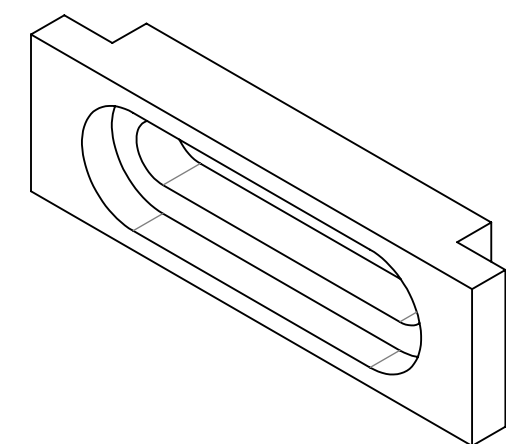
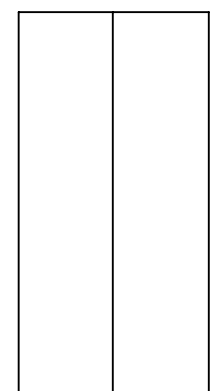
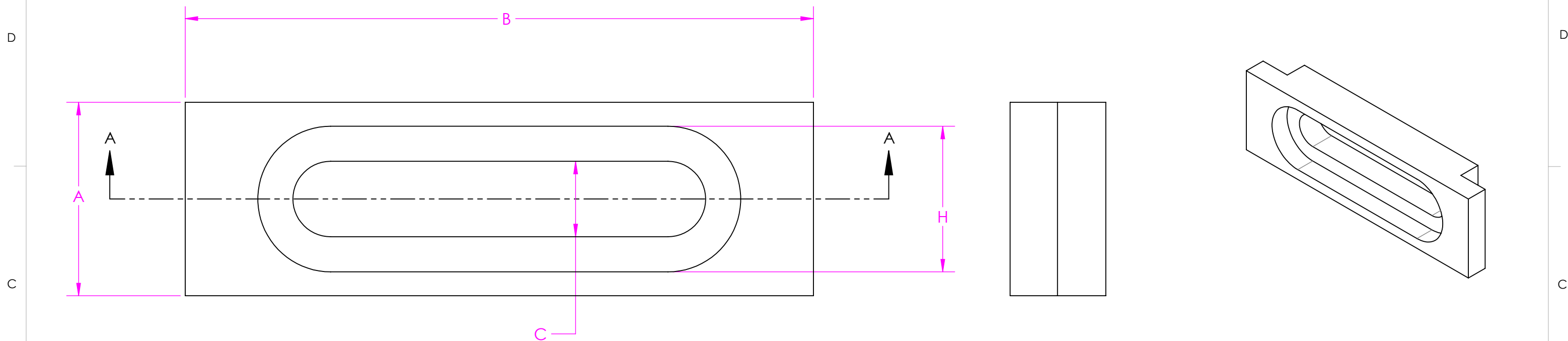
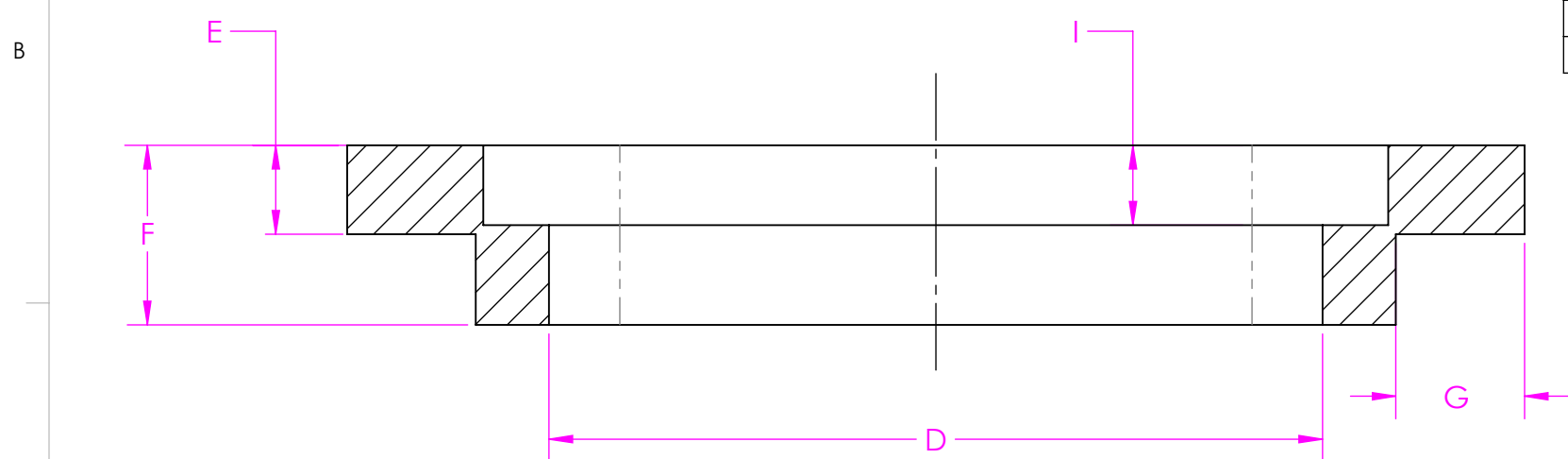


NOTES:
1. BREAK ALL SHARP EDGES

REVISION HISTORY			
REV	BY	DESCRIPTION	DATE
A	SAS	INITIAL RELEASE	2/26/2021
B	SAS	ADDED PARTS IN TABLE	3/11/2021



Part Number	A	B	C	D	E	F	G	H	I
59946090	1.000	3.250	0.390	2.135	0.245	0.495	0.355	0.753	0.220
59931900	0.750	3.000	0.350	2.250	0.260	0.437	0.370	N/A	N/A
59932200	1.150	3.750	0.350	3.250	0.100	0.500	0.250	0.920	0.320
59932100	1.250	3.750	0.310	3.250	0.120	0.500	0.250	0.875	0.320



SECTION A-A

<p>UNLESS OTHERWISE SPECIFIED: DIMENSIONS ARE IN INCHES .XX ± 0.015 ANGLES ± 2.0° .XXX ± 0.005 FRACTIONS ± 1/64 .XXXX ± 0.0005</p> <p>BREAK SHARP EDGES 0.015" MAX MACHINE INSIDE CORNER RADIUS 0.015" MAX</p> <p>ALL Øs ON SAME AXIS TO BE M WITHIN 0.003" M SURFACES TO BE \perp OR \parallel WITHIN 0.001" M CHAMFER FIRST THREAD 45° ALL SURFACES 32</p>		<p>CHECKED BY</p> <p>CHECKED DATE</p>	<p>Freeman Mfg and Supply 1101 Moore Road Avon, OH 44011</p>
<p>THE INFORMATION CONTAINED IN THIS DRAWING IS THE SOLE PROPERTY OF COMPANY NAME. ANY REPRODUCTION IN PART OR AS A WHOLE WITHOUT THE WRITTEN PERMISSION OF COMPANY NAME IS PROHIBITED.</p>		<p>TITLE: Rectangular Tooling Washer</p>	
<p>MATERIAL AS SPECIFIED</p>	<p>FINISH</p>	<p>SIZE B</p> <p>PART NO. Washer, Machined</p> <p>SCALE: 2:1</p>	<p>REV B</p> <p>SHEET 1 OF 1</p>

Freeman 360° Account
 Become a member!

Distributed By
 Freeman Manufacturing & Supply Co.
 www.freemansupply.com 800-321-8511 **FREEMAN**

GENERAL NOTE: IF PART IS NOT FULLY-DEFINED, DEFER TO 3-D CAD DATA. ASSUME ALL FEATURES ARE ±0.005 TO NOMINAL SIZE UNLESS SPECIFIED DIFFERENTLY HERE.