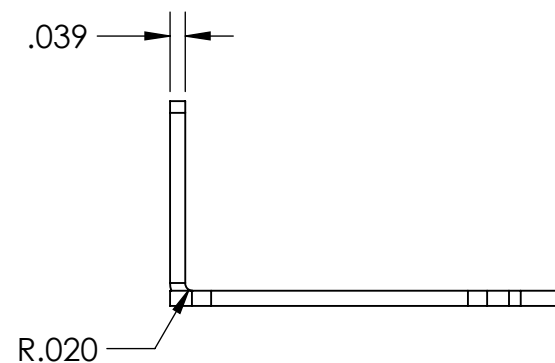
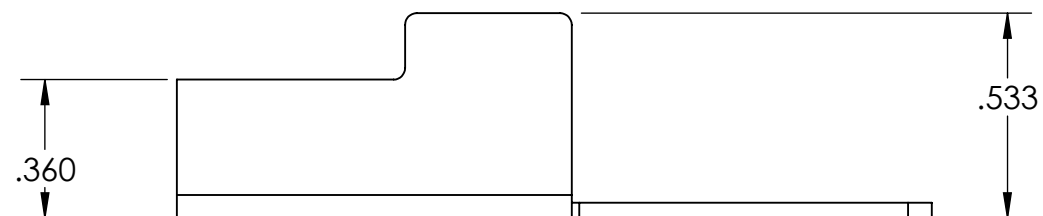
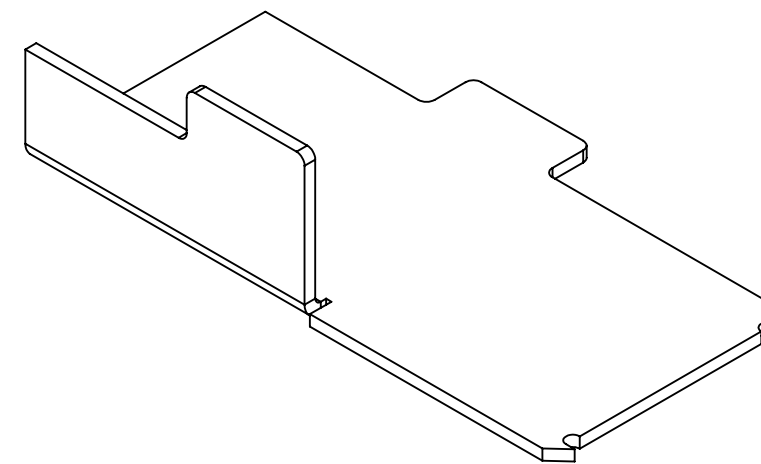
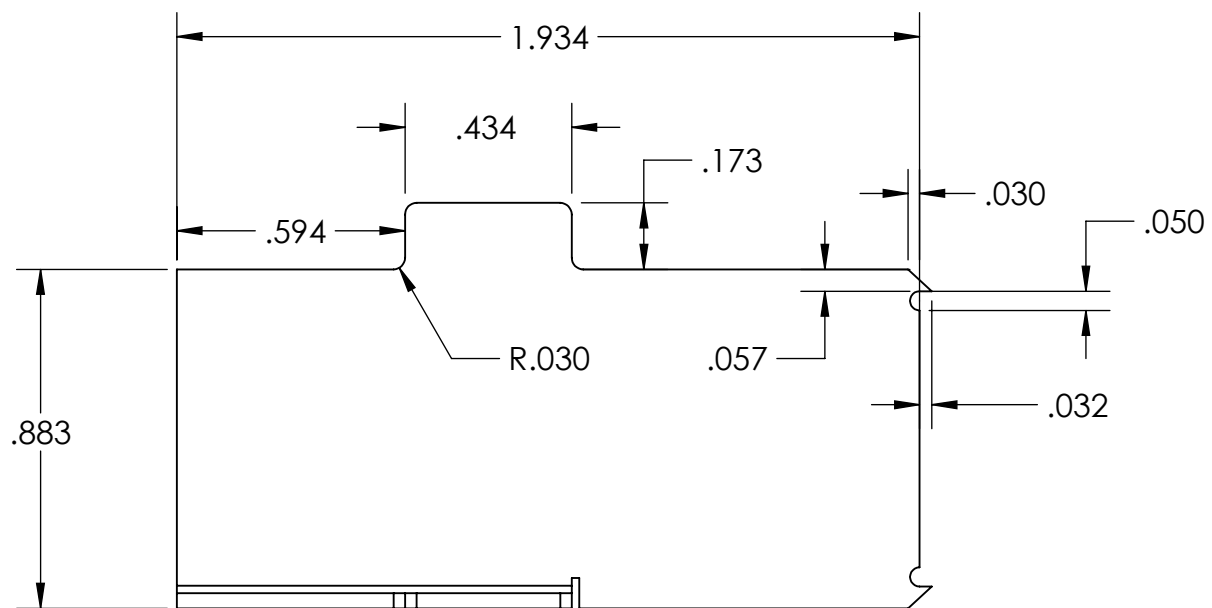


NOTES:
1. BREAK ALL SHARP EDGES

REVISION HISTORY			
REV	BY	DESCRIPTION	DATE



GENERAL NOTE: IF PART IS NOT FULLY-DEFINED, DEFER TO 3-D CAD DATA. ASSUME ALL FEATURES ARE ± 0.005 TO NOMINAL SIZE UNLESS SPECIFIED DIFFERENTLY HERE.

UNLESS OTHERWISE SPECIFIED: DIMENSIONS ARE IN INCHES .XX ± 0.015 ANGLES $\pm 2.0^\circ$.XXX ± 0.005 FRACTIONS $\pm 1/64$.XXXX ± 0.0005 BREAK SHARP EDGES 0.015" MAX MACHINE INSIDE CORNER RADIUS 0.015" MAX ALL ϕ s ON SAME AXIS TO BE \odot WITHIN 0.003" SURFACES TO BE \perp OR \parallel WITHIN 0.001" CHAMFER FIRST THREAD 45° ALL SURFACES $\sqrt{32}$		CHECKED BY	Freeman Mfg and Supply 1101 Moore Road Avon, OH 44011	
		CHECKED DATE	TITLE: Stripping Plate	
		PROPRIETARY AND CONFIDENTIAL THE INFORMATION CONTAINED IN THIS DRAWING IS THE SOLE PROPERTY OF COMPANY NAME. ANY REPRODUCTION IN PART OR AS A WHOLE WITHOUT THE WRITTEN PERMISSION OF COMPANY NAME IS PROHIBITED.		REV
MATERIAL 1020 CRS SHEET	FINISH	SIZE B	PART NO. FM-SP	
		SCALE: 2:1	SHEET 1 OF 1	

8 7 6 5 4 3 2 1

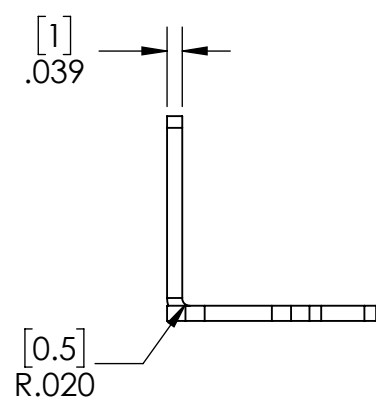
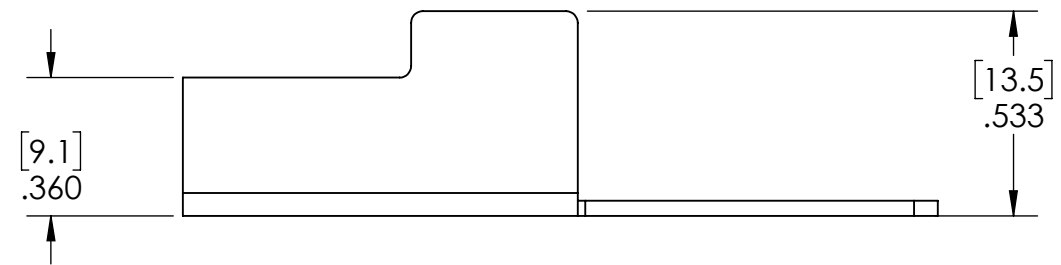
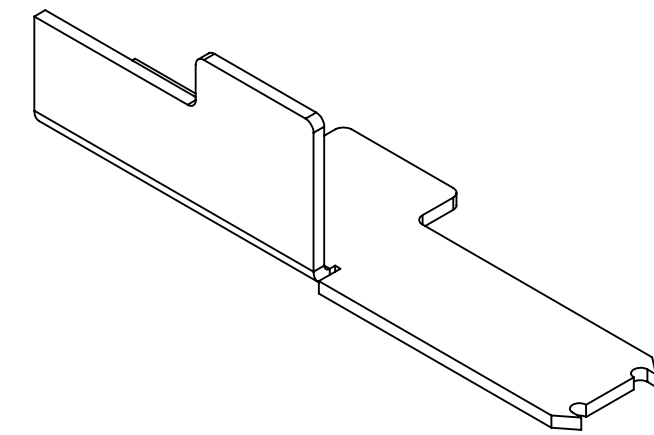
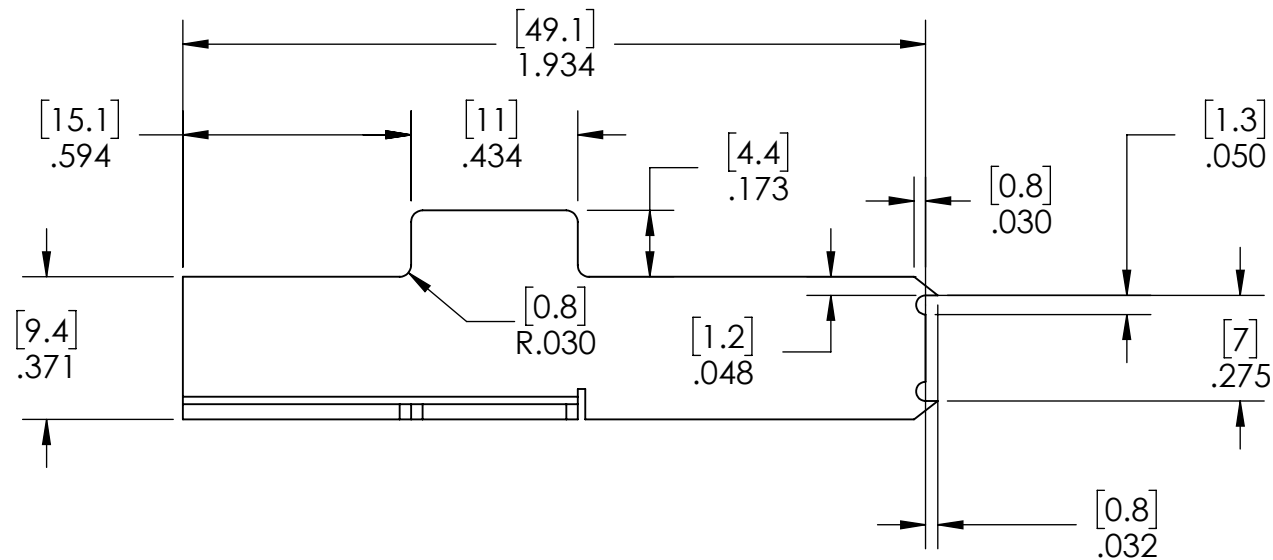
D
C
B
A

D
C
B
A

8 7 6 5 4 3 2 1

NOTES:
1. BREAK ALL SHARP EDGES

REVISION HISTORY			
REV	BY	DESCRIPTION	DATE



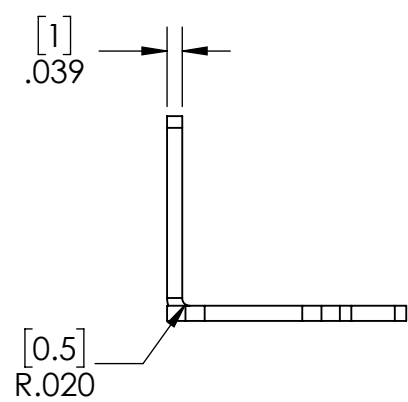
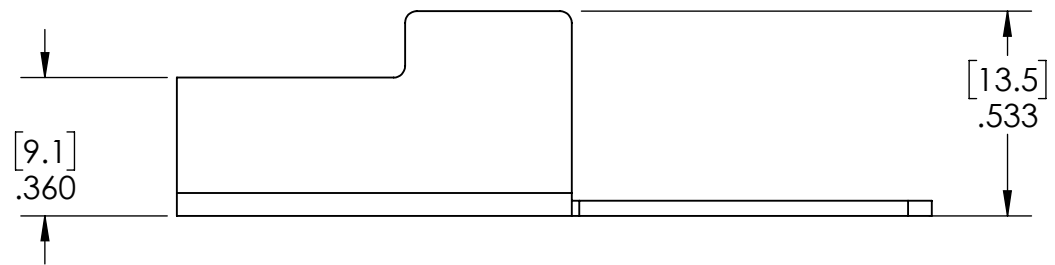
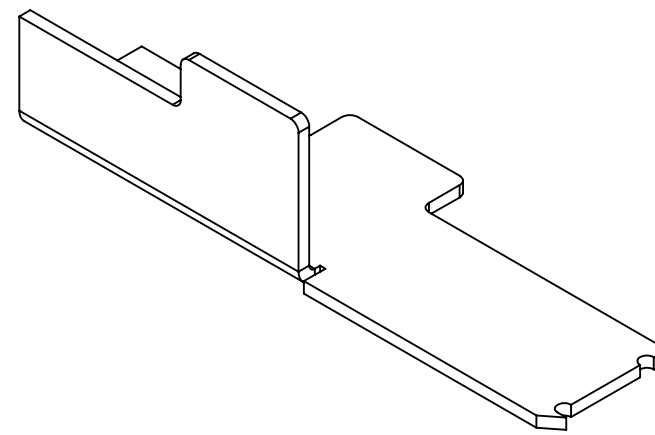
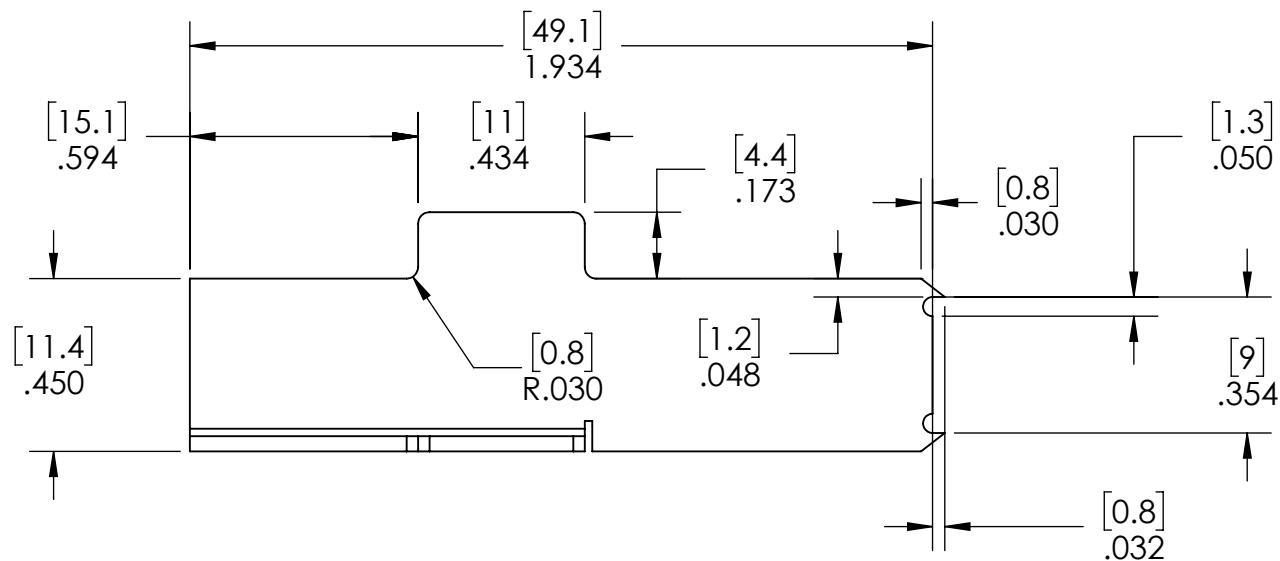
Part Number	Configuration
59971101	Left
59971201	Right

UNLESS OTHERWISE SPECIFIED: DIMENSIONS ARE IN INCHES .XX ± 0.015 ANGLES ± 2.0° .XXX ± 0.005 FRACTIONS ± 1/64 .XXXX ± 0.0005 BREAK SHARP EDGES 0.015" MAX MACHINE INSIDE CORNER RADIUS 0.015" MAX ALL Øs ON SAME AXIS TO BE ◎ WITHIN 0.003" ✓ SURFACES TO BE ⊥ OR // WITHIN 0.001" ✓ CHAMFER FIRST THREAD 45° ALL SURFACES 32/ ✓		CHECKED BY	Freeman Mfg and Supply 1101 Moore Road Avon, OH 44011	
	CHECKED DATE	TITLE: 7mm Stripping Plate		
PROPRIETARY AND CONFIDENTIAL THE INFORMATION CONTAINED IN THIS DRAWING IS THE SOLE PROPERTY OF FREEMAN MFG. ANY REPRODUCTION IN PART OR AS A WHOLE WITHOUT THE WRITTEN PERMISSION OF FREEMAN MFG IS PROHIBITED.		SIZE B	PART NO. SPL02	REV
MATERIAL 1020 CRS SHEET		SCALE: 2:1		SHEET 1 OF 1
FINISH				

GENERAL NOTE: IF PART IS NOT FULLY-DEFINED, DEFER TO 3-D CAD DATA. ASSUME ALL FEATURES ARE ±0.005 TO NOMINAL SIZE UNLESS SPECIFIED DIFFERENTLY HERE.

NOTES:
1. BREAK ALL SHARP EDGES

REVISION HISTORY			
REV	BY	DESCRIPTION	DATE



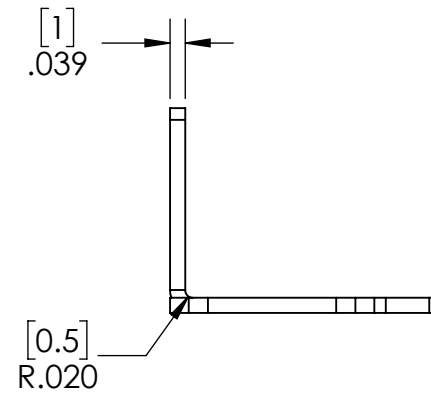
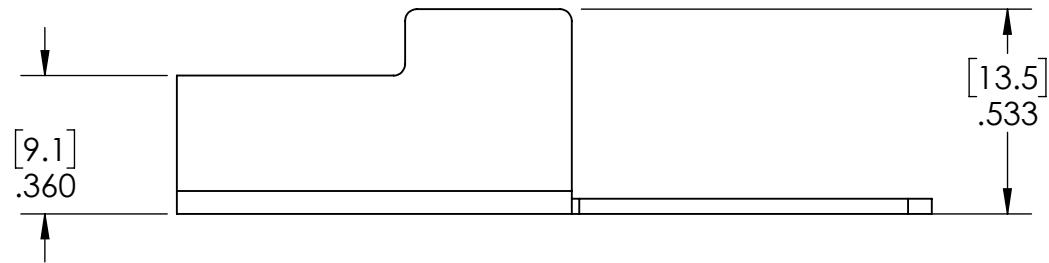
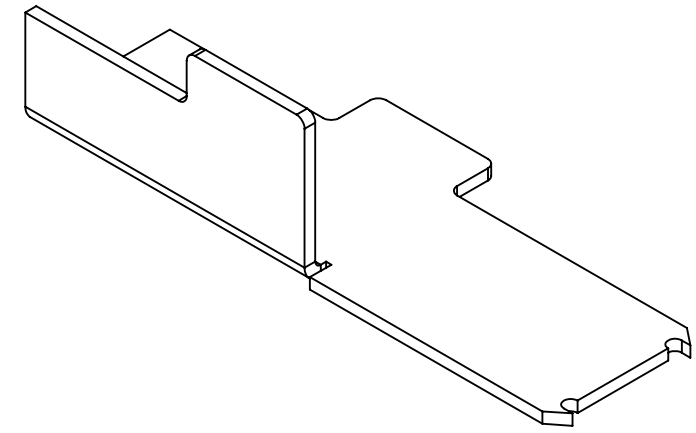
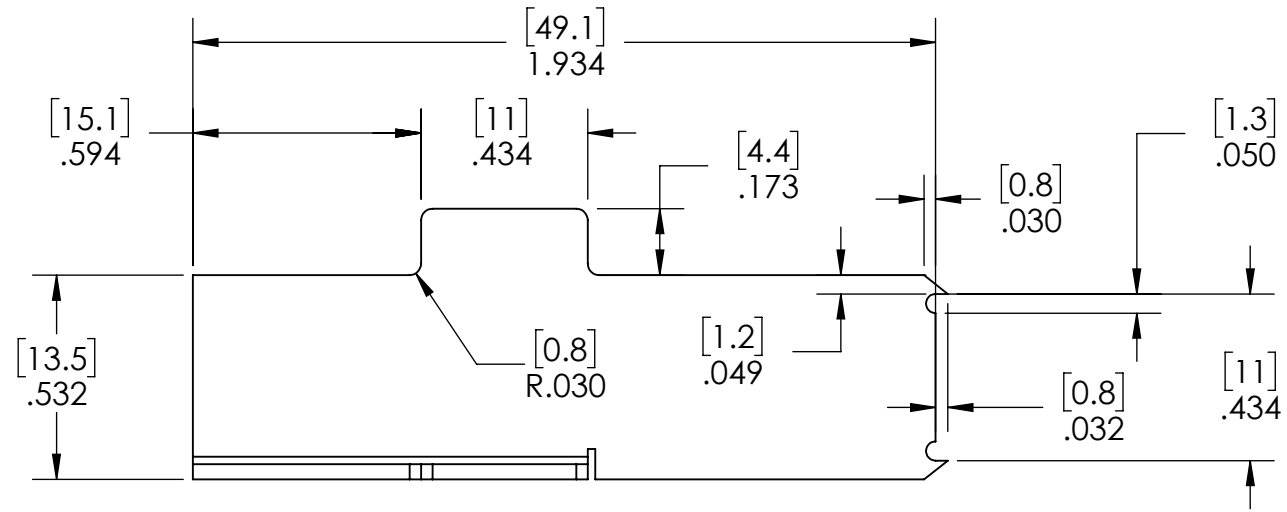
Part Number	Configuration
59971301	Left
59971401	Right

UNLESS OTHERWISE SPECIFIED: DIMENSIONS ARE IN INCHES .XX ± 0.015 ANGLES ± 2.0° .XXX ± 0.005 FRACTIONS ± 1/64 .XXXX ± 0.0005 BREAK SHARP EDGES 0.015" MAX MACHINE INSIDE CORNER RADIUS 0.015" MAX ALL Øs ON SAME AXIS TO BE ◎ WITHIN 0.003" ↗ SURFACES TO BE ⊥ OR // WITHIN 0.001" ↗ CHAMFER FIRST THREAD 45° ALL SURFACES 32/√		CHECKED BY	Freeman Mfg and Supply 1101 Moore Road Avon, OH 44011	
		CHECKED DATE	TITLE: 9mm Stripping Plate	
		PROPRIETARY AND CONFIDENTIAL THE INFORMATION CONTAINED IN THIS DRAWING IS THE SOLE PROPERTY OF FREEMAN MFG. ANY REPRODUCTION IN PART OR AS A WHOLE WITHOUT THE WRITTEN PERMISSION OF FREEMAN MFG IS PROHIBITED.		REV
		MATERIAL 1020 CRS SHEET	SIZE B	PART NO. SPL03
		FINISH	SCALE: 2:1	SHEET 1 OF 1

GENERAL NOTE: IF PART IS NOT FULLY-DEFINED, DEFER TO 3-D CAD DATA. ASSUME ALL FEATURES ARE ±0.005 TO NOMINAL SIZE UNLESS SPECIFIED DIFFERENTLY HERE.

NOTES:
1. BREAK ALL SHARP EDGES

REVISION HISTORY			
REV	BY	DESCRIPTION	DATE



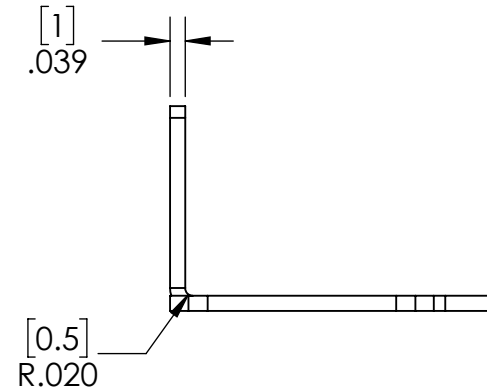
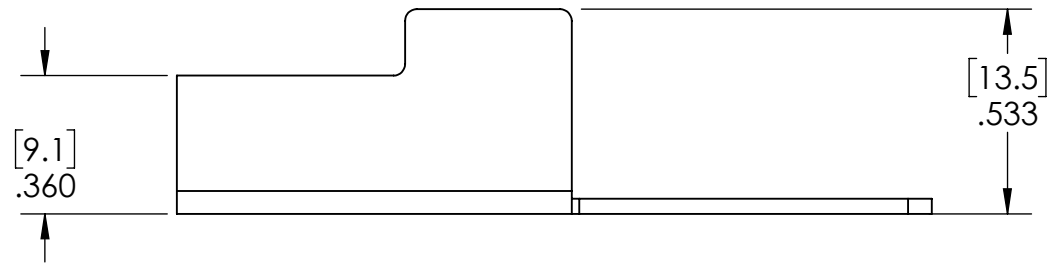
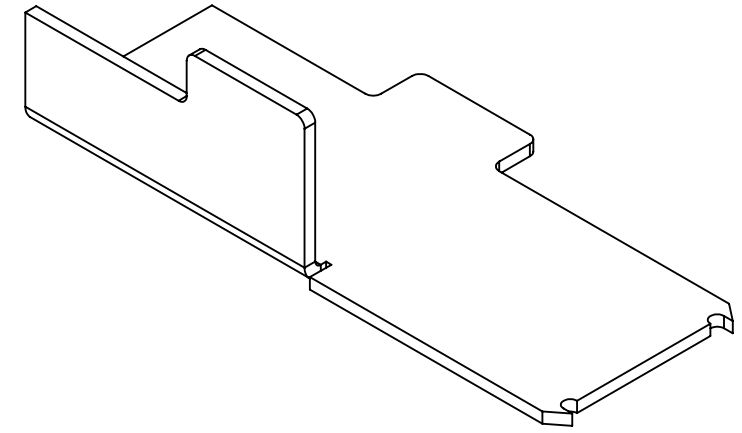
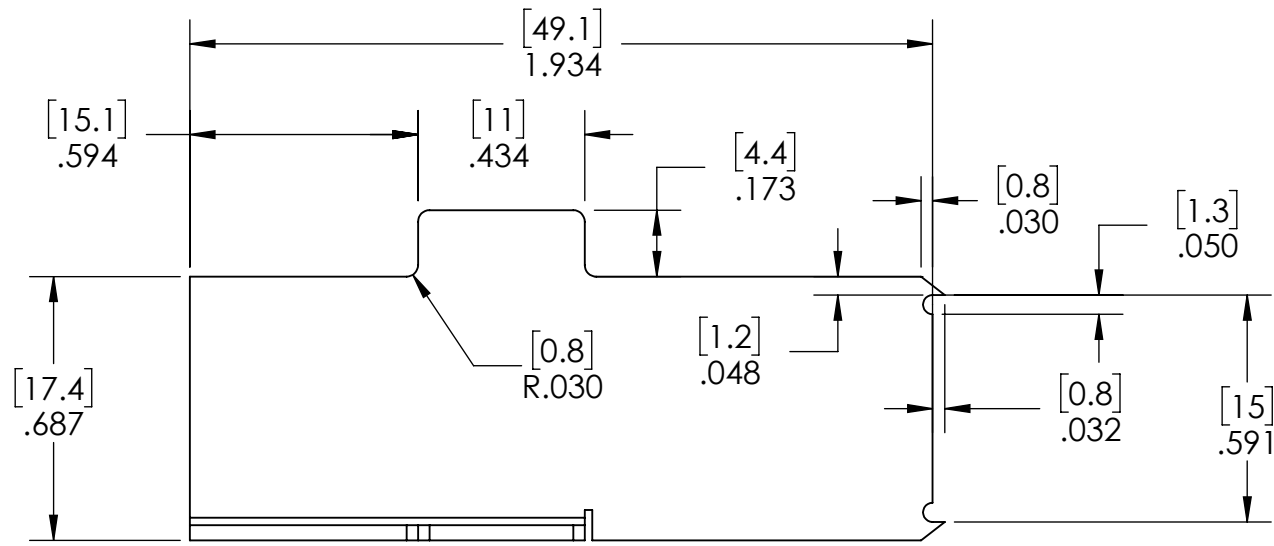
Part Number	Configuration
59971601	Left
59971701	Right

UNLESS OTHERWISE SPECIFIED: DIMENSIONS ARE IN INCHES .XX ± 0.015 ANGLES ± 2.0° .XXX ± 0.005 FRACTIONS ± 1/64 .XXXX ± 0.0005 BREAK SHARP EDGES 0.015" MAX MACHINE INSIDE CORNER RADIUS 0.015" MAX ALL Øs ON SAME AXIS TO BE ◎ WITHIN 0.003" // SURFACES TO BE ⊥ OR // WITHIN 0.001" // CHAMFER FIRST THREAD 45° ALL SURFACES 32/		CHECKED BY	Freeman Mfg and Supply 1101 Moore Road Avon, OH 44011	
		CHECKED DATE	TITLE: 1 mm Stripping Plate	
		PROPRIETARY AND CONFIDENTIAL THE INFORMATION CONTAINED IN THIS DRAWING IS THE SOLE PROPERTY OF FREEMAN MFG. ANY REPRODUCTION IN PART OR AS A WHOLE WITHOUT THE WRITTEN PERMISSION OF FREEMAN MFG IS PROHIBITED.		REV
		MATERIAL 1020 CRS SHEET	SCALE: 2:1	SHEET 1 OF 1
		FINISH	SIZE B	PART NO. SPL04

GENERAL NOTE: IF PART IS NOT FULLY-DEFINED, DEFER TO 3-D CAD DATA. ASSUME ALL FEATURES ARE ±0.005 TO NOMINAL SIZE UNLESS SPECIFIED DIFFERENTLY HERE.

NOTES:
1. BREAK ALL SHARP EDGES

REVISION HISTORY			
REV	BY	DESCRIPTION	DATE



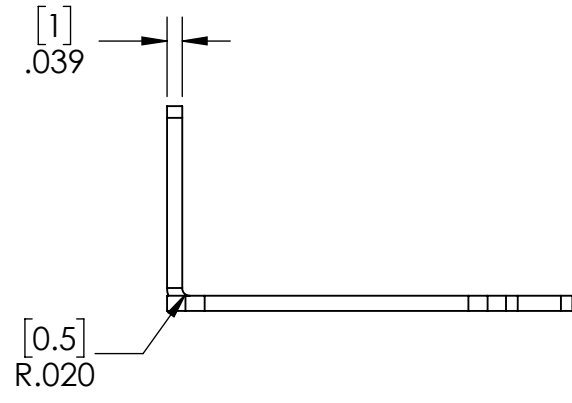
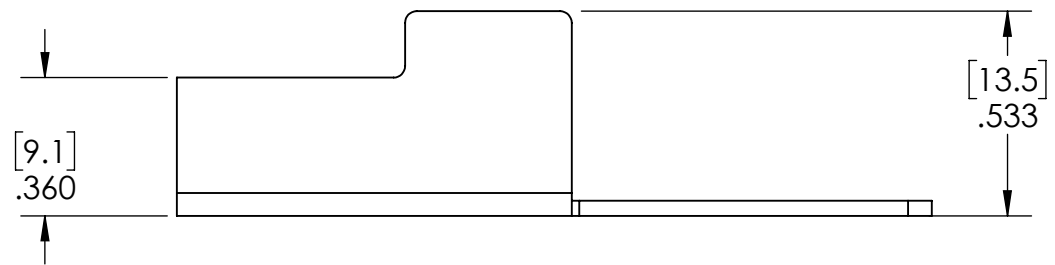
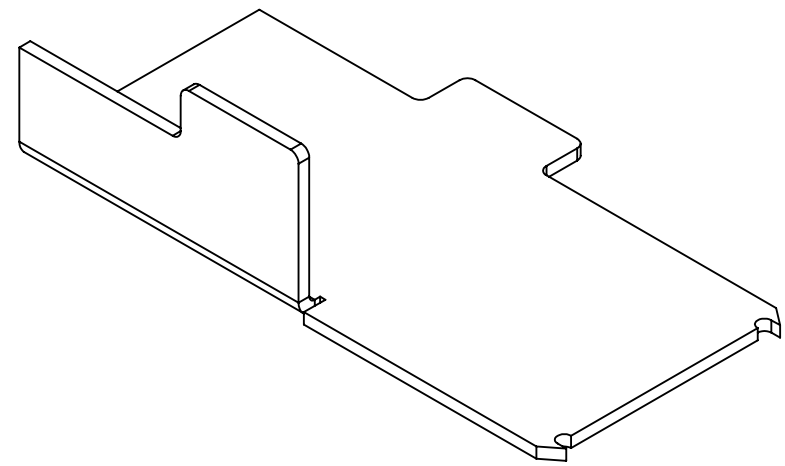
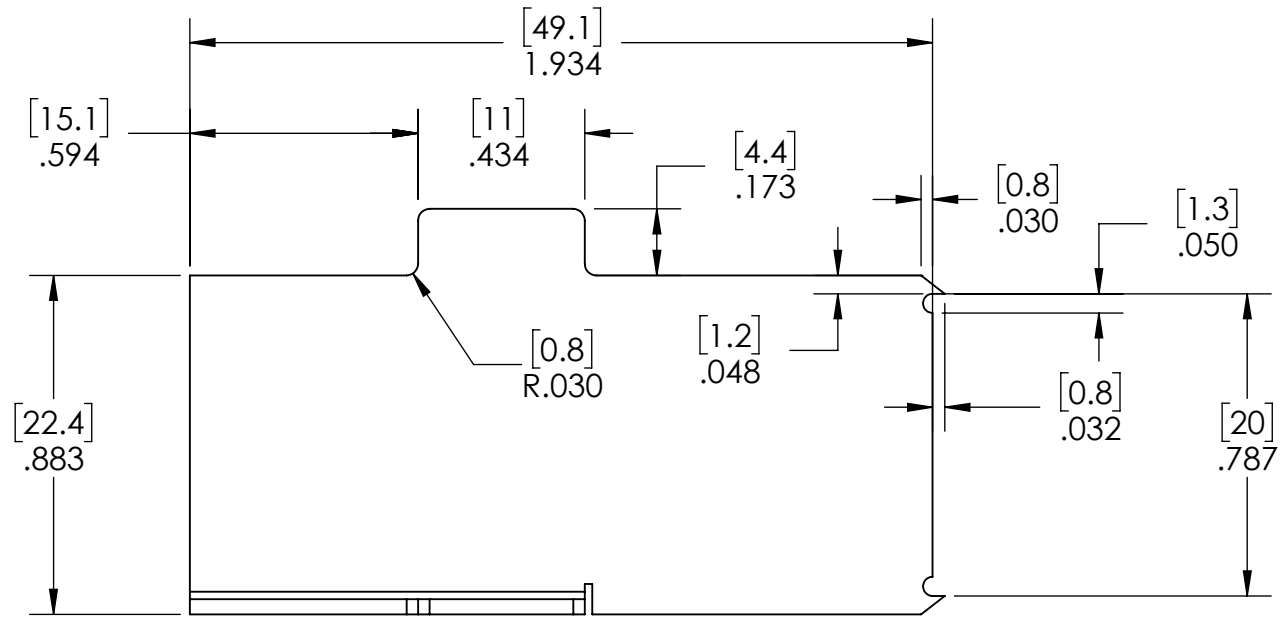
Part Number	Configuration
59971901	Left
59972001	Right

UNLESS OTHERWISE SPECIFIED: DIMENSIONS ARE IN INCHES .XX ± 0.015 ANGLES ± 2.0° .XXX ± 0.005 FRACTIONS ± 1/64 .XXXX ± 0.0005 BREAK SHARP EDGES 0.015" MAX MACHINE INSIDE CORNER RADIUS 0.015" MAX ALL Øs ON SAME AXIS TO BE ◎ WITHIN 0.003" ↗ SURFACES TO BE ⊥ OR // WITHIN 0.001" ↗ CHAMFER FIRST THREAD 45° ALL SURFACES 32/√		CHECKED BY	Freeman Mfg and Supply 1101 Moore Road Avon, OH 44011	
		CHECKED DATE	TITLE: 15mm Stripping Plate	
		PROPRIETARY AND CONFIDENTIAL THE INFORMATION CONTAINED IN THIS DRAWING IS THE SOLE PROPERTY OF FREEMAN MFG. ANY REPRODUCTION IN PART OR AS A WHOLE WITHOUT THE WRITTEN PERMISSION OF FREEMAN MFG IS PROHIBITED.		REV
		MATERIAL 1020 CRS SHEET	SIZE B	PART NO. SPL05
		FINISH	SCALE: 2:1	SHEET 1 OF 1

GENERAL NOTE: IF PART IS NOT FULLY-DEFINED, DEFER TO 3-D CAD DATA. ASSUME ALL FEATURES ARE ±0.005 TO NOMINAL SIZE UNLESS SPECIFIED DIFFERENTLY HERE.

NOTES:
1. BREAK ALL SHARP EDGES

REVISION HISTORY			
REV	BY	DESCRIPTION	DATE



Part Number	Configuration
59972101	Left
59972201	Right

UNLESS OTHERWISE SPECIFIED:

DIMENSIONS ARE IN INCHES
 .XX ± 0.015 ANGLES ± 2.0°
 .XXX ± 0.005 FRACTIONS ± 1/64
 .XXXX ± 0.0005

BREAK SHARP EDGES 0.015" MAX
 MACHINE INSIDE CORNER RADIUS 0.015" MAX

ALL ϕ s ON SAME AXIS TO BE \odot WITHIN 0.003" \neq
 SURFACES TO BE \perp OR \parallel WITHIN 0.001" \neq
 CHAMFER FIRST THREAD 45°
 ALL SURFACES $\sqrt{32}$

CHECKED BY: _____
 CHECKED DATE: _____

PROPRIETARY AND CONFIDENTIAL
 THE INFORMATION CONTAINED IN THIS DRAWING IS THE SOLE PROPERTY OF FREEMAN MFG. ANY REPRODUCTION IN PART OR AS A WHOLE WITHOUT THE WRITTEN PERMISSION OF FREEMAN MFG IS PROHIBITED.

MATERIAL: 1020 CRS SHEET
 FINISH: _____

Freeman Mfg and Supply
 1101 Moore Road
 Avon, OH 44011

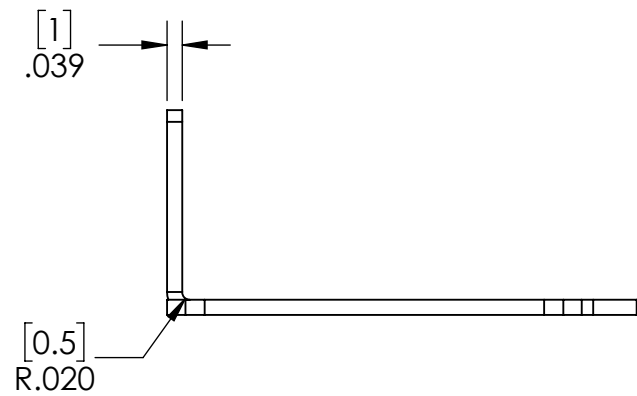
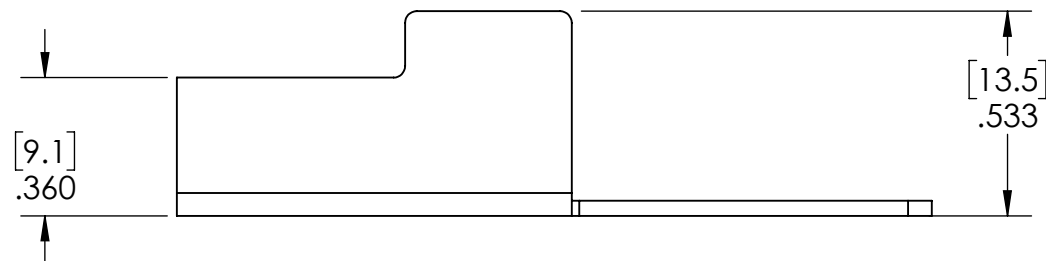
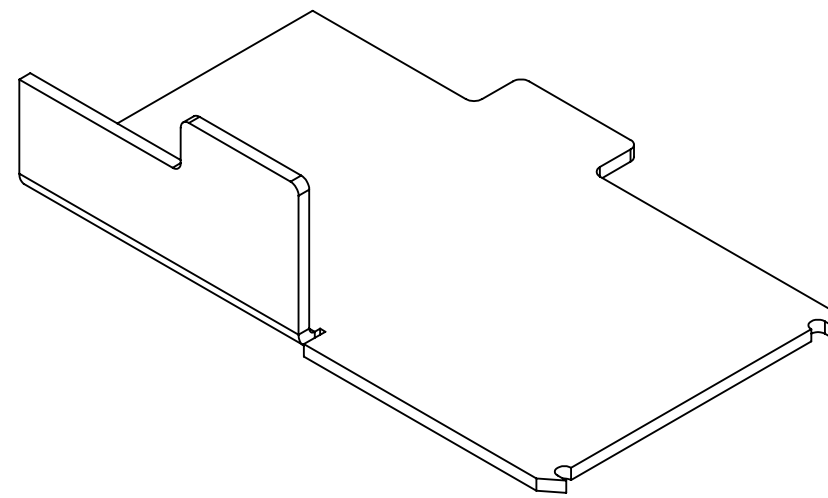
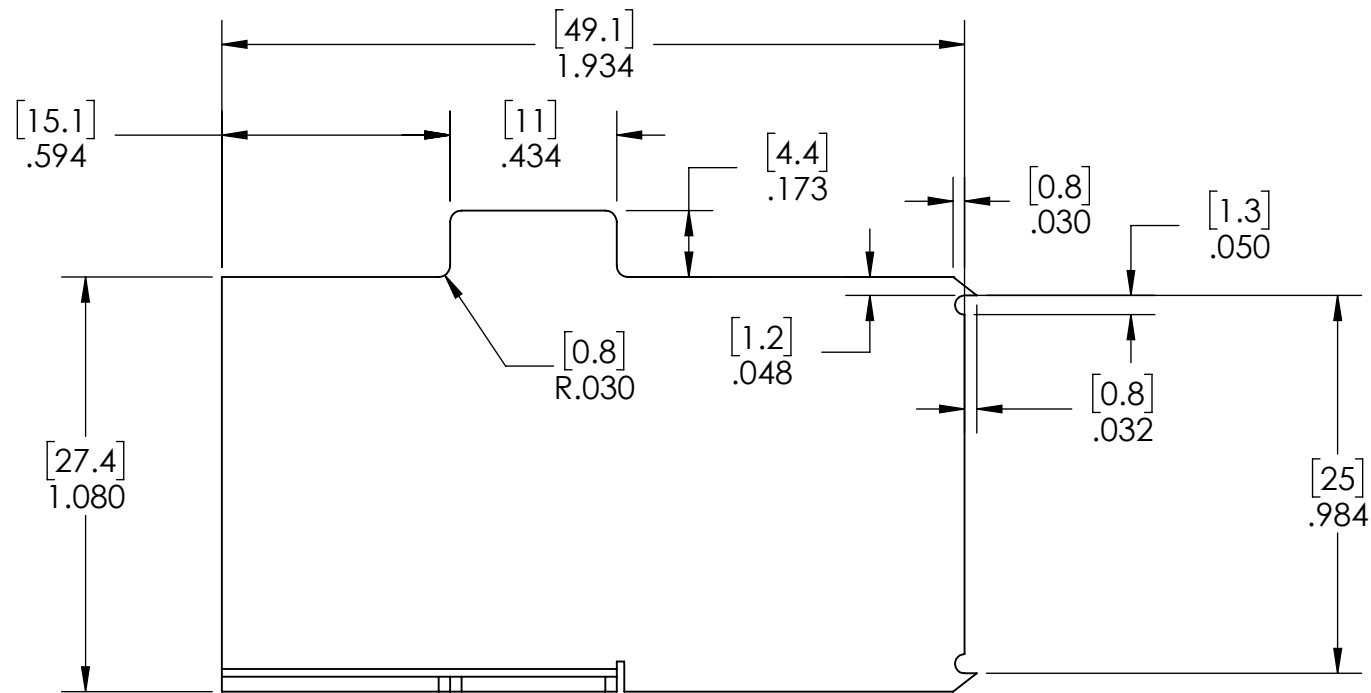
TITLE: 20mm Stripping Plate

SIZE B	PART NO. SPL06	REV
SCALE: 2:1		SHEET 1 OF 1

GENERAL NOTE: IF PART IS NOT FULLY-DEFINED, DEFER TO 3-D CAD DATA. ASSUME ALL FEATURES ARE ±0.005 TO NOMINAL SIZE UNLESS SPECIFIED DIFFERENTLY HERE.

NOTES:
1. BREAK ALL SHARP EDGES

REVISION HISTORY			
REV	BY	DESCRIPTION	DATE



Part Number	Configuration
59972301	Left
59972401	Right

UNLESS OTHERWISE SPECIFIED: DIMENSIONS ARE IN INCHES .XX ± 0.015 ANGLES ± 2.0° .XXX ± 0.005 FRACTIONS ± 1/64 .XXXX ± 0.0005 BREAK SHARP EDGES 0.015" MAX MACHINE INSIDE CORNER RADIUS 0.015" MAX ALL Øs ON SAME AXIS TO BE ◎ WITHIN 0.003" ↗ SURFACES TO BE ⊥ OR // WITHIN 0.001" ↗ CHAMFER FIRST THREAD 45° ALL SURFACES 32/√		CHECKED BY	Freeman Mfg and Supply 1101 Moore Road Avon, OH 44011	
	CHECKED DATE	TITLE: 25mm Stripping Plate		
PROPRIETARY AND CONFIDENTIAL THE INFORMATION CONTAINED IN THIS DRAWING IS THE SOLE PROPERTY OF FREEMAN MFG. ANY REPRODUCTION IN PART OR AS A WHOLE WITHOUT THE WRITTEN PERMISSION OF FREEMAN MFG IS PROHIBITED.		SIZE B	PART NO. SPL07	REV
MATERIAL 1020 CRS SHEET		SCALE: 2:1	SHEET 1 OF 1	
FINISH				

GENERAL NOTE: IF PART IS NOT FULLY-DEFINED, DEFER TO 3-D CAD DATA. ASSUME ALL FEATURES ARE ±0.005 TO NOMINAL SIZE UNLESS SPECIFIED DIFFERENTLY HERE.