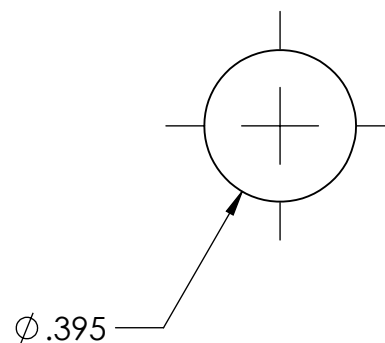
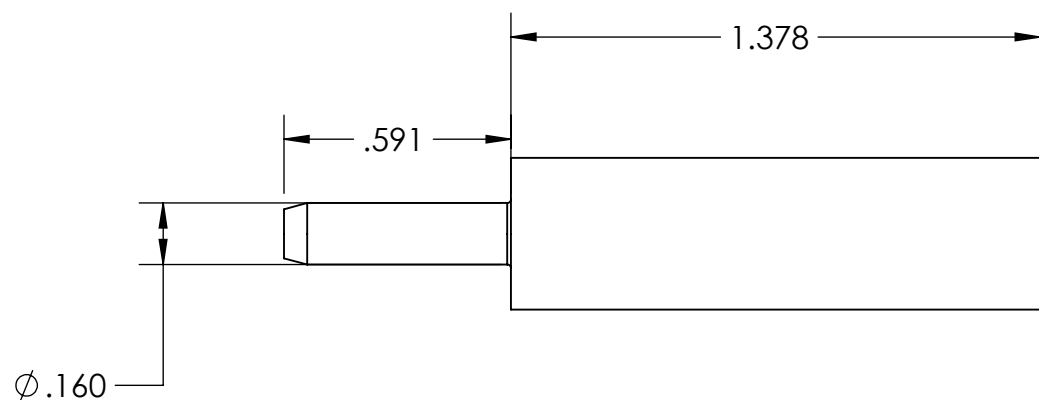
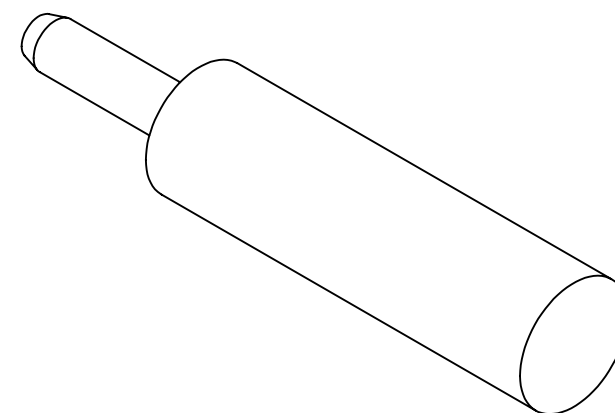
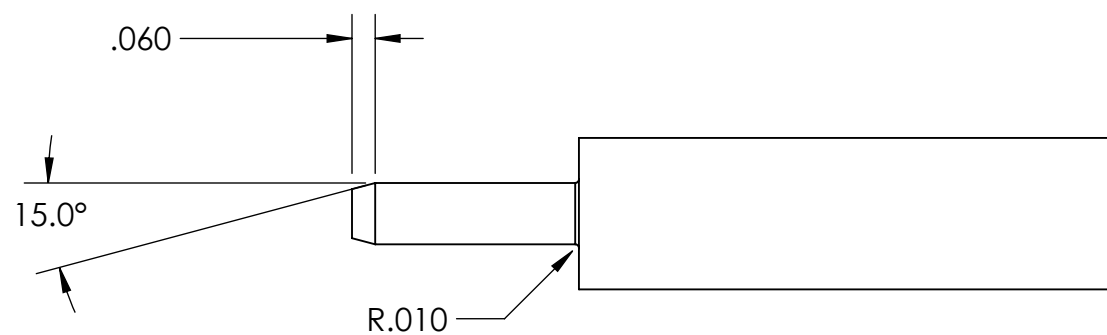


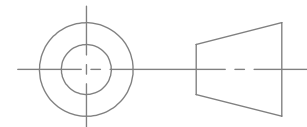
NOTES:  
1. BREAK ALL SHARP EDGES

REVISION HISTORY			
REV	BY	DESCRIPTION	DATE



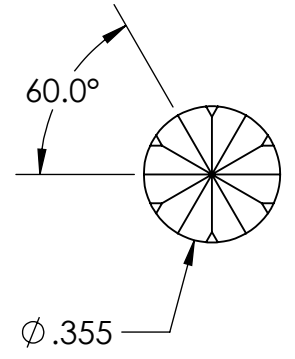
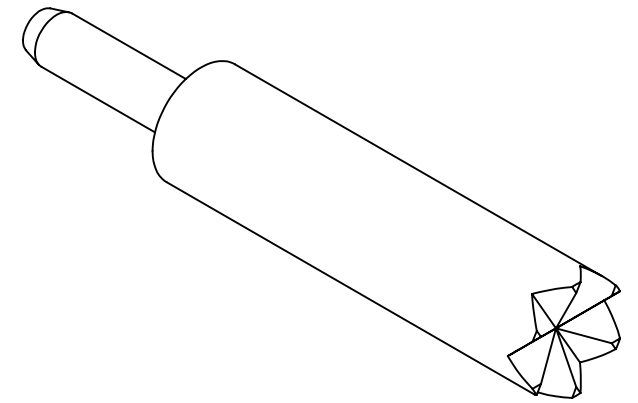
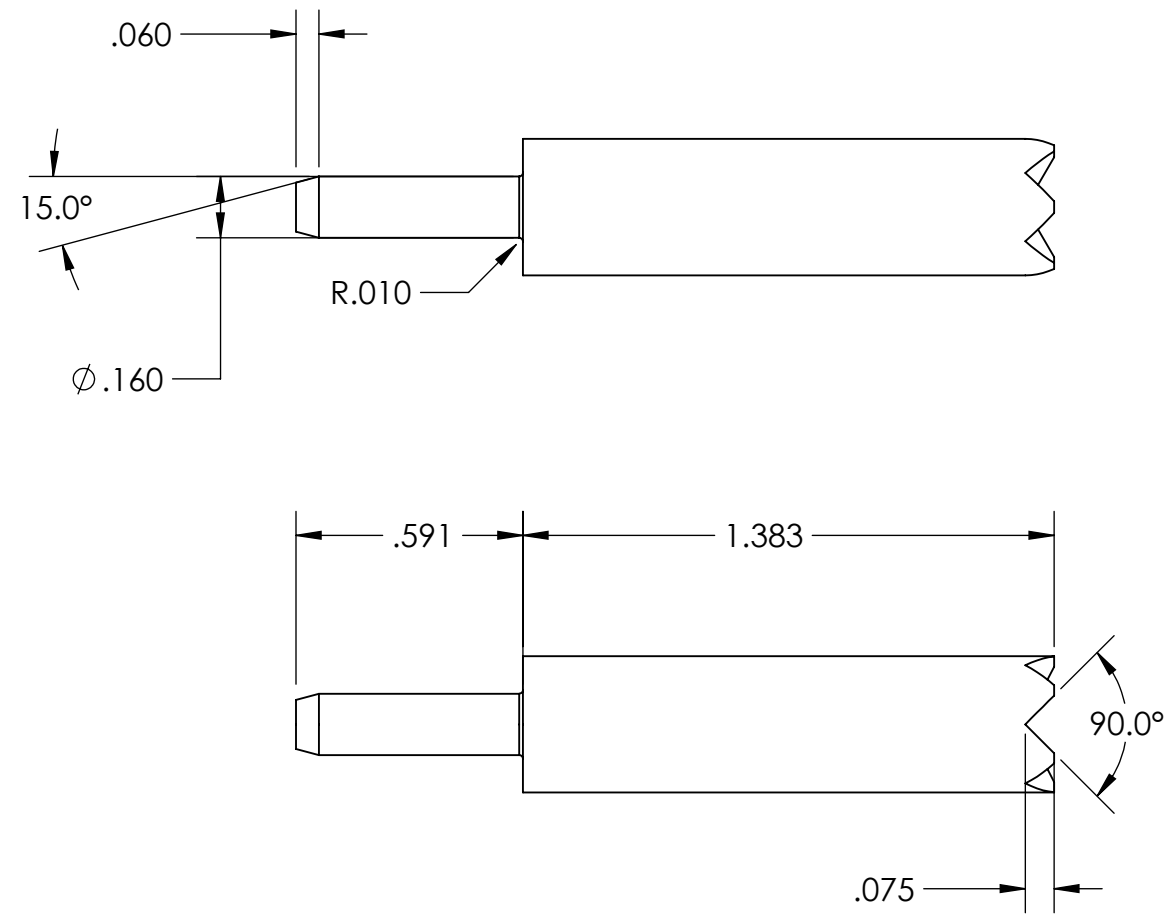
GENERAL NOTE: IF PART IS NOT FULLY-DEFINED, DEFER TO 3-D CAD DATA. ASSUME ALL FEATURES ARE ±0.005 TO NOMINAL SIZE UNLESS SPECIFIED DIFFERENTLY HERE.

UNLESS OTHERWISE SPECIFIED: DIMENSIONS ARE IN INCHES .XX ± 0.015 ANGLES ± 2.0° .XXX ± 0.005 FRACTIONS ± 1/64 .XXXX ± 0.0005 BREAK SHARP EDGES 0.015" MAX MACHINE INSIDE CORNER RADIUS 0.015" MAX ALL Øs ON SAME AXIS TO BE ◎ WITHIN 0.003" SURFACES TO BE ⊥ OR // WITHIN 0.001" CHAMFER FIRST THREAD 45° ALL SURFACES  32/		CHECKED BY	Freeman Mfg and Supply 1101 Moore Road Avon, OH 44011	
		CHECKED DATE	TITLE: Stripping Pin, Crown	
		<b>PROPRIETARY AND CONFIDENTIAL</b> THE INFORMATION CONTAINED IN THIS DRAWING IS THE SOLE PROPERTY OF COMPANY NAME. ANY REPRODUCTION IN PART OR AS A WHOLE WITHOUT THE WRITTEN PERMISSION OF COMPANY NAME IS PROHIBITED.		SIZE <b>B</b>
		MATERIAL 1020 CRS	PART NO. <b>FM-SPF</b>	REV
		FINISH	SCALE: 2:1	SHEET 1 OF 1



NOTES:  
1. BREAK ALL SHARP EDGES

REVISION HISTORY			
REV	BY	DESCRIPTION	DATE



GENERAL NOTE: IF PART IS NOT FULLY-DEFINED, DEFER TO 3-D CAD DATA. ASSUME ALL FEATURES ARE  $\pm 0.005$  TO NOMINAL SIZE UNLESS SPECIFIED DIFFERENTLY HERE.

UNLESS OTHERWISE SPECIFIED: DIMENSIONS ARE IN INCHES .XX $\pm 0.015$ ANGLES $\pm 2.0^\circ$ .XXX $\pm 0.005$ FRACTIONS $\pm 1/64$ .XXXX $\pm 0.0005$ BREAK SHARP EDGES 0.015" MAX MACHINE INSIDE CORNER RADIUS 0.015" MAX ALL $\phi$ s ON SAME AXIS TO BE $\textcircled{C}$ WITHIN 0.003" SURFACES TO BE $\perp$ OR $\parallel$ WITHIN 0.001" CHAMFER FIRST THREAD $45^\circ$ ALL SURFACES $32/\sqrt{\quad}$		CHECKED BY	Freeman Mfg and Supply 1101 Moore Road Avon, OH 44011	
		CHECKED DATE	TITLE: Stripping Pin, Crown	
		<b>PROPRIETARY AND CONFIDENTIAL</b> THE INFORMATION CONTAINED IN THIS DRAWING IS THE SOLE PROPERTY OF COMPANY NAME. ANY REPRODUCTION IN PART OR AS A WHOLE WITHOUT THE WRITTEN PERMISSION OF COMPANY NAME IS PROHIBITED.		REV
		MATERIAL 1020 CRS	SIZE <b>B</b>	PART NO. <b>FM-SPC</b>
		FINISH	SCALE: 2:1	SHEET 1 OF 1

8 7 6 5 4 3 2 1

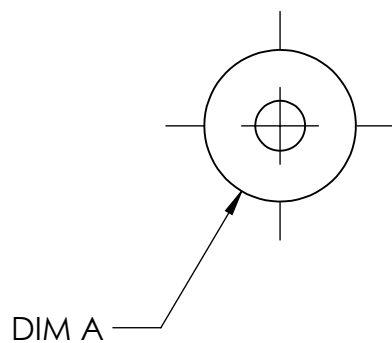
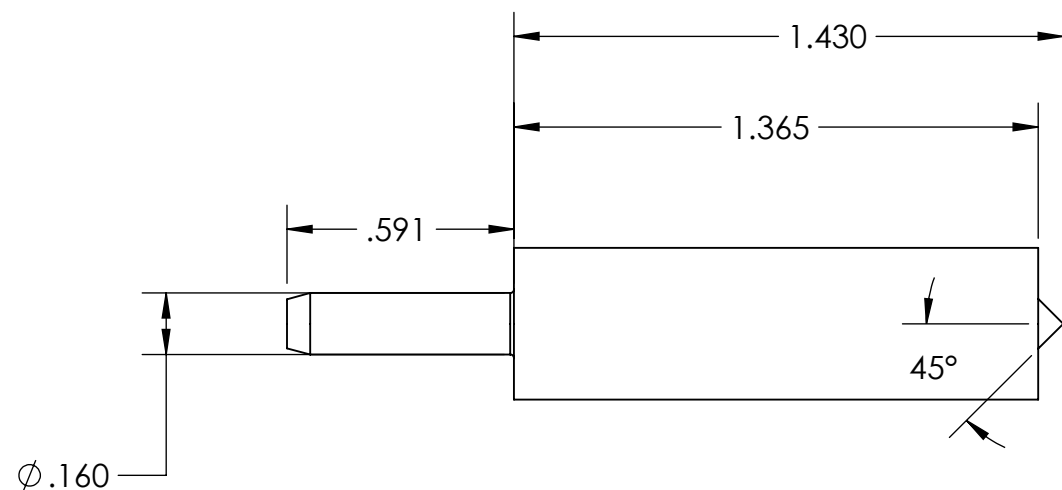
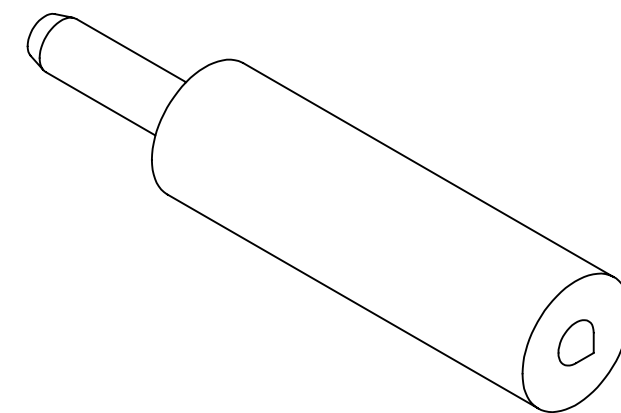
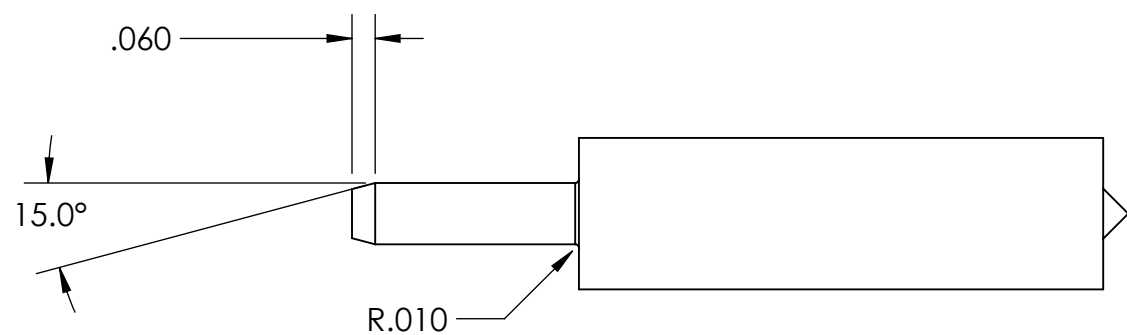
D  
C  
B  
A

D  
C  
B  
A

8 7 6 5 4 3 2 1

NOTES:  
1. BREAK ALL SHARP EDGES

REVISION HISTORY			
REV	BY	DESCRIPTION	DATE



Part Number	Size	Dim 'A'
59967701	2mm	0.079
59968101	3mm	0.118
59968501	4mm	0.157
59968801	5mm	0.197
59969101	6mm	0.236
59969401	7mm	0.276
59969701	8mm	0.315
59970001	9mm	0.354
59970301	10mm	0.394

GENERAL NOTE: IF PART IS NOT FULLY-DEFINED, DEFER TO 3-D CAD DATA. ASSUME ALL FEATURES ARE  $\pm 0.005$  TO NOMINAL SIZE UNLESS SPECIFIED DIFFERENTLY HERE.

UNLESS OTHERWISE SPECIFIED: DIMENSIONS ARE IN INCHES .XX $\pm 0.015$ ANGLES $\pm 2.0^\circ$ .XXX $\pm 0.005$ FRACTIONS $\pm 1/64$ .XXXX $\pm 0.0005$ BREAK SHARP EDGES 0.015" MAX MACHINE INSIDE CORNER RADIUS 0.015" MAX ALL $\phi$ s ON SAME AXIS TO BE $\textcircled{C}$ WITHIN 0.003" $\swarrow$ SURFACES TO BE $\perp$ OR $\parallel$ WITHIN 0.001" $\swarrow$ CHAMFER FIRST THREAD 45° ALL SURFACES $\sqrt{32}$		CHECKED BY	Freeman Mfg and Supply 1101 Moore Road Avon, OH 44011	
		CHECKED DATE	TITLE: Stripping Pin, Point	
		<b>PROPRIETARY AND CONFIDENTIAL</b> THE INFORMATION CONTAINED IN THIS DRAWING IS THE SOLE PROPERTY OF FREEMAN MFG. ANY REPRODUCTION IN PART OR AS A WHOLE WITHOUT THE WRITTEN PERMISSION OF FREEMAN MFG IS PROHIBITED.		REV
MATERIAL 1020 CRS	FINISH	SIZE <b>B</b>	PART NO. <b>FM-SPP</b>	
		SCALE: 2:1	SHEET 1 OF 1	