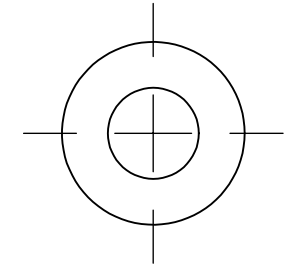
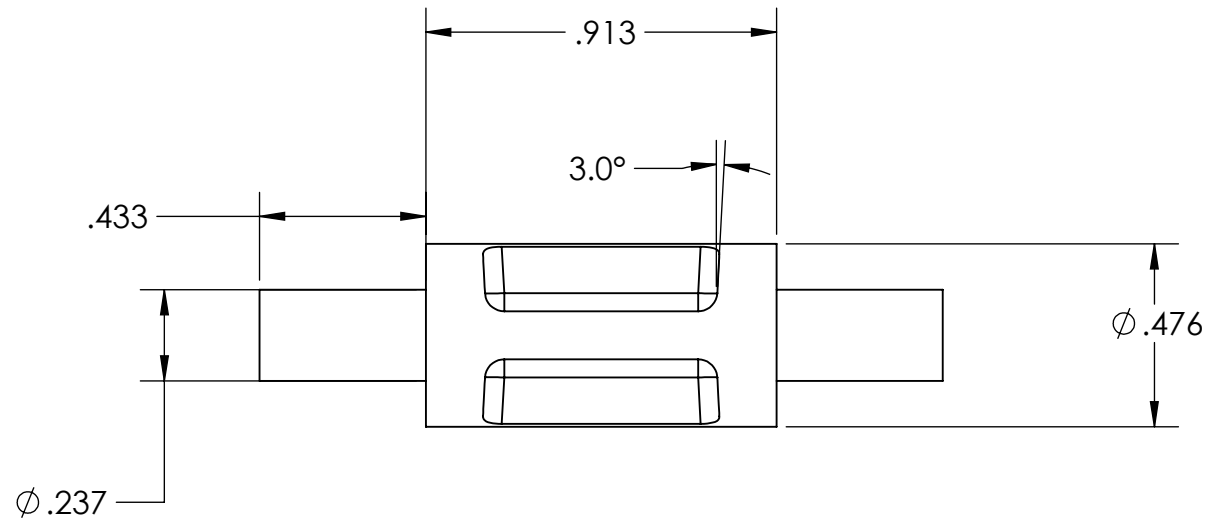
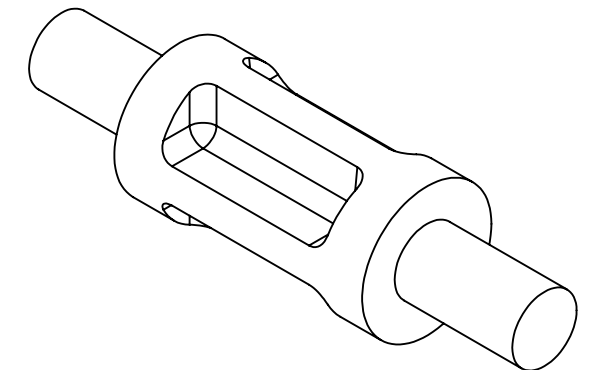
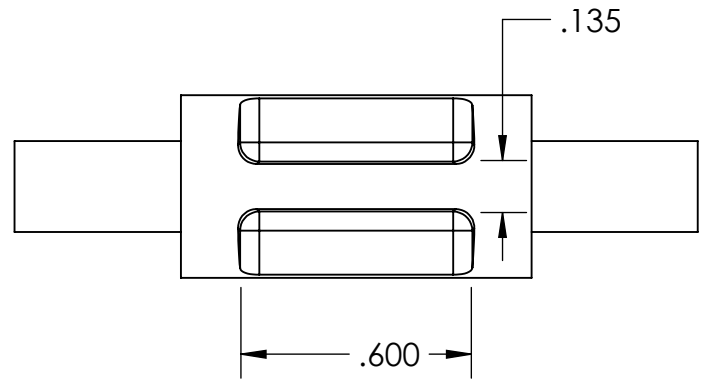


NOTES:
1. BREAK ALL SHARP EDGES

REVISION HISTORY			
REV	BY	DESCRIPTION	DATE

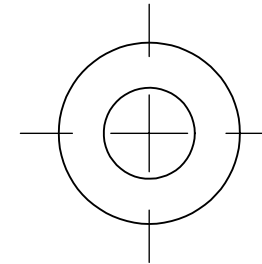
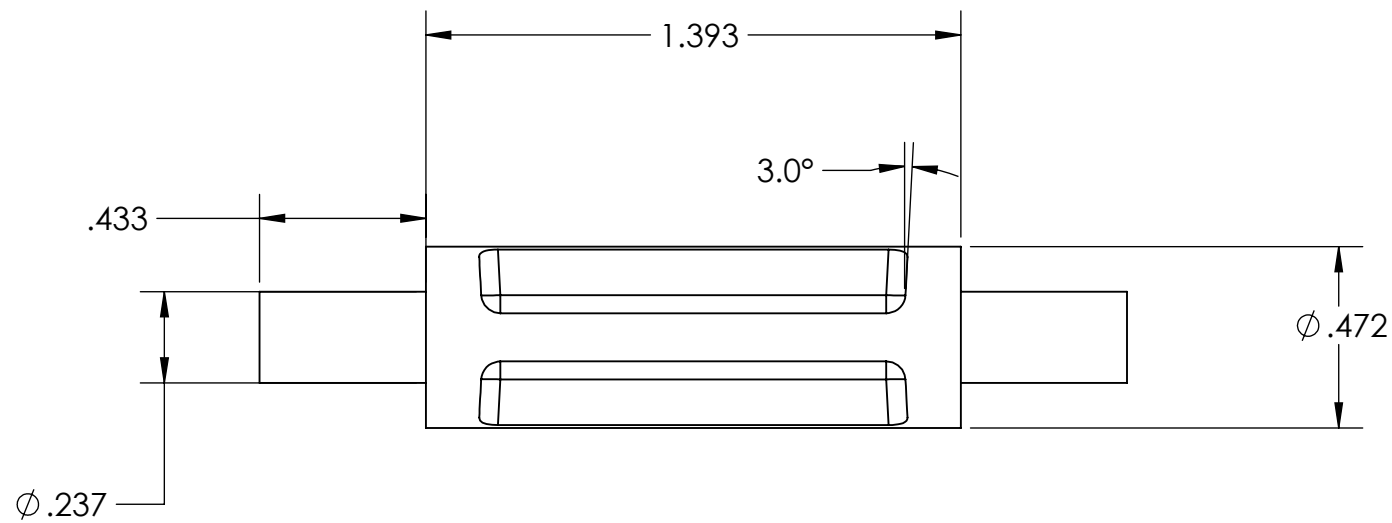
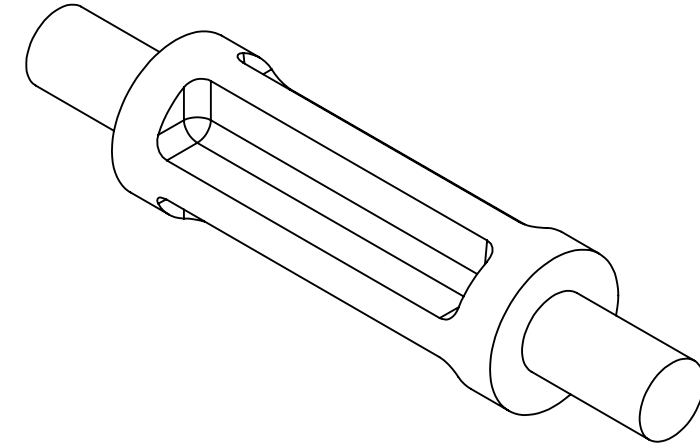
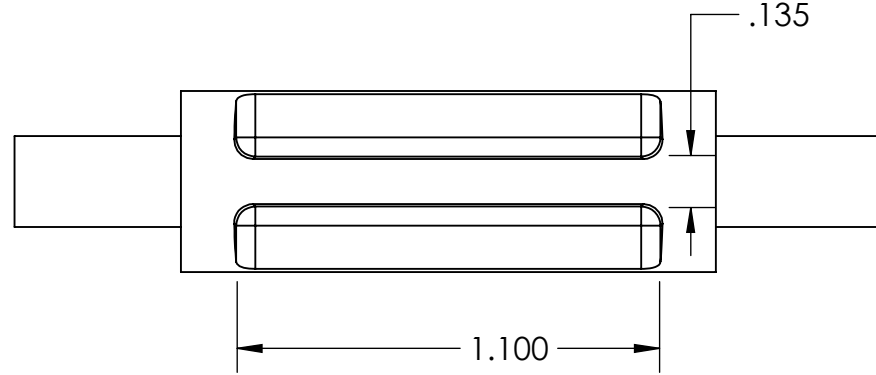


<p>UNLESS OTHERWISE SPECIFIED:</p> <p>DIMENSIONS ARE IN INCHES .XX ± 0.015 ANGLES ± 2.0° .XXX ± 0.005 FRACTIONS ± 1/64 .XXXX ± 0.0005</p> <p>BREAK SHARP EDGES 0.015" MAX MACHINE INSIDE CORNER RADIUS 0.015" MAX</p> <p>ALL ϕs ON SAME AXIS TO BE ◎ WITHIN 0.003" ↗</p> <p>SURFACES TO BE \perp OR \parallel WITHIN 0.001" ↗</p> <p>CHAMFER FIRST THREAD 45°</p> <p>ALL SURFACES 32 ✓</p>		<p>CHECKED BY</p> <p>CHECKED DATE</p>	<p>Freeman Mfg and Supply 1101 Moore Road Avon, OH 44011</p>	
<p>THE INFORMATION CONTAINED IN THIS DRAWING IS THE SOLE PROPERTY OF COMPANY NAME. ANY REPRODUCTION IN PART OR AS A WHOLE WITHOUT THE WRITTEN PERMISSION OF COMPANY NAME IS PROHIBITED.</p>		<p>TITLE: Spacer</p>		
<p>MATERIAL Polycarbonate</p>		<p>SIZE B</p>	<p>PART NO. FM-S</p>	<p>REV</p>
<p>FINISH</p>		<p>SCALE: 4:1</p>	<p>SHEET 1 OF 1</p>	

GENERAL NOTE: IF PART IS NOT FULLY-DEFINED, DEFER TO 3-D CAD DATA. ASSUME ALL FEATURES ARE ±0.005 TO NOMINAL SIZE UNLESS SPECIFIED DIFFERENTLY HERE.

NOTES:
1. BREAK ALL SHARP EDGES

REVISION HISTORY			
REV	BY	DESCRIPTION	DATE

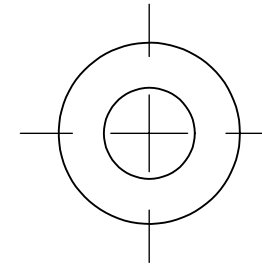
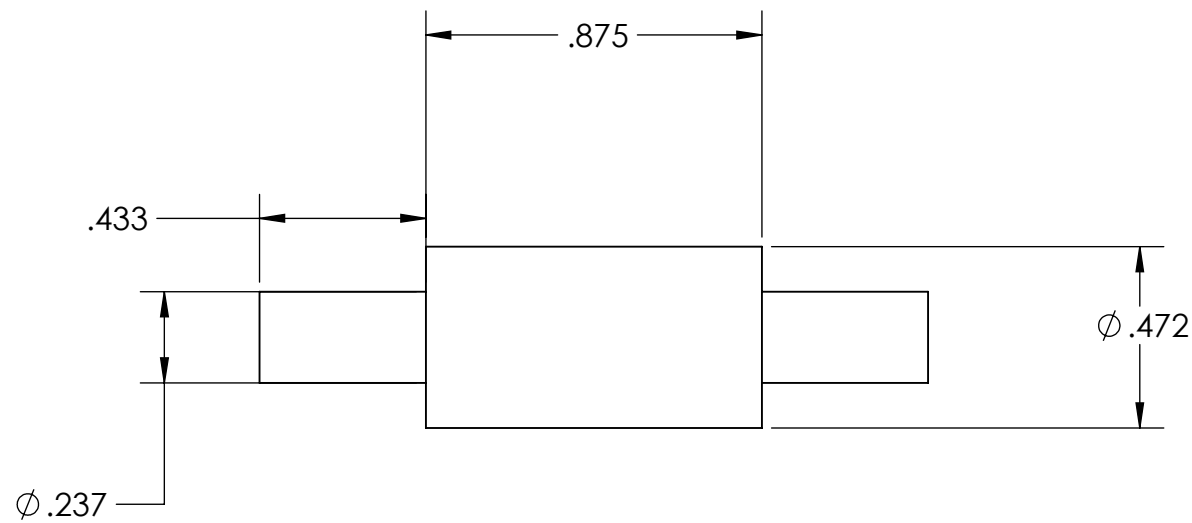
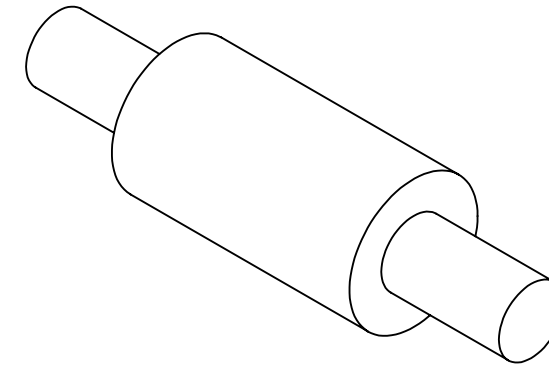
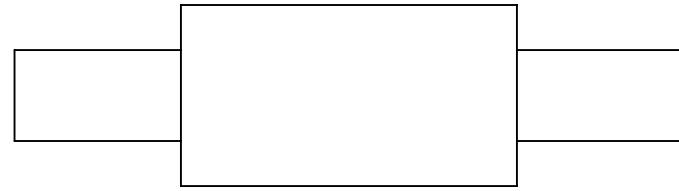


UNLESS OTHERWISE SPECIFIED: DIMENSIONS ARE IN INCHES .XX ± 0.015 ANGLES ± 2.0° .XXX ± 0.005 FRACTIONS ± 1/64 .XXXX ± 0.0005 BREAK SHARP EDGES 0.015" MAX MACHINE INSIDE CORNER RADIUS 0.015" MAX ALL ϕ s ON SAME AXIS TO BE $\text{\textcircled{C}}$ WITHIN 0.003" SURFACES TO BE \perp OR \parallel WITHIN 0.001" CHAMFER FIRST THREAD 45° ALL SURFACES $\sqrt{32}$		CHECKED BY	Freeman Mfg and Supply 1101 Moore Road Avon, OH 44011	
		CHECKED DATE	TITLE: Spacer - Blue, 1-3/8"	
<p>PROPRIETARY AND CONFIDENTIAL</p> <p>THE INFORMATION CONTAINED IN THIS DRAWING IS THE SOLE PROPERTY OF FREEMAN MFG. ANY REPRODUCTION IN PART OR AS A WHOLE WITHOUT THE WRITTEN PERMISSION OF FREEMAN MFG IS PROHIBITED.</p>		MATERIAL Polycarbonate	SIZE B	PART NO. 59964700
		FINISH	SCALE: 4:1	REV
			SHEET 1 OF 1	

GENERAL NOTE: IF PART IS NOT FULLY-DEFINED, DEFER TO 3-D CAD DATA. ASSUME ALL FEATURES ARE ±0.005 TO NOMINAL SIZE UNLESS SPECIFIED DIFFERENTLY HERE.

NOTES:
1. BREAK ALL SHARP EDGES

REVISION HISTORY			
REV	BY	DESCRIPTION	DATE

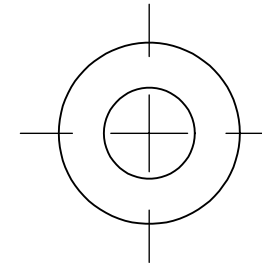
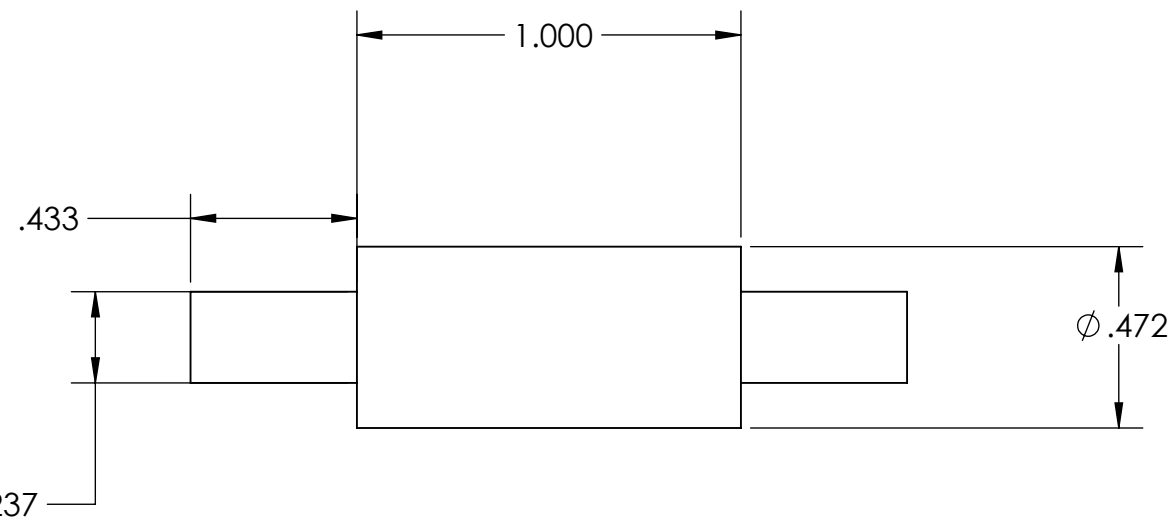
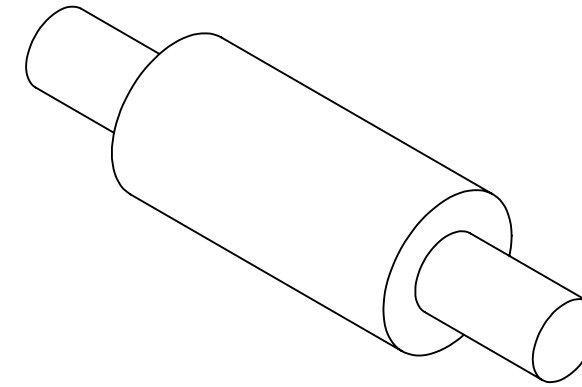
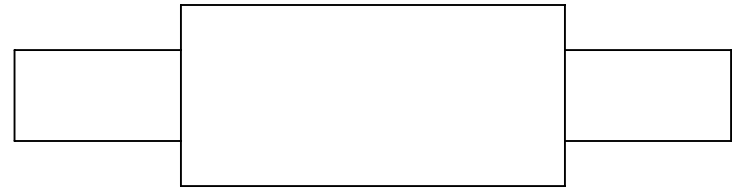


UNLESS OTHERWISE SPECIFIED: DIMENSIONS ARE IN INCHES .XX ± 0.015 ANGLES ± 2.0° .XXX ± 0.005 FRACTIONS ± 1/64 .XXXX ± 0.0005 BREAK SHARP EDGES 0.015" MAX MACHINE INSIDE CORNER RADIUS 0.015" MAX ALL ϕ s ON SAME AXIS TO BE \textcircled{C} WITHIN 0.003" \swarrow SURFACES TO BE \perp OR \parallel WITHIN 0.001" \swarrow CHAMFER FIRST THREAD 45° ALL SURFACES 32/ \swarrow		CHECKED BY	Freeman Mfg and Supply 1101 Moore Road Avon, OH 44011	
		CHECKED DATE	TITLE: Spacer - Black, 7/8"	
		PROPRIETARY AND CONFIDENTIAL THE INFORMATION CONTAINED IN THIS DRAWING IS THE SOLE PROPERTY OF FREEMAN MFG. ANY REPRODUCTION IN PART OR AS A WHOLE WITHOUT THE WRITTEN PERMISSION OF FREEMAN MFG IS PROHIBITED.		REV
		MATERIAL Polycarbonate	SIZE B	PART NO. 59964300
		FINISH	SCALE: 4:1	SHEET 1 OF 1

GENERAL NOTE: IF PART IS NOT FULLY-DEFINED, DEFER TO 3-D CAD DATA. ASSUME ALL FEATURES ARE ±0.005 TO NOMINAL SIZE UNLESS SPECIFIED DIFFERENTLY HERE.

NOTES:
1. BREAK ALL SHARP EDGES

REVISION HISTORY			
REV	BY	DESCRIPTION	DATE

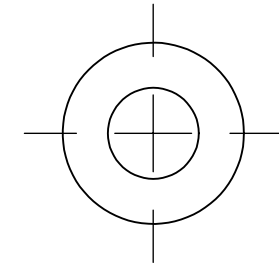
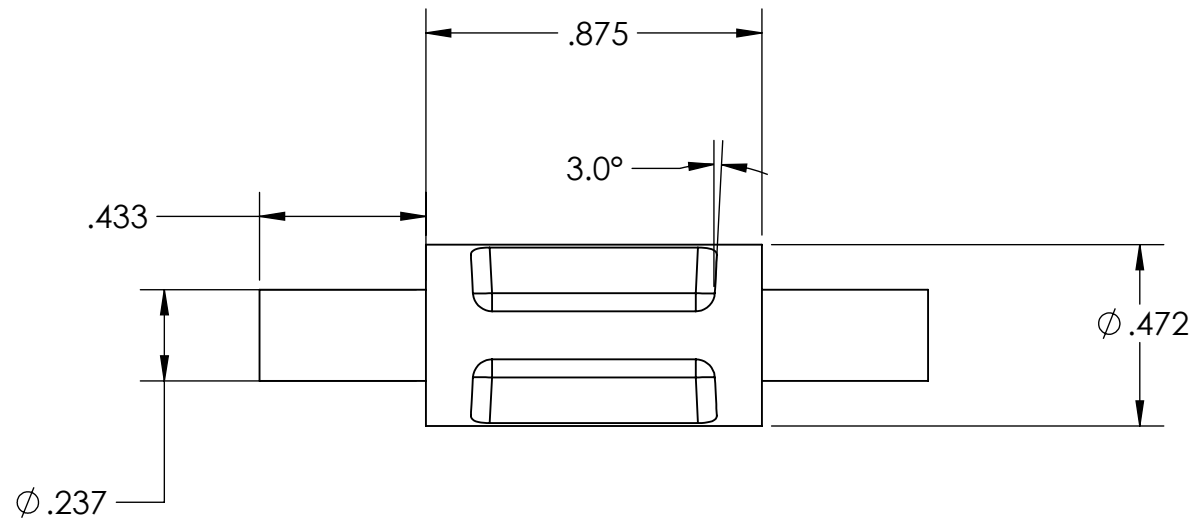
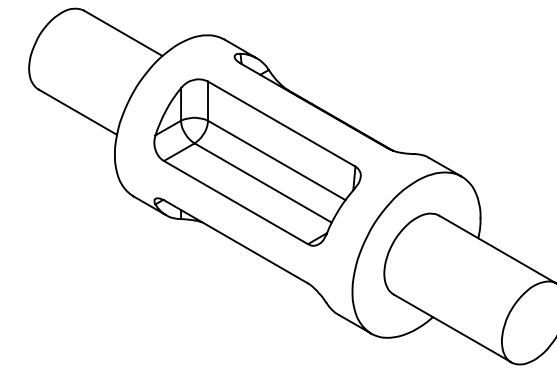
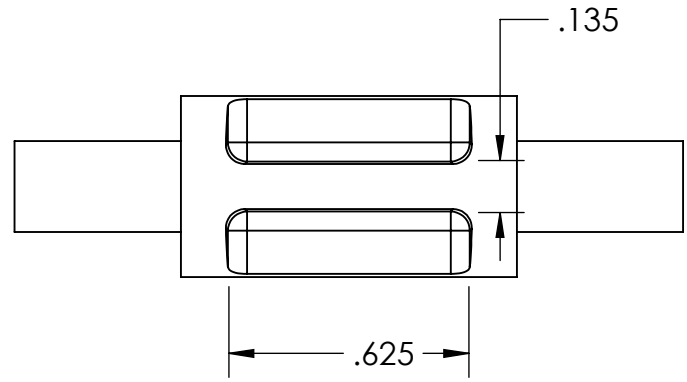


<p>UNLESS OTHERWISE SPECIFIED:</p> <p>DIMENSIONS ARE IN INCHES .XX ± 0.015 ANGLES ± 2.0° .XXX ± 0.005 FRACTIONS ± 1/64 .XXXX ± 0.0005</p> <p>BREAK SHARP EDGES 0.015" MAX MACHINE INSIDE CORNER RADIUS 0.015" MAX</p> <p>ALL ϕs ON SAME AXIS TO BE \textcircled{C} WITHIN 0.003" \swarrow</p> <p>SURFACES TO BE \perp OR \parallel WITHIN 0.001" \swarrow</p> <p>CHAMFER FIRST THREAD 45°</p> <p>ALL SURFACES $\sqrt{32}$</p>		<p>CHECKED BY</p> <p>CHECKED DATE</p>	<p>Freeman Mfg and Supply 1101 Moore Road Avon, OH 44011</p>	
<p>THE INFORMATION CONTAINED IN THIS DRAWING IS THE SOLE PROPERTY OF FREEMAN MFG. ANY REPRODUCTION IN PART OR AS A WHOLE WITHOUT THE WRITTEN PERMISSION OF FREEMAN MFG IS PROHIBITED.</p>		<p>TITLE: Spacer - Black, 1"</p>		
<p>MATERIAL: Polycarbonate</p>		<p>SIZE: B</p>	<p>PART NO. 59964320</p>	<p>REV</p>
<p>FINISH</p>		<p>SCALE: 4:1</p>	<p>SHEET 1 OF 1</p>	

GENERAL NOTE: IF PART IS NOT FULLY-DEFINED, DEFER TO 3-D CAD DATA. ASSUME ALL FEATURES ARE ±0.005 TO NOMINAL SIZE UNLESS SPECIFIED DIFFERENTLY HERE.

NOTES:
1. BREAK ALL SHARP EDGES

REVISION HISTORY			
REV	BY	DESCRIPTION	DATE

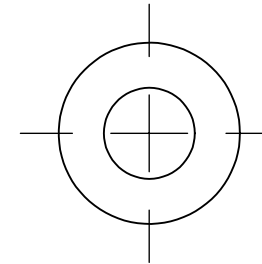
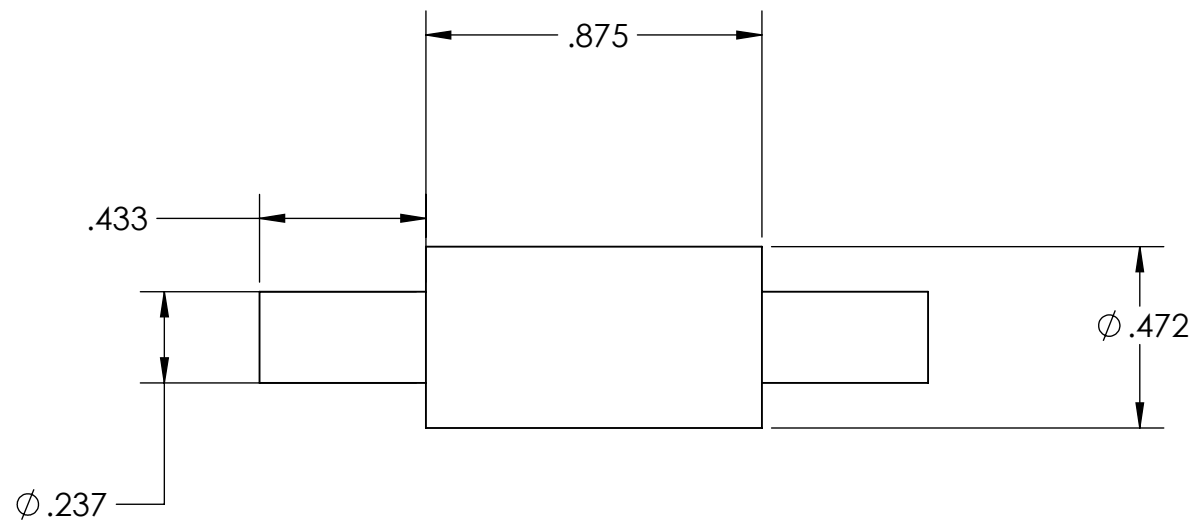
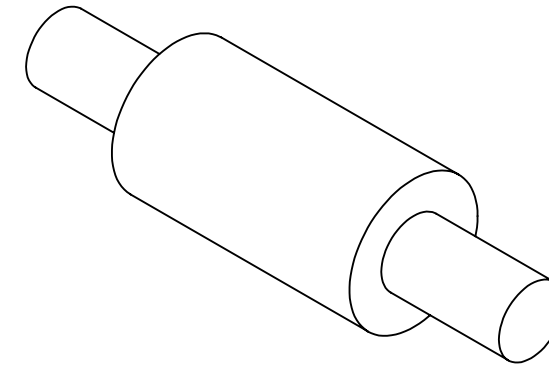


<p>UNLESS OTHERWISE SPECIFIED:</p> <p>DIMENSIONS ARE IN INCHES .XX ± 0.015 ANGLES ± 2.0° .XXX ± 0.005 FRACTIONS ± 1/64 .XXXX ± 0.0005</p> <p>BREAK SHARP EDGES 0.015" MAX MACHINE INSIDE CORNER RADIUS 0.015" MAX</p> <p>ALL ϕs ON SAME AXIS TO BE $\text{\textcircled{C}}$ WITHIN 0.003" \textbackslash SURFACES TO BE \perp OR \parallel WITHIN 0.001" \textbackslash CHAMFER FIRST THREAD 45°</p> <p>ALL SURFACES \textbackslash \textbackslash</p>		<p>CHECKED BY</p> <p>CHECKED DATE</p>	<p>Freeman Mfg and Supply 1101 Moore Road Avon, OH 44011</p>	
<p>THE INFORMATION CONTAINED IN THIS DRAWING IS THE SOLE PROPERTY OF FREEMAN MFG. ANY REPRODUCTION IN PART OR AS A WHOLE WITHOUT THE WRITTEN PERMISSION OF FREEMAN MFG IS PROHIBITED.</p>		<p>TITLE: Spacer - Black, 7/8" w/Divots</p>		
<p>MATERIAL Polycarbonate</p>		<p>SIZE B</p>	<p>PART NO. 59964400</p>	<p>REV</p>
<p>FINISH</p>		<p>SCALE: 4:1</p>	<p>SHEET 1 OF 1</p>	

GENERAL NOTE: IF PART IS NOT FULLY-DEFINED, DEFER TO 3-D CAD DATA. ASSUME ALL FEATURES ARE ±0.005 TO NOMINAL SIZE UNLESS SPECIFIED DIFFERENTLY HERE.

NOTES:
1. BREAK ALL SHARP EDGES

REVISION HISTORY			
REV	BY	DESCRIPTION	DATE

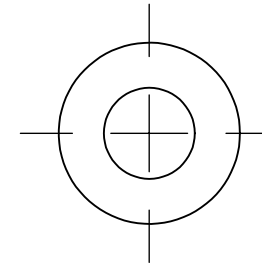
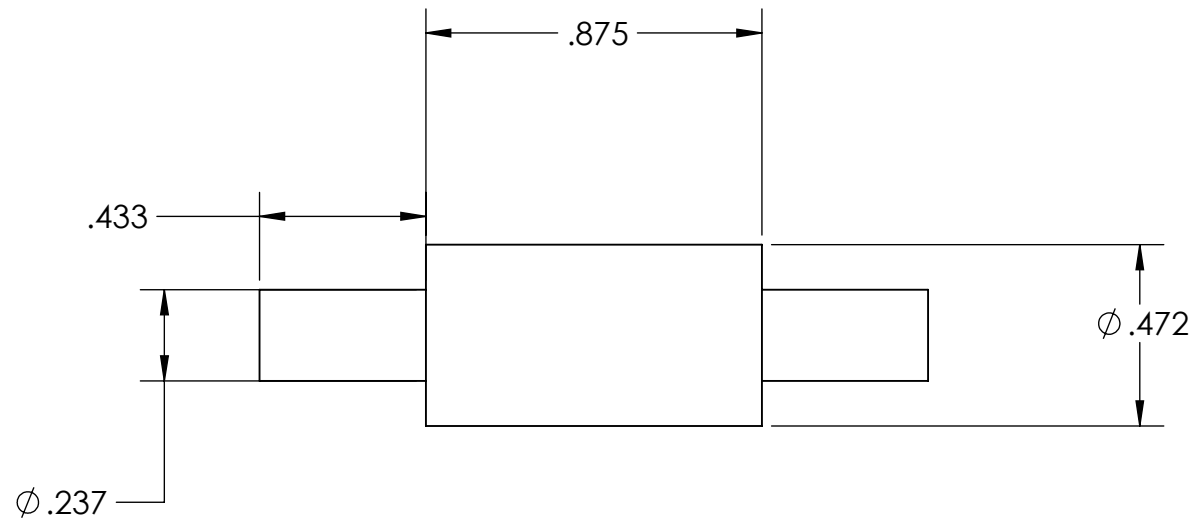
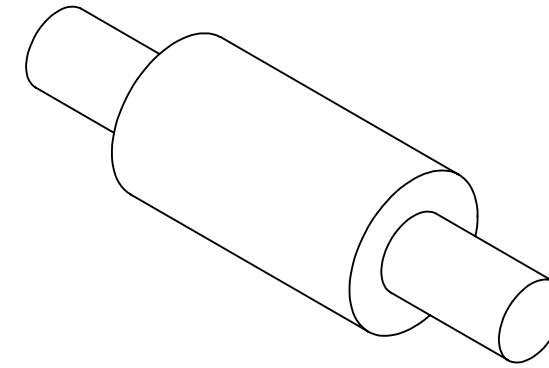


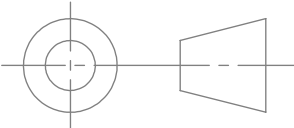
UNLESS OTHERWISE SPECIFIED: DIMENSIONS ARE IN INCHES .XX ± 0.015 ANGLES ± 2.0° .XXX ± 0.005 FRACTIONS ± 1/64 .XXXX ± 0.0005 BREAK SHARP EDGES 0.015" MAX MACHINE INSIDE CORNER RADIUS 0.015" MAX ALL ϕ s ON SAME AXIS TO BE ◎ WITHIN 0.003" ↗ SURFACES TO BE \perp OR \parallel WITHIN 0.001" ↗ CHAMFER FIRST THREAD 45° ALL SURFACES 32 ✓		CHECKED BY	Freeman Mfg and Supply 1101 Moore Road Avon, OH 44011	
THE INFORMATION CONTAINED IN THIS DRAWING IS THE SOLE PROPERTY OF FREEMAN MFG. ANY REPRODUCTION IN PART OR AS A WHOLE WITHOUT THE WRITTEN PERMISSION OF FREEMAN MFG IS PROHIBITED.		CHECKED DATE	TITLE: Spacer - Clear Purple, 7/8"	
MATERIAL Polycarbonate	FINISH	SIZE B	PART NO. 59964500	REV
GENERAL NOTE: IF PART IS NOT FULLY-DEFINED, DEFER TO 3-D CAD DATA. ASSUME ALL FEATURES ARE ±0.005 TO NOMINAL SIZE UNLESS SPECIFIED DIFFERENTLY HERE.		SCALE: 4:1		SHEET 1 OF 1

GENERAL NOTE: IF PART IS NOT FULLY-DEFINED, DEFER TO 3-D CAD DATA. ASSUME ALL FEATURES ARE ±0.005 TO NOMINAL SIZE UNLESS SPECIFIED DIFFERENTLY HERE.

NOTES:
1. BREAK ALL SHARP EDGES

REVISION HISTORY			
REV	BY	DESCRIPTION	DATE



UNLESS OTHERWISE SPECIFIED: DIMENSIONS ARE IN INCHES .XX ± 0.015 ANGLES ± 2.0° .XXX ± 0.005 FRACTIONS ± 1/64 .XXXX ± 0.0005 BREAK SHARP EDGES 0.015" MAX MACHINE INSIDE CORNER RADIUS 0.015" MAX ALL ϕ s ON SAME AXIS TO BE $\text{\textcircled{C}}$ WITHIN 0.003" \textbackslash SURFACES TO BE \perp OR \parallel WITHIN 0.001" \textbackslash CHAMFER FIRST THREAD 45° ALL SURFACES \textbackslash 		CHECKED BY	Freeman Mfg and Supply 1101 Moore Road Avon, OH 44011	
		CHECKED DATE	TITLE: Spacer - Green, 7/8"	
		PROPRIETARY AND CONFIDENTIAL THE INFORMATION CONTAINED IN THIS DRAWING IS THE SOLE PROPERTY OF FREEMAN MFG. ANY REPRODUCTION IN PART OR AS A WHOLE WITHOUT THE WRITTEN PERMISSION OF FREEMAN MFG IS PROHIBITED.		SIZE B PART NO. 59964600 SCALE: 4:1 SHEET 1 OF 1
		MATERIAL Polycarbonate	REV	

GENERAL NOTE: IF PART IS NOT FULLY-DEFINED, DEFER TO 3-D CAD DATA. ASSUME ALL FEATURES ARE ±0.005 TO NOMINAL SIZE UNLESS SPECIFIED DIFFERENTLY HERE.