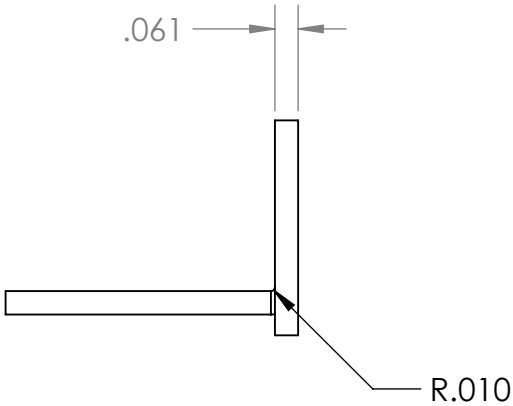
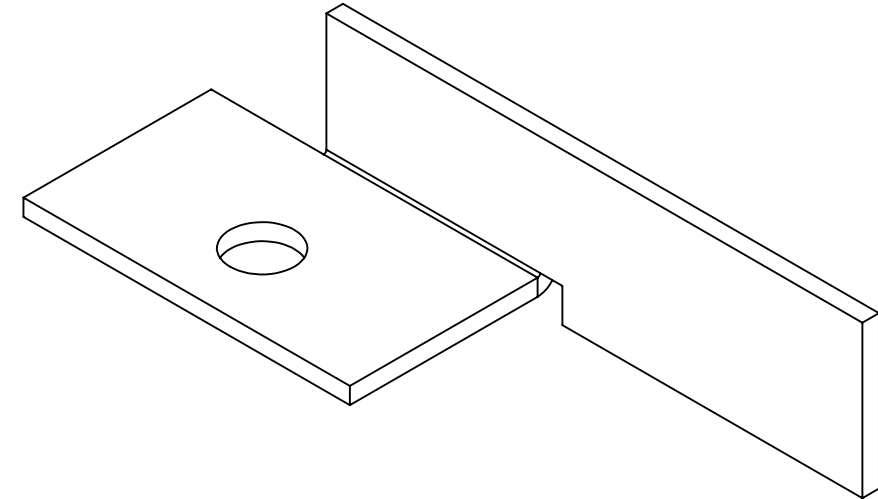
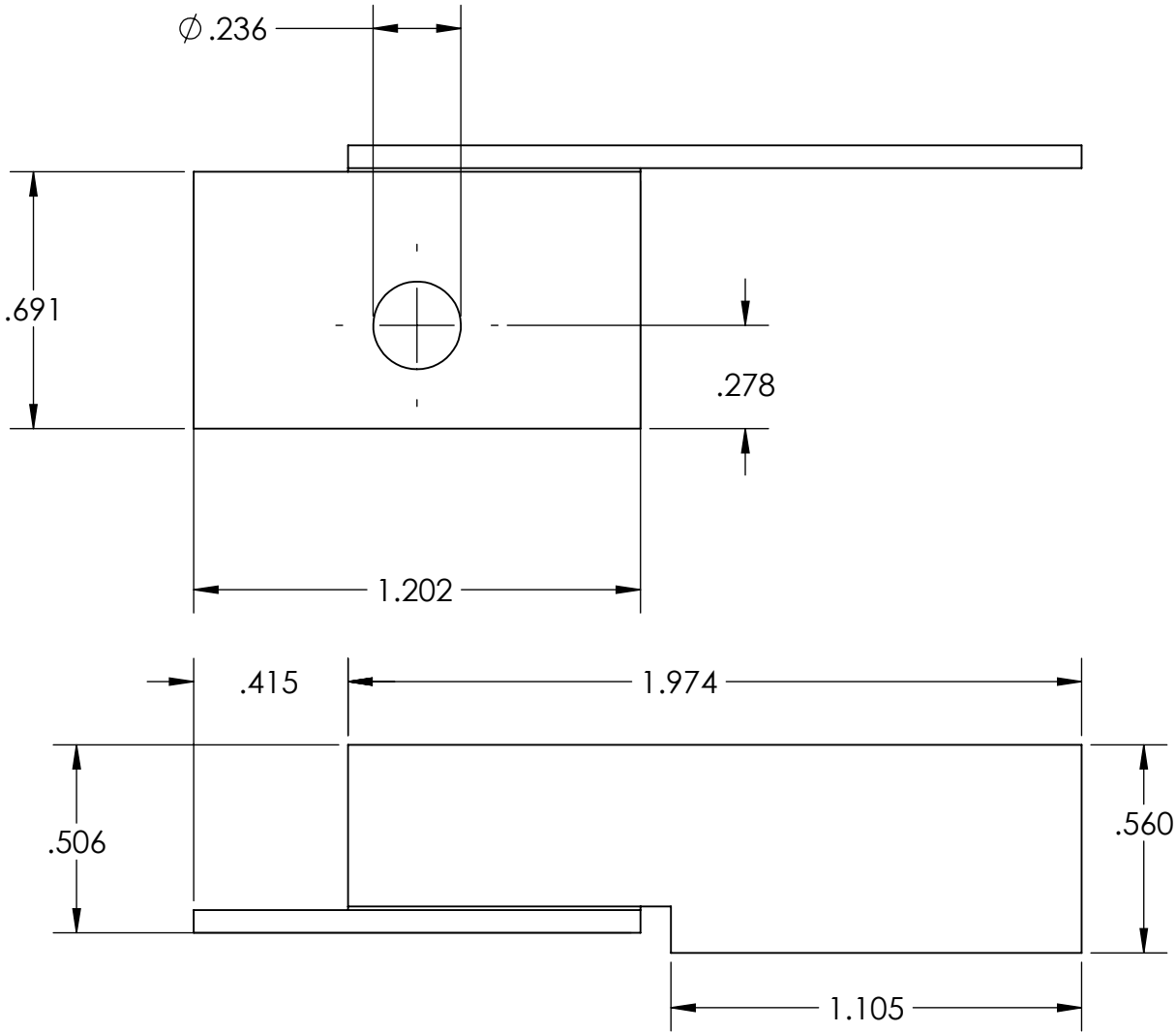


NOTES:
1. BREAK ALL SHARP EDGES

REVISION HISTORY			
REV	BY	DESCRIPTION	DATE

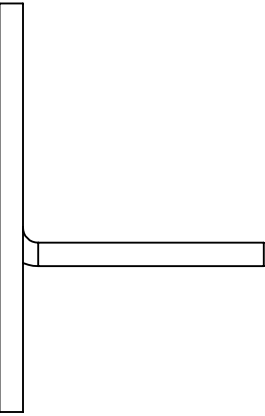
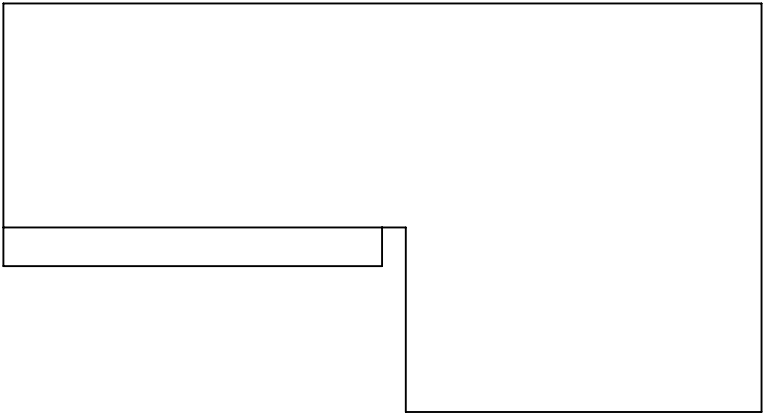
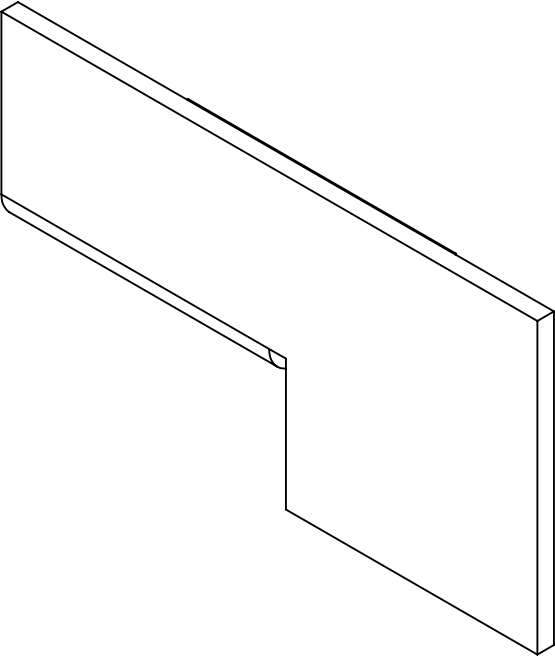
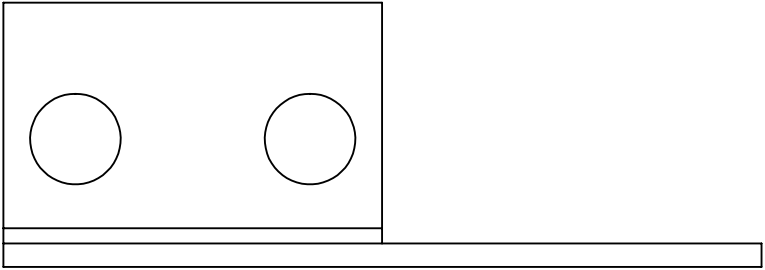


GENERAL NOTE: IF PART IS NOT FULLY-DEFINED, DEFER TO 3-D CAD DATA. ASSUME ALL FEATURES ARE ± 0.005 TO NOMINAL SIZE UNLESS SPECIFIED DIFFERENTLY HERE.

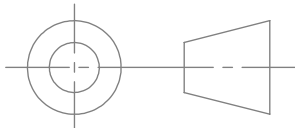
UNLESS OTHERWISE SPECIFIED: DIMENSIONS ARE IN INCHES .XX ± 0.015 ANGLES $\pm 2.0^\circ$.XXX ± 0.005 FRACTIONS $\pm 1/64$.XXXX ± 0.0005 BREAK SHARP EDGES 0.015" MAX MACHINE INSIDE CORNER RADIUS 0.015" MAX ALL \varnothing s ON SAME AXIS TO BE \varnothing WITHIN 0.003" SURFACES TO BE \perp OR \parallel WITHIN 0.001" CHAMFER FIRST THREAD 45° ALL SURFACES $\sqrt{32}$ 		CHECKED BY	Freeman Mfg and Supply 1101 Moore Road Avon, OH 44011	
		CHECKED DATE		
THE INFORMATION CONTAINED IN THIS DRAWING IS THE SOLE PROPERTY OF COMPANY NAME. ANY REPRODUCTION IN PART OR AS A WHOLE WITHOUT THE WRITTEN PERMISSION OF COMPANY NAME IS PROHIBITED.		TITLE: Separator Knife - Short (RH)		REV
		SIZE B	PART NO. 59819700	
MATERIAL 1020 CRS Sheet		SCALE: 2:1		SHEET 1 OF 1
FINISH				

NOTES:
1. BREAK ALL SHARP EDGES
2. PART IS A MIRRORED VERSION OF 59819300 - REFER TO THIS DRAWING FOR DIMENSIONS AND FEATURE INFO

REVISION HISTORY			
REV	BY	DESCRIPTION	DATE

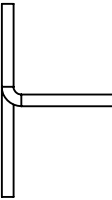
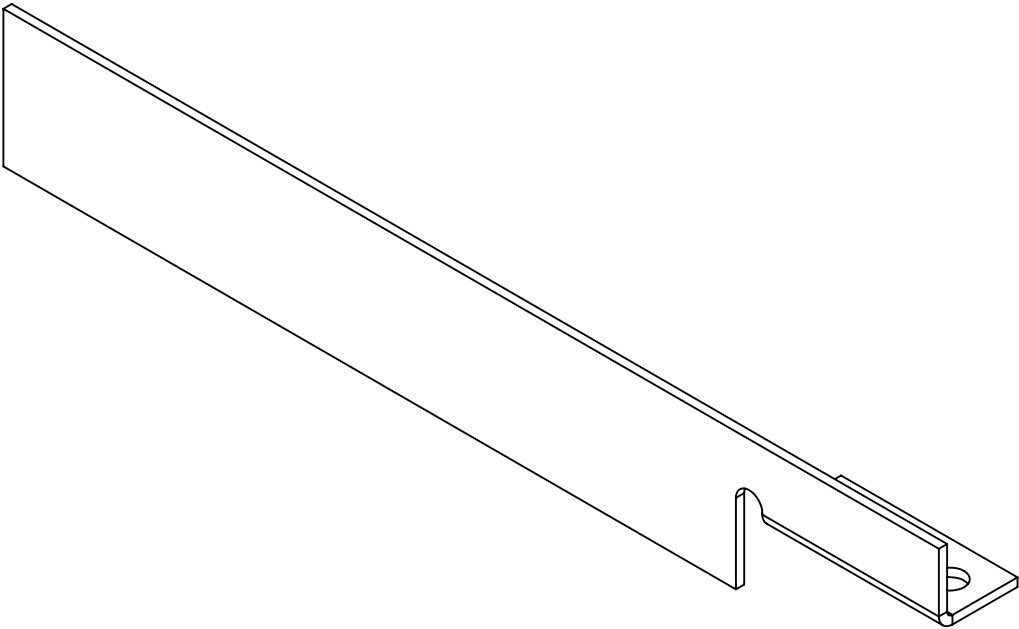
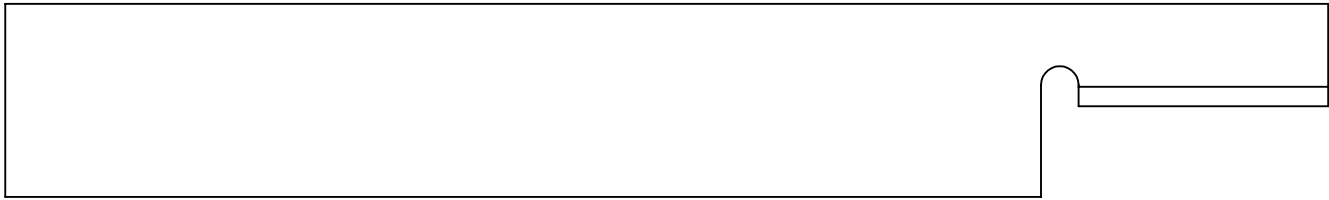


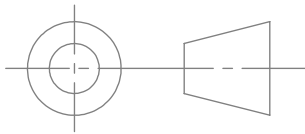
GENERAL NOTE: IF PART IS NOT FULLY-DEFINED, DEFER TO 3-D CAD DATA. ASSUME ALL FEATURES ARE ± 0.005 TO NOMINAL SIZE UNLESS SPECIFIED DIFFERENTLY HERE.

UNLESS OTHERWISE SPECIFIED:				Freeman Mfg and Supply 1101 Moore Road Avon, OH 44011		
DIMENSIONS ARE IN INCHES .XX ± 0.015 ANGLES ± 2.0° .XXX ± 0.005 FRACTIONS ± 1/64 .XXXX ±0.0005 BREAK SHARP EDGES 0.015" MAX MACHINE INSIDE CORNER RADIUS 0.015" MAX ALL Øs ON SAME AXIS TO BE ◎ WITHIN 0.003" ↗ SURFACES TO BE ⊥ OR // WITHIN 0.001" ↗ CHAMFER FIRST THREAD 45° ALL SURFACES 32/√		CHECKED BY				
		CHECKED DATE		TITLE: Separator Knife - Deep (LH)		
		PROPRIETARY AND CONFIDENTIAL THE INFORMATION CONTAINED IN THIS DRAWING IS THE SOLE PROPERTY OF COMPANY NAME. ANY REPRODUCTION IN PART OR AS A WHOLE WITHOUT THE WRITTEN PERMISSION OF COMPANY NAME IS PROHIBITED.				
		MATERIAL		SIZE B	PART NO. 59819200	REV
		FINISH		SCALE: 2:1		SHEET 1 OF 1

NOTES:
1. BREAK ALL SHARP EDGES
2. PART IS A MIRRORED VERSION OF 59947600 - REFER TO THIS DRAWING FOR DIMENSIONS AND FEATURE INFO

REVISION HISTORY			
REV	BY	DESCRIPTION	DATE

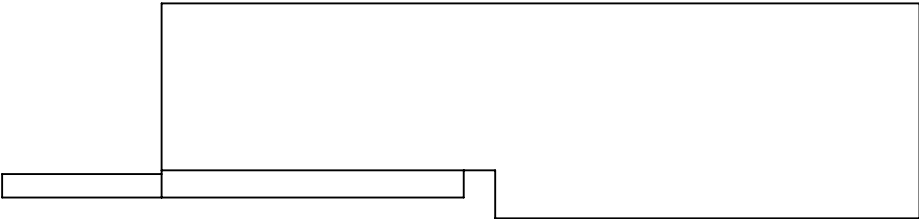
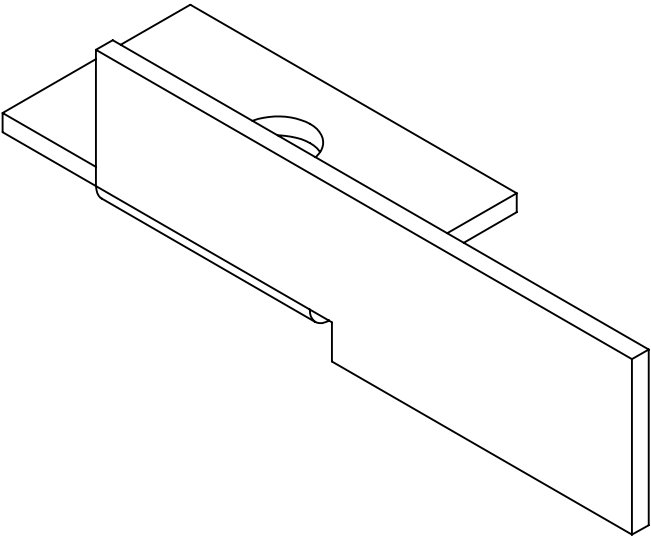
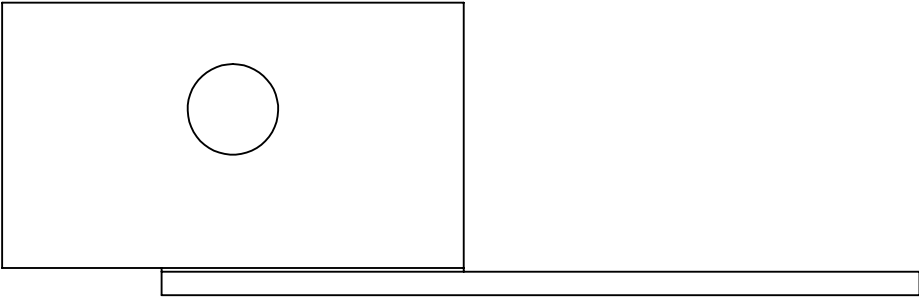


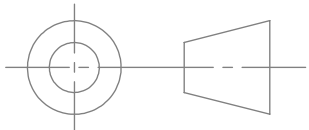
UNLESS OTHERWISE SPECIFIED:				Freeman Mfg and Supply 1101 Moore Road Avon, OH 44011			
DIMENSIONS ARE IN INCHES .XX ± 0.015 ANGLES ± 2.0° .XXX ± 0.005 FRACTIONS ± 1/64 .XXXX ± 0.0005		CHECKED BY					
BREAK SHARP EDGES 0.015" MAX MACHINE INSIDE CORNER RADIUS 0.015" MAX		CHECKED DATE					
ALL Øs ON SAME AXIS TO BE ◎ WITHIN 0.003" ↗		PROPRIETARY AND CONFIDENTIAL THE INFORMATION CONTAINED IN THIS DRAWING IS THE SOLE PROPERTY OF COMPANY NAME. ANY REPRODUCTION IN PART OR AS A WHOLE WITHOUT THE WRITTEN PERMISSION OF COMPANY NAME IS PROHIBITED.		TITLE: Separator Knife - Long (RH)			
SURFACES TO BE ⊥ OR // WITHIN 0.001" ↗							
CHAMFER FIRST THREAD 45°							
ALL SURFACES 32/✓							
				SIZE B			
				PART NO. 59947700		REV	
		MATERIAL		SCALE: 1:1		SHEET 1 OF 1	
		FINISH					

GENERAL NOTE: IF PART IS NOT FULLY-DEFINED, DEFER TO 3-D CAD DATA. ASSUME ALL FEATURES ARE ±0.005 TO NOMINAL SIZE UNLESS SPECIFIED DIFFERENTLY HERE.

NOTES:
1. BREAK ALL SHARP EDGES
2. PART IS A MIRRORED VERSION OF 59819700 - REFER TO THIS DRAWING FOR DIMENSIONS AND FEATURE INFO

REVISION HISTORY			
REV	BY	DESCRIPTION	DATE

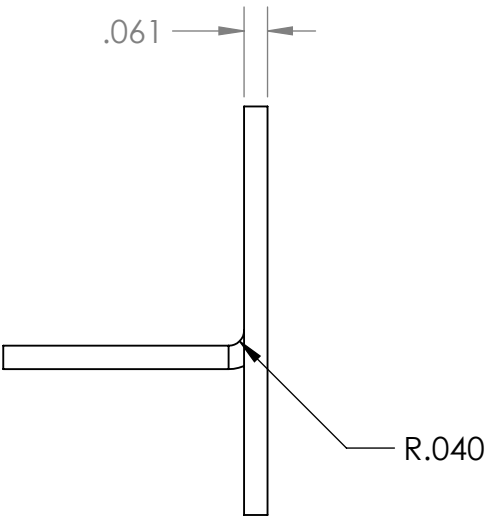
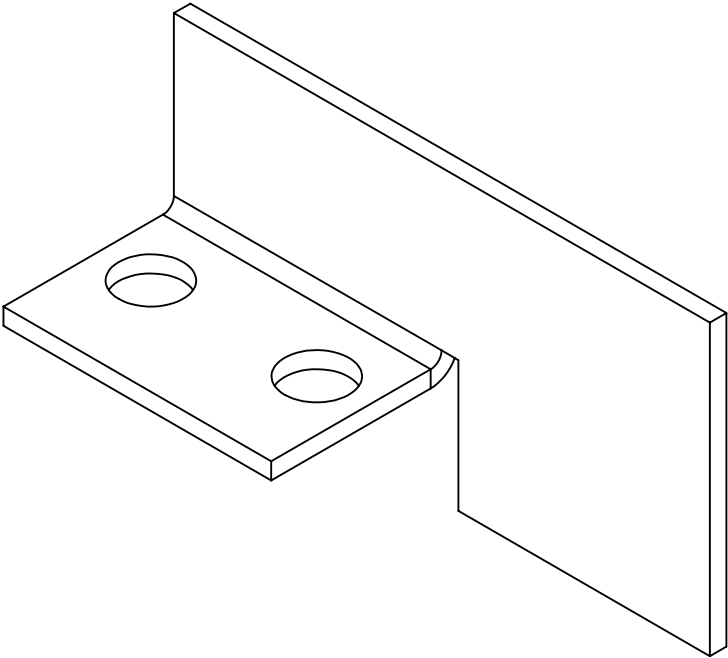
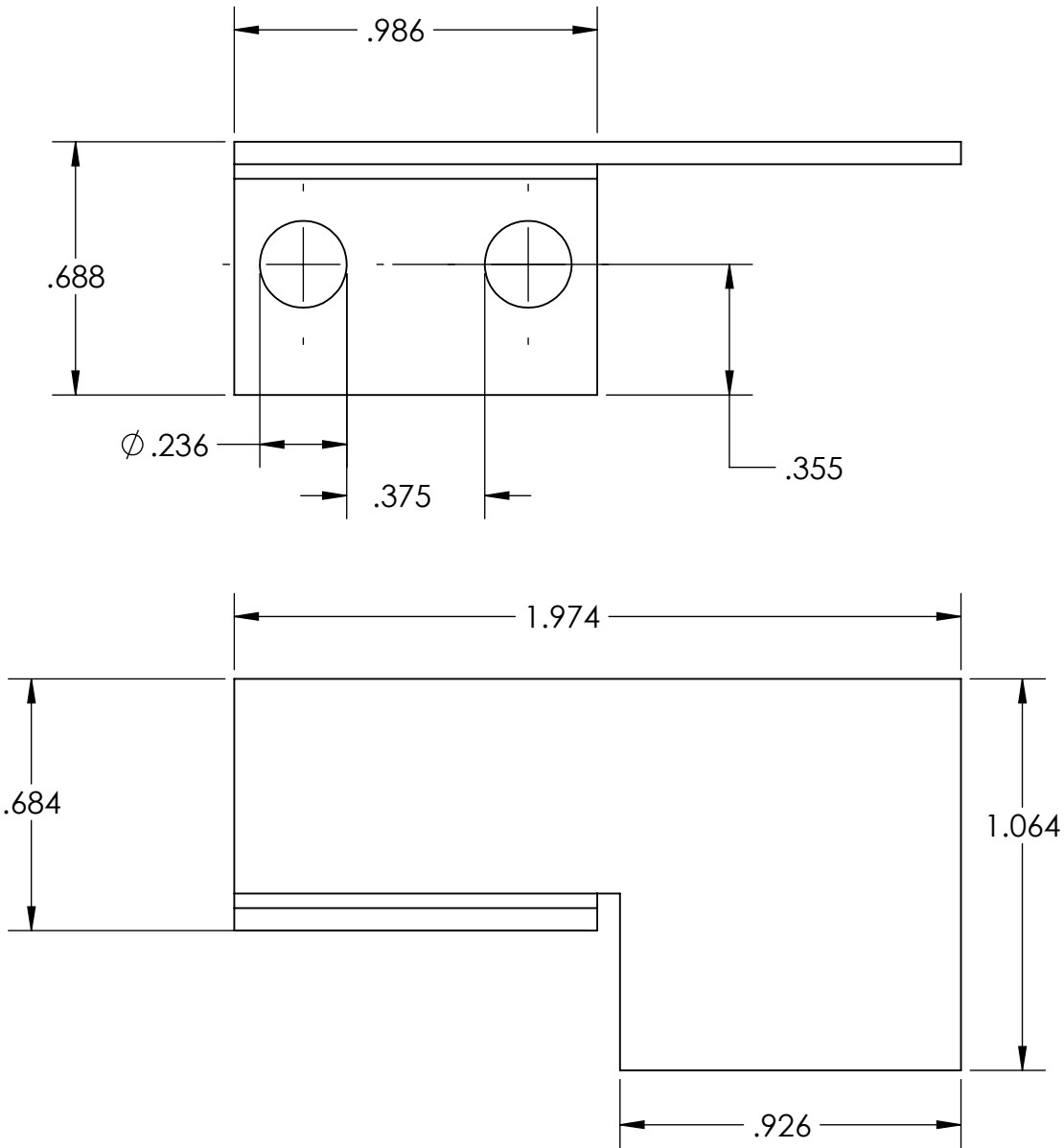


UNLESS OTHERWISE SPECIFIED:				Freeman Mfg and Supply 1101 Moore Road Avon, OH 44011	
DIMENSIONS ARE IN INCHES .XX ± 0.015 ANGLES ± 2.0° .XXX ± 0.005 FRACTIONS ± 1/64 .XXXX ± 0.0005		CHECKED BY			
BREAK SHARP EDGES 0.015" MAX MACHINE INSIDE CORNER RADIUS 0.015" MAX		CHECKED DATE			
ALL Øs ON SAME AXIS TO BE ◎ WITHIN 0.003" ↗		PROPRIETARY AND CONFIDENTIAL THE INFORMATION CONTAINED IN THIS DRAWING IS THE SOLE PROPERTY OF COMPANY NAME. ANY REPRODUCTION IN PART OR AS A WHOLE WITHOUT THE WRITTEN PERMISSION OF COMPANY NAME IS PROHIBITED.		TITLE: Spearator Knife - Short (LH)	
SURFACES TO BE ⊥ OR // WITHIN 0.001" ↗				SIZE B	PART NO. 59819100
CHAMFER FIRST THREAD 45°		MATERIAL		SCALE: 2:1	
ALL SURFACES 32/√				SHEET 1 OF 1	
		FINISH			

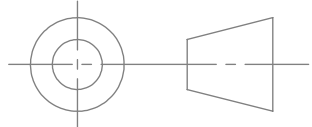
GENERAL NOTE: IF PART IS NOT FULLY-DEFINED, DEFER TO 3-D CAD DATA. ASSUME ALL FEATURES ARE ±0.005 TO NOMINAL SIZE UNLESS SPECIFIED DIFFERENTLY HERE.

NOTES:
1. BREAK ALL SHARP EDGES

REVISION HISTORY			
REV	BY	DESCRIPTION	DATE

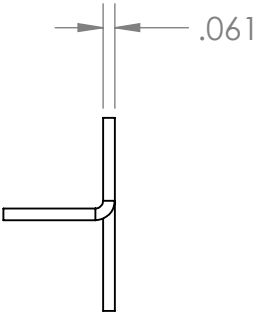
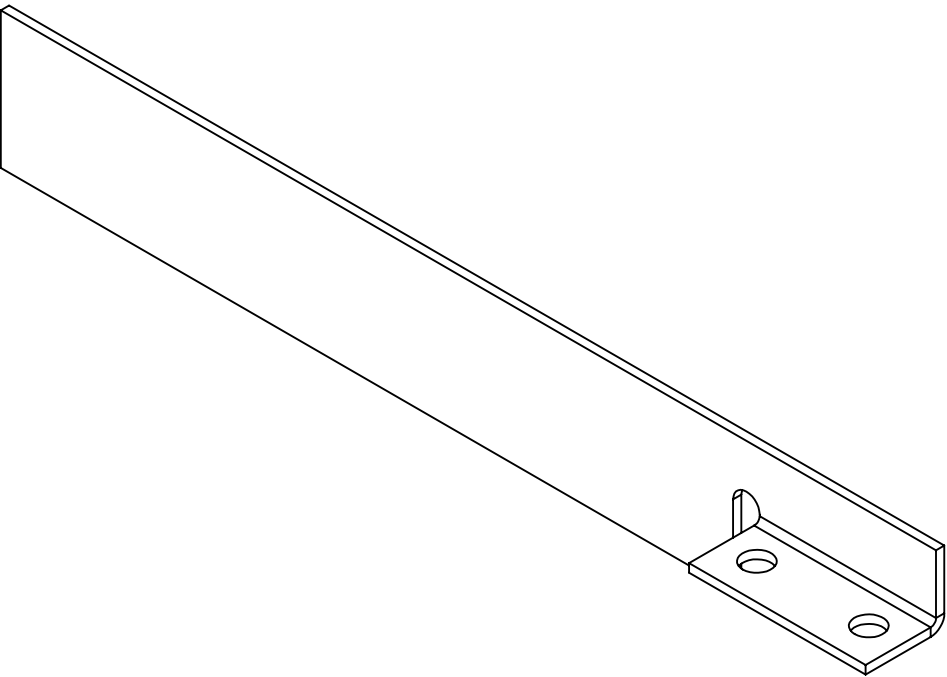
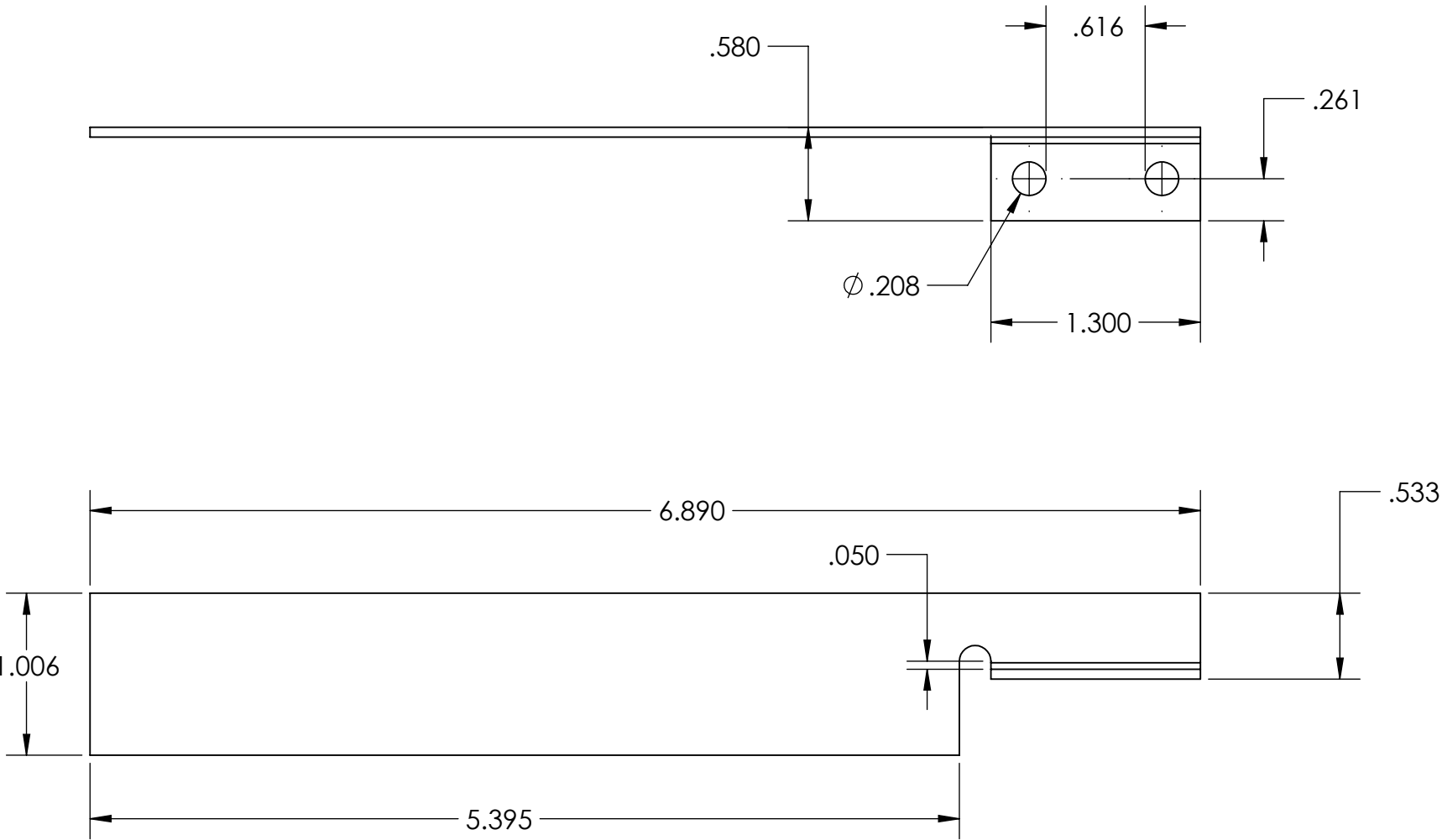


GENERAL NOTE: IF PART IS NOT FULLY-DEFINED, DEFER TO 3-D CAD DATA. ASSUME ALL FEATURES ARE ±0.005 TO NOMINAL SIZE UNLESS SPECIFIED DIFFERENTLY HERE.

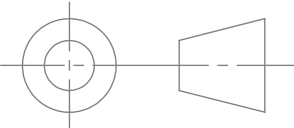
UNLESS OTHERWISE SPECIFIED:				Freeman Mfg and Supply 1101 Moore Road Avon, OH 44011		
DIMENSIONS ARE IN INCHES .XX ± 0.015 ANGLES ± 2.0° .XXX ± 0.005 FRACTIONS ± 1/64 .XXXX ±0.0005 BREAK SHARP EDGES 0.015" MAX MACHINE INSIDE CORNER RADIUS 0.015" MAX ALL Øs ON SAME AXIS TO BE ◎ WITHIN 0.003" ↗ SURFACES TO BE ⊥ OR // WITHIN 0.001" ↗ CHAMFER FIRST THREAD 45° ALL SURFACES 32/√		CHECKED BY				
		CHECKED DATE		TITLE: Separator Knife - Deep (RH)		
		PROPRIETARY AND CONFIDENTIAL THE INFORMATION CONTAINED IN THIS DRAWING IS THE SOLE PROPERTY OF COMPANY NAME. ANY REPRODUCTION IN PART OR AS A WHOLE WITHOUT THE WRITTEN PERMISSION OF COMPANY NAME IS PROHIBITED.				
		MATERIAL 1020 CRS Sheet		SIZE B	PART NO. 59819300	REV
		FINISH		SCALE: 2:1		SHEET 1 OF 1

NOTES:
1. BREAK ALL SHARP EDGES

REVISION HISTORY			
REV	BY	DESCRIPTION	DATE



GENERAL NOTE: IF PART IS NOT FULLY-DEFINED, DEFER TO 3-D CAD DATA. ASSUME ALL FEATURES ARE ± 0.005 TO NOMINAL SIZE UNLESS SPECIFIED DIFFERENTLY HERE.

UNLESS OTHERWISE SPECIFIED: DIMENSIONS ARE IN INCHES .XX ± 0.015 ANGLES $\pm 2.0^\circ$.XXX ± 0.005 FRACTIONS $\pm 1/64$.XXXX ± 0.0005 BREAK SHARP EDGES 0.015" MAX MACHINE INSIDE CORNER RADIUS 0.015" MAX ALL ϕ s ON SAME AXIS TO BE \odot WITHIN 0.003" SURFACES TO BE \perp OR \parallel WITHIN 0.001" CHAMFER FIRST THREAD 45° ALL SURFACES $\sqrt{32}$ 		CHECKED BY		Freeman Mfg and Supply 1101 Moore Road Avon, OH 44011	
		CHECKED DATE			
THE INFORMATION CONTAINED IN THIS DRAWING IS THE SOLE PROPERTY OF COMPANY NAME. ANY REPRODUCTION IN PART OR AS A WHOLE WITHOUT THE WRITTEN PERMISSION OF COMPANY NAME IS PROHIBITED.		TITLE:		Separator Knife - Long (LH)	
		SIZE	PART NO.	REV	
MATERIAL		SCALE:		SHEET 1 OF 1	
FINISH					