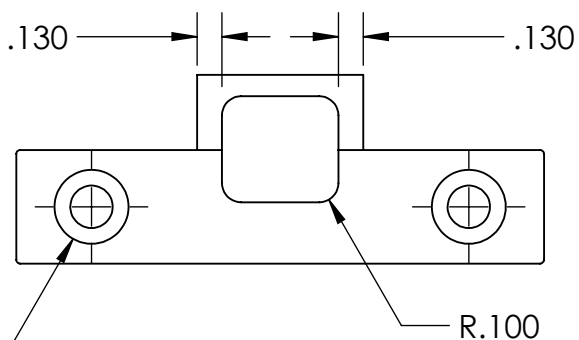
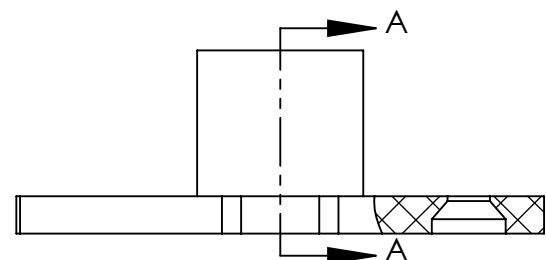
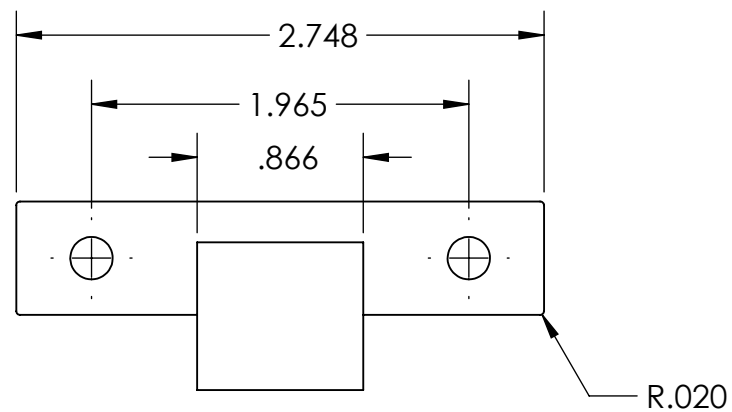
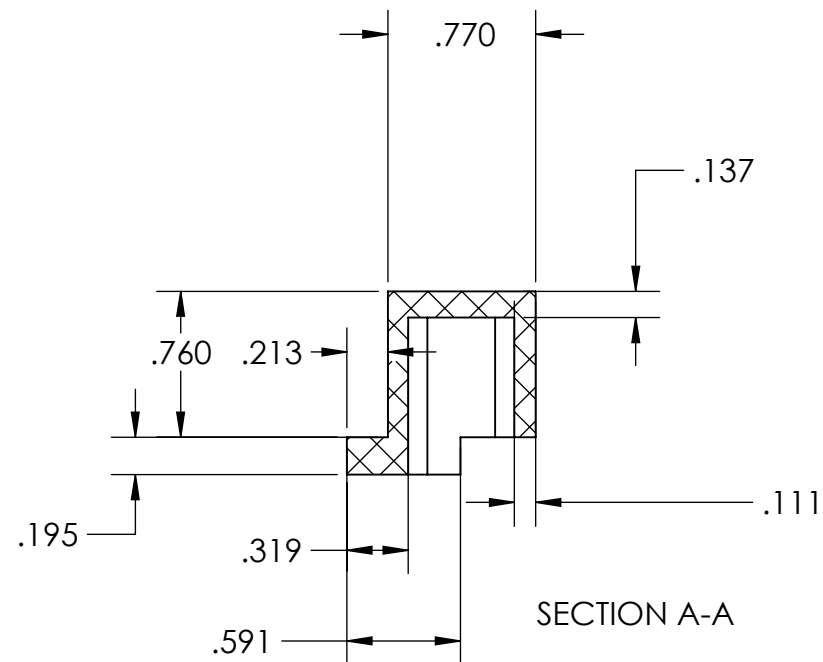


NOTES:  
1. BREAK ALL SHARP EDGES

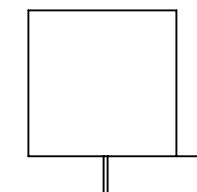
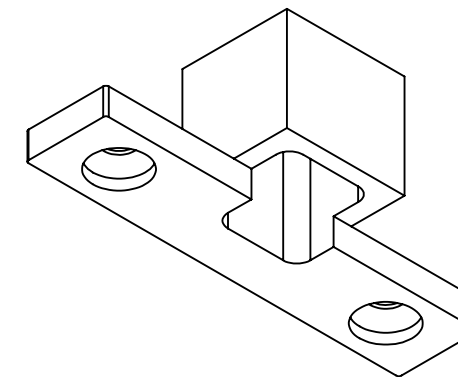
REVISION HISTORY			
REV	BY	DESCRIPTION	DATE

D  
C  
B  
A

D  
C  
B  
A



2X  $\phi$  .221 THRU  
 $\surd$   $\phi$  .385 X 82°  
 $\sqsubset$   $\phi$  .385  $\nabla$  .076



GENERAL NOTE: IF PART IS NOT FULLY-DEFINED, DEFER TO 3-D CAD DATA. ASSUME ALL FEATURES ARE  $\pm 0.005$  TO NOMINAL SIZE UNLESS SPECIFIED DIFFERENTLY HERE.

UNLESS OTHERWISE SPECIFIED:

DIMENSIONS ARE IN INCHES  
 .XX  $\pm 0.015$  ANGLES  $\pm 2.0^\circ$   
 .XXX  $\pm 0.005$  FRACTIONS  $\pm 1/64$   
 .XXXX  $\pm 0.0005$

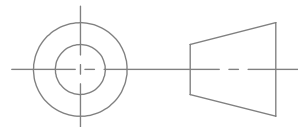
BREAK SHARP EDGES 0.015" MAX  
 MACHINE INSIDE CORNER RADIUS 0.015" MAX

ALL  $\phi$ s ON SAME AXIS TO BE  $\odot$  WITHIN 0.003"  $\swarrow$

SURFACES TO BE  $\perp$  OR  $\parallel$  WITHIN 0.001"  $\swarrow$

CHAMFER FIRST THREAD 45°

ALL SURFACES  $\surd$



CHECKED BY	
CHECKED DATE	
<b>PROPRIETARY AND CONFIDENTIAL</b>	
THE INFORMATION CONTAINED IN THIS DRAWING IS THE SOLE PROPERTY OF COMPANY NAME. ANY REPRODUCTION IN PART OR AS A WHOLE WITHOUT THE WRITTEN PERMISSION OF COMPANY NAME IS PROHIBITED.	
MATERIAL	Nylon 6/6, Black
FINISH	

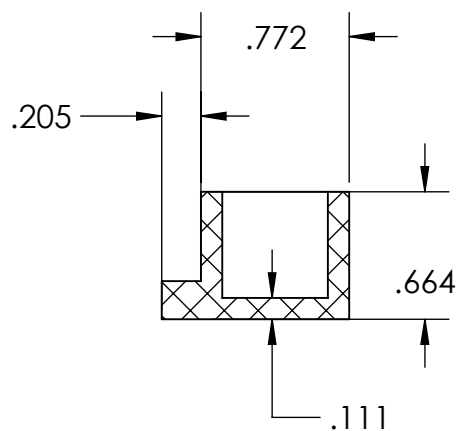
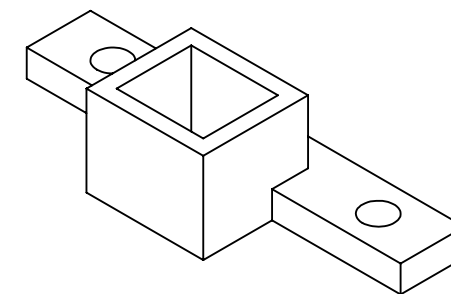
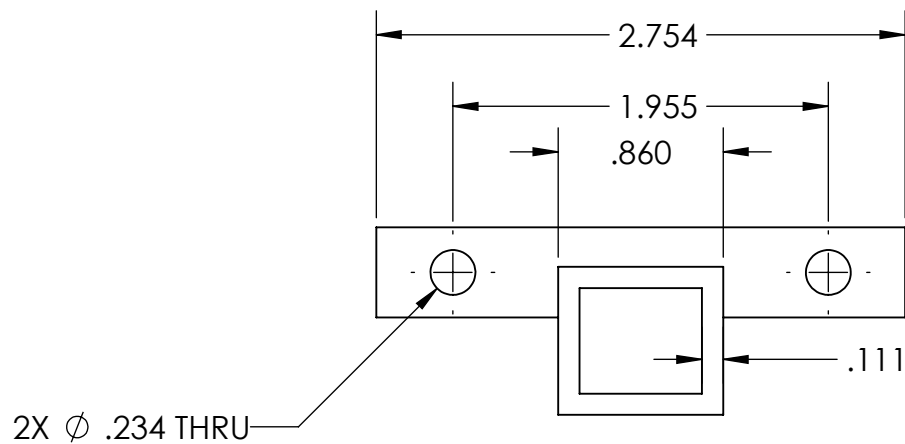
Freeman Mfg and Supply 1101 Moore Road Avon, OH 44011		
TITLE: Centerline Block, Large Black		
SIZE <b>B</b>	PART NO. <b>FM-CBLB</b>	REV
SCALE: 1:1		SHEET 1 OF 1

8 7 6 5 4 3 2 1

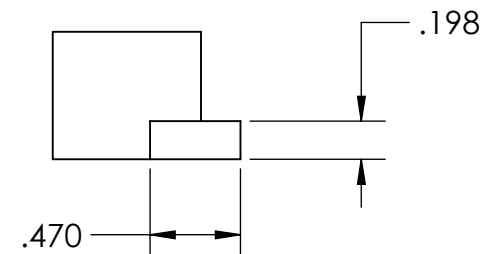
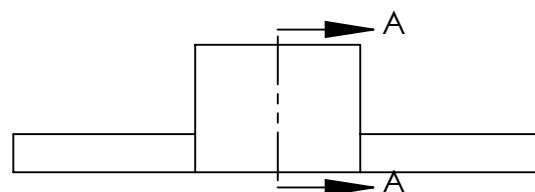
8 7 6 5 4 3 2 1

NOTES:  
1. BREAK ALL SHARP EDGES

REVISION HISTORY			
REV	BY	DESCRIPTION	DATE



SECTION A-A  
SCALE 1 : 1



UNLESS OTHERWISE SPECIFIED: DIMENSIONS ARE IN INCHES .XX ± 0.015 ANGLES ± 2.0° .XXX ± 0.005 FRACTIONS ± 1/64 .XXXX ± 0.0005 BREAK SHARP EDGES 0.015" MAX MACHINE INSIDE CORNER RADIUS 0.015" MAX ALL Øs ON SAME AXIS TO BE ◎ WITHIN 0.003" SURFACES TO BE ⊥ OR // WITHIN 0.001" CHAMFER FIRST THREAD 45° ALL SURFACES		CHECKED BY	Freeman Mfg and Supply 1101 Moore Road Avon, OH 44011	
		CHECKED DATE	TITLE: Centerline Block, Large Red	
		<b>PROPRIETARY AND CONFIDENTIAL</b> THE INFORMATION CONTAINED IN THIS DRAWING IS THE SOLE PROPERTY OF COMPANY NAME. ANY REPRODUCTION IN PART OR AS A WHOLE WITHOUT THE WRITTEN PERMISSION OF COMPANY NAME IS PROHIBITED.		REV
MATERIAL Nylon 6/6, Red		SIZE <b>B</b>	PART NO. <b>FM-CBLR</b>	
FINISH		SCALE: 2:1	SHEET 1 OF 1	

GENERAL NOTE: IF PART IS NOT FULLY-DEFINED, DEFER TO 3-D CAD DATA. ASSUME ALL FEATURES ARE ±0.005 TO NOMINAL SIZE UNLESS SPECIFIED DIFFERENTLY HERE.