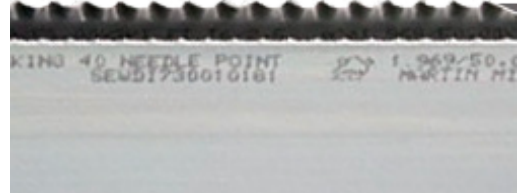


Martin Miller Stripping Rule

Description

Martin Miller® Stripping Rule is an ideal rule for ejecting waste material after die-cutting.



Physical Properties

Hardness	~270-380 HV
Bevel	Center (Edge angle: 54°)
Point Thickness	3
Height	45, 50, 55, 65mm
Wave Spacing	6:2, 6:2.5, 6:3, 8:3, 10:4.5, 12:6mm
Needle Point Spacing / Tooth Depth	5, 6mm / 0.5, 1mm

Availability & Ordering Information

Steel rule is available in four bevel profiles:

- Center Bevel
- Long Center Bevel
- Side Bevel
- Long Side Bevel

Martin Miller Stripping Rule is available in four bevel finishes:

- Cut Edge
- Shaved
- Needle Point
- Wave

Martin Miller Stripping Rule is sold in meter strips only.

The user shall determine the suitability of this product for their application and assumes all risks and liabilities associated with the use of this product. The exclusive remedy for all proven claims is replacement of our materials only and in no events shall Freeman Mfg. & Supply Co. be liable for special, incidental, or consequential claims.

READ SAFETY DATA SHEETS AND PRODUCT LABELS BEFORE USING PRODUCT