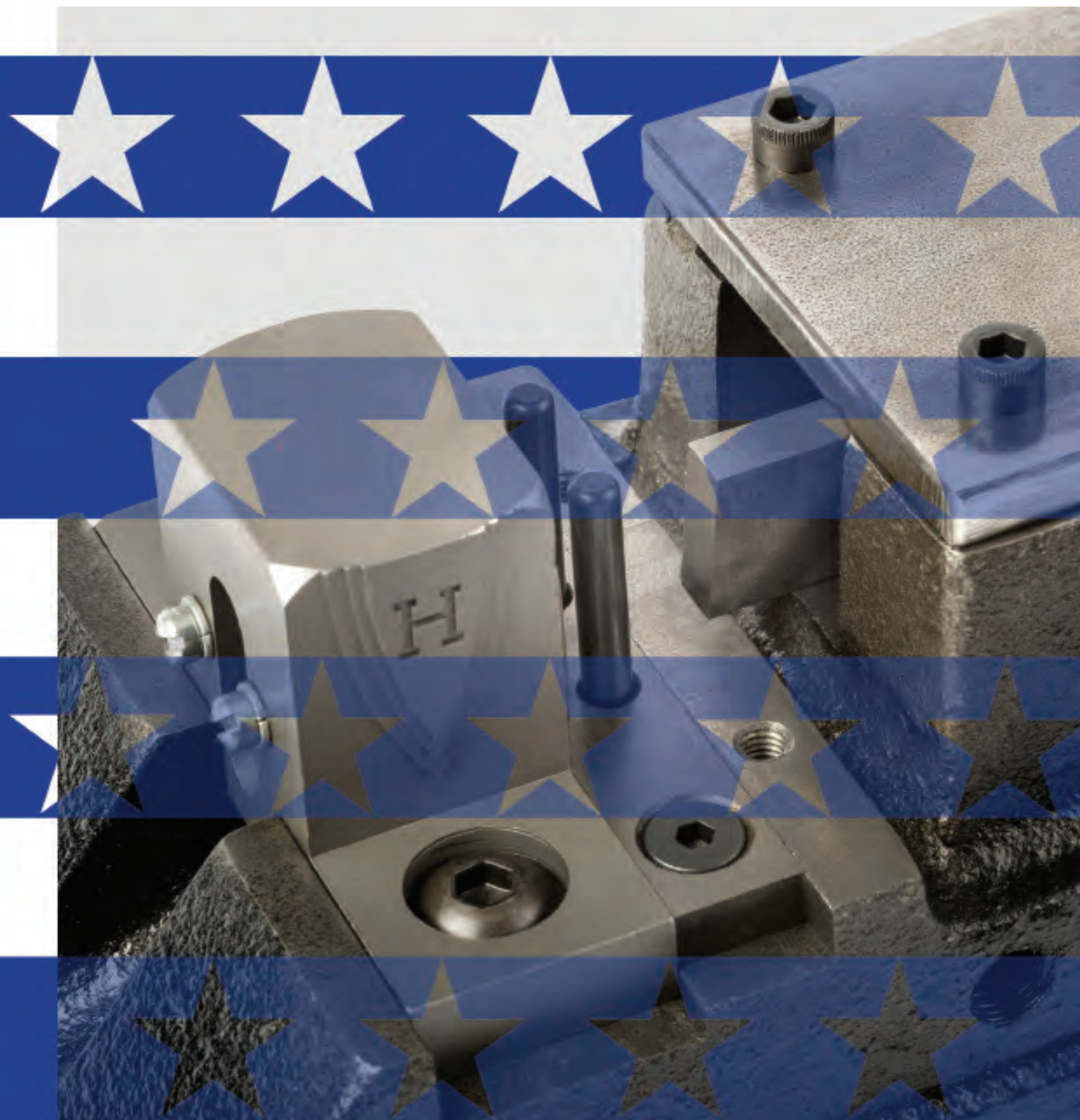


EQUIPMENT SERIES



TRADITION CONTINUES...

To better serve the North American market: sales, warehouse, and production functions have been centralized to offer best application consulting in combination with tailor-made steel rule products and our well-known die-making equipment.



TABLE OF CONTENTS

- Bender Series and Accessories** Pages 5 – 12
 - Bender Series Page 6
 - Starter Kits Page 7
 - Standard Dies Pages 8 – 9
 - Special “M” Series Dies Page 10
 - Mandrel Sets and Slot Tools Pages 11 – 12
- Cutting, Miter, and Notching Series** Pages 13 – 16
 - Cutter Series Page 14
 - Miter Series Page 15
 - Notching Series Page 16
- Cutawl Saw and Power Assist Series** Pages 17 – 19
 - Cutawl Saw Page 18
 - Power Assist Series Page 19
- Replacement Parts and Drawings** Pages 20 – 28



CONTACT AND SALES INFORMATION

INSIDE SALES

Phone: 1-800-344-7138

Adam Brewster – Inside Sales Manager
adam.brewster@voestalpine.com

Dee Berardinelli – Inside Sales
dee.berardinelli@voestalpine.com

Chad Sledz – Inside Sales
chad.sledz@voestalpine.com

OUTSIDE SALES

Steve Young – Sales Director
steve.young@voestalpine.com

Josh Jones – Technical Manager
josh.jones@voestalpine.com

Harold Burkhart – Midwest Sales
harold.burkhart@voestalpine.com

James Gossage – South East Sales
james.gossage@voestalpine.com

www.helmold.com

BENDER SERIES & ACCESSORIES



BENDER SERIES



| | |
|-----------------------------|-------------------------|
| Model: | EZ Bender Bendall |
| Maximum pointage | 3 point |
| Maximum height | 1" / 25.4 mm |
| Machine size (LxWxH) | 30.5" x 4.375" x 6.750" |
| Shipping Size | 44" x 8" x 8" |
| Net weight | 46 lbs. |
| Shipping weight | 69 lbs. |

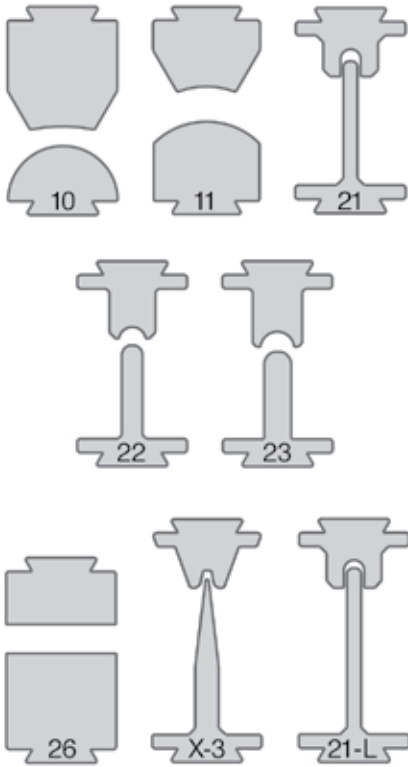


| | |
|-----------------------------|----------------------|
| Model: | EZ Heavy Duty Bender |
| Maximum pointage | 6 point |
| Maximum height | 2" / 50.8 mm |
| Machine size (LxWxH) | 40" x 5" x 6" |
| Shipping Size | 44" x 8" x 8" |
| Net weight | 50 lbs. |
| Shipping weight | 72 lbs. |

AVAILABLE STARTER KITS

Our starter kits include the most frequently used bending die sets.

Bending dies are available in 1", 1-1/4", 1-1/2", & 2"



Most Common Accessories in Corrugated Die Shops

Fractional Slot-Bending Die Sets



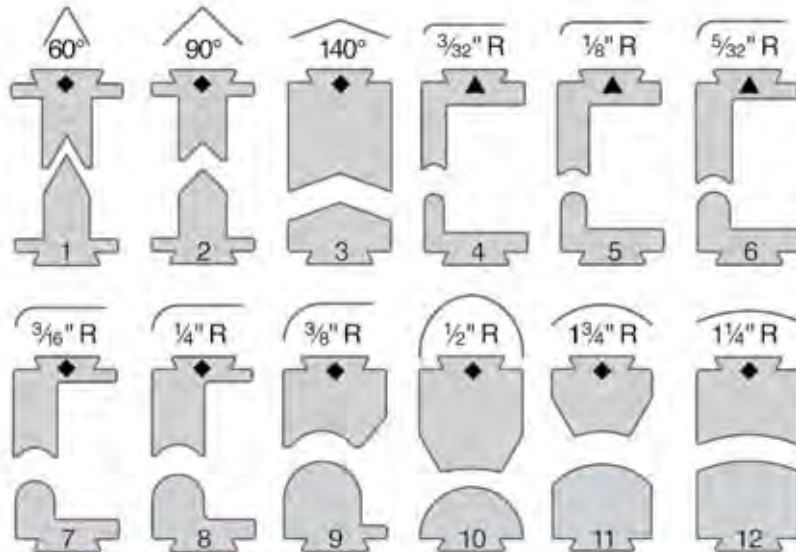
Specifications for slot tools and mandrels:
 Available in 1/8" to 9/16" in 1/16" increments
 C = 4pt Center Face
 F = 3pt Center Face
 R = 4pt Side Face

Most Common Accessories in Folding Carton Die Shops Die Sets



STANDARD DIES FOR HELMOLD RULE BENDERS

All standard dies shown are made for 2pt rule.

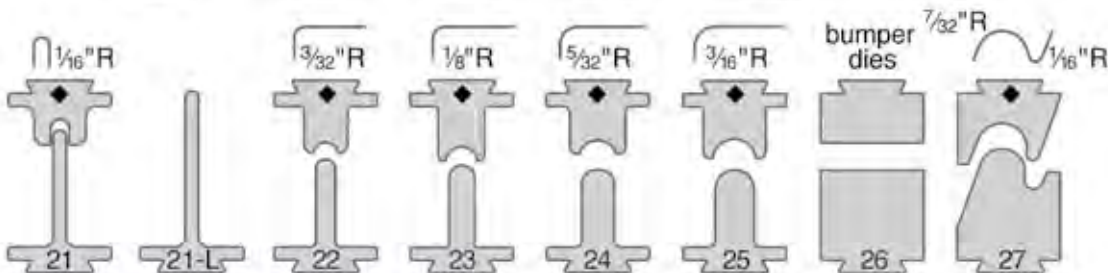
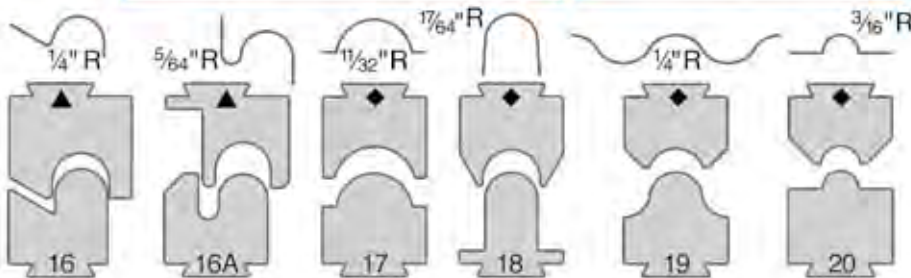
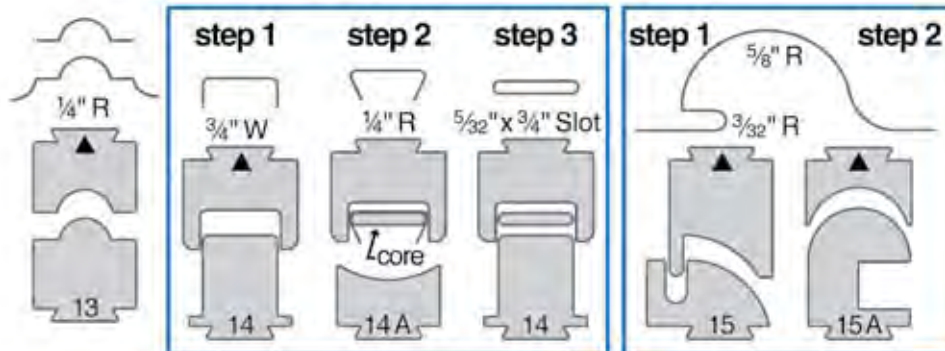


Legend

All standard dies shown in this catalog are for 2 pt. rule. The following symbols indicate those dies which can be opened up for thicker rule. Dies not marked with any symbol cannot be opened up to accommodate thicker rule.

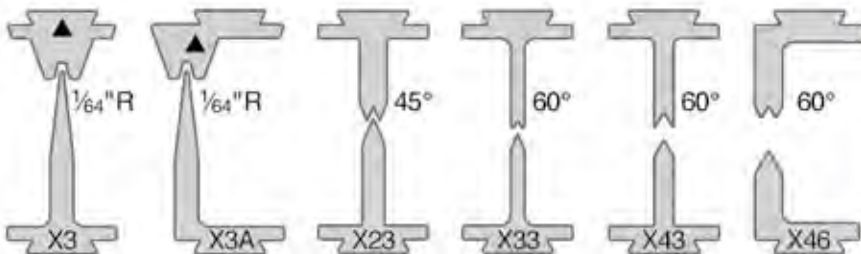
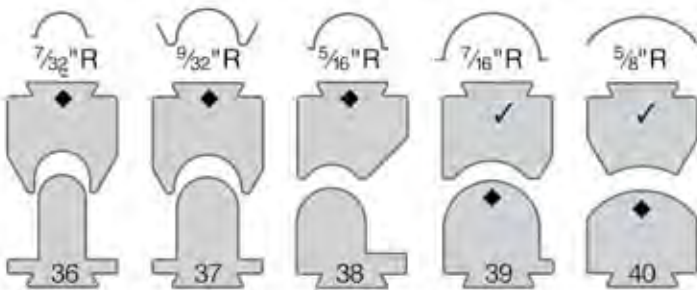
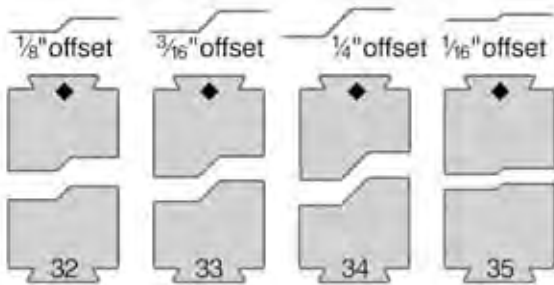
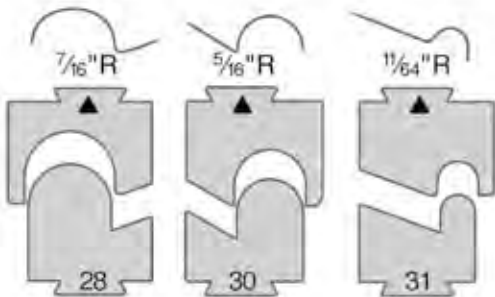
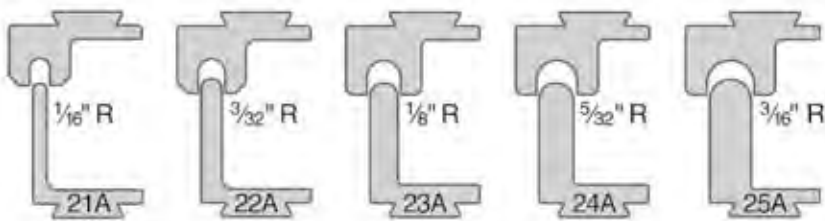
◆ = These dies can be opened up for 3 or 4 pt. rule.

▲ = These dies can be opened up for 3 pt. rule only.



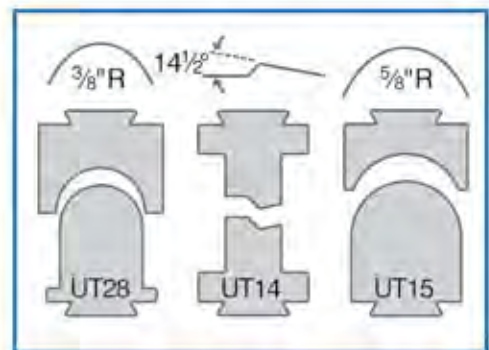
These illustrations are only for approximate shape and are not to true size.

STANDARD DIES FOR HELMOLD RULE BENDERS



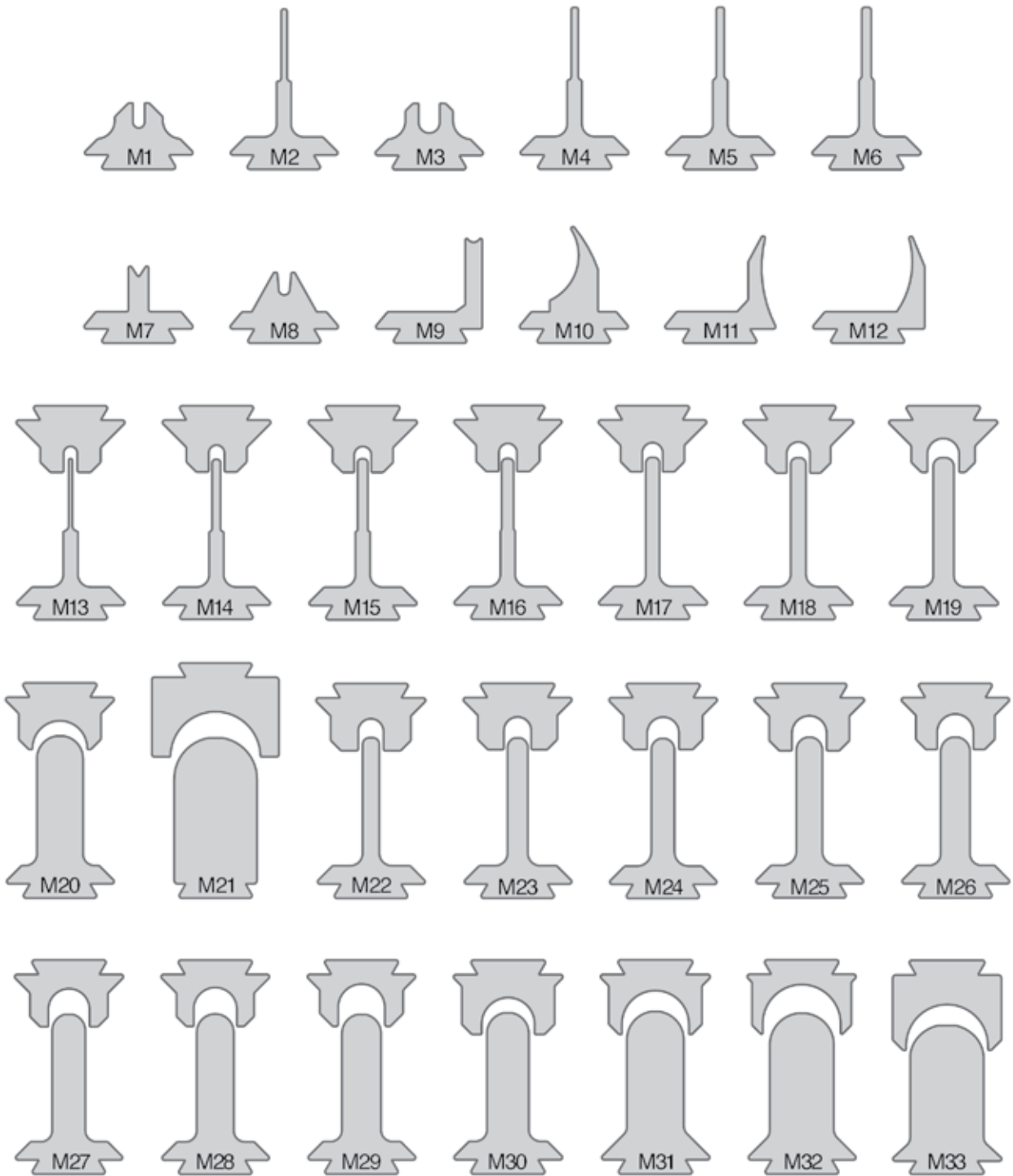
Offsets for Die #35

- 352 – bends 2pt rule to a 2pt offset
- 353 – bends 2pt rule to a 3pt offset
- 354 – bends 2pt rule to a 4pt offset
- 356 – bends 2pt rule to a 6pt offset



These illustrations are only for approximate shape and are not to true size.

SPECIAL "M" SERIES DIES FOR HELMOLD RULE BENDERS



MANDREL SETS, SLOT TOOLS, & DIMPLE DIE

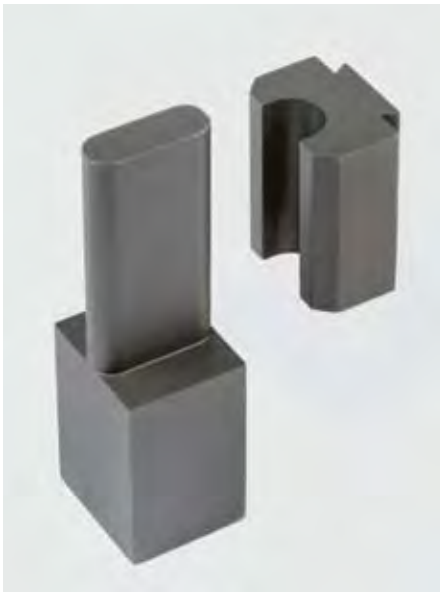


Special Mandrel Sets

- For forming long, narrow slots
- For 2pt. rule.
- Fits E-Z Heavy Duty Bender and Bendall. Specify 1", 1-1/4", 1-1/2" & 2" rule height. Requires a dovetail extension and rear support post.
- 365 sets for 3pt., 65 temper rule, bending sets are available in 3/16", 1/4", 5/16" and 3/8" diameters.

| Mandrel Diameter (adapter, support, and bushing included) | 1/16" | 1/8" | 3/16" | 1/4" | 5/16" | 3/8" |
|--|-------|------|-------|------|-------|------|
| Female Die Number | X-3B | 21B | 22B | 23B | 24B | 25B |

Complete sets shown above



One Piece Slot Tool

- Fits Heavy Duty Bender and E-Z Heavy Duty Bender for rule 1-1/4", 1-1/2", 2" high.
- For 3 and 4 point rotary rule.

• Order the following sizes as indicated. Specifications for slot tools and mandrels:
Available in 1/8" to 9/16" in 1/16" increments
C = 4pt Center Face
F = 3pt Center Face
R = 4pt Side Face



DIMPLE DIES

- Dies fits all Helms benders.
- Produces consistent "dimples" in rule, compensating for loose kerf.
- Easily replaceable, long wearing dimple pin.
- Male die is for 2, 3, or 4pt.
- Female: Specify for 2, 3, or 4pt.

MANDREL ACCESSORIES

The accessories on this page are designed to help users perform bends not possible when using standard dies sets.



Female Die Number



• Specify your rule height: 1", 1-1/4", 1-1/2", & 2".

Mandrel Set (for use in the following suggested combinations)

| Mandrel Diameter | 5/8" | | | | | 9/16"* | 7/16" | |
|-----------------------------------|--------|----------|------|--------|------|---------|------------------|------------------|
| Sleeve (required and included) | 1" | 5/16" | 7/8" | 13/16" | 3/4" | 1-1/16" | bushing included | bushing included |
| Female Die Number | 10, 37 | UT28, 37 | | | | 17, 37 | 37 | 36 |

* When used with a rear support post and link are required.



Mandrel and Sleeve Set

- When combined with the standard bender accessories shown above, a complete set from 3/16" to 1" by sixteenths is obtained.
- Fits E-Z Bender Bendall (1" high rule only).
- Fits E-Z Heavy Duty Bender Specify your rule height: 1", 1-1/4", 1-1/2", & 2". Requires a mandrel adapter, dovetail extension, eccentric back post and links.

CUTTING, MITER, & NOTCHING SERIES



CUTTER SERIES



| | |
|------------------|----------------------------|
| Model: | 1-1/2" Helmold rule cutter |
| Maximum pointage | 6 point |
| Maximum height | 1-1/2" / 38.1 mm |
| Machine size | 28" x 4" x 7.750" |
| Shipping Size | 31" x 7" x 11" |
| Net weight | 27 lbs. |
| Shipping weight | 42 lbs. |



| | |
|------------------|----------------------------|
| Model: | 2-1/8" Helmold rule cutter |
| Maximum pointage | 6 point |
| Maximum height | 2-1/8" / 53.97mm |
| Machine size | 28" x 4" x 7.750" |
| Shipping Size | 31" x 7" x 11" |
| Net weight | 27 lbs. |
| Shipping weight | 42 lbs. |

| | |
|------------------|----------------------------|
| Model: | 2-7/8" Helmold rule cutter |
| Maximum pointage | 6 point |
| Maximum height | 2-3/4" / 73.02 mm |
| Machine size | 28" x 4" x 7.750" |
| Shipping Size | 31" x 7" x 11" |
| Net weight | 27 lbs. |
| Shipping weight | 42 lbs. |

- Equipped with front and rear gauges graduated by sixteenths
- The front gauge cuts up to 6"
- The long back gauge cuts up to 24"

The knives on these tools are removable for sharpening at Helmold.

MITER SERIES



| | |
|------------------|------------------------|
| Model: | Single Miter Machine |
| Maximum pointage | 3 point |
| Maximum height | .937 |
| Miter bevels | 42, 53, or 60 degrees |
| Machine size | 29.5" x 4.125" x 5.25" |
| Shipping Size | 31" x 7" x 11" |
| Net weight | 32 lbs. |
| Shipping weight | 55 lbs. |

SHIM REQUIREMENTS

| | | | |
|--------------------------------|--------------------------------|--------------------------------|---------------|
| 2pt x .937 CF 0.937" height | 2pt x .923 CF 0.923" height | 2pt x .918 CF 0.918" height | 3pt x .937 CF |
| No shim needed | .014" shim | .019" shim | .007" shim |

The width of each female knife must be kept at 0.310". As the female knives are sharpened, shims are required between the sides of the female miter house and the outside vertical edges of the female knives to hold the 0.310" dimensions.



HELMOLD RIGHT AND LEFT HAND MITER MACHINE

| | |
|------------------|------------------------------|
| Model: | Right and Left Miter Machine |
| Maximum pointage | 3 point |
| Maximum height | .937 |
| Miter bevels | 42, 53, or 60 degrees |
| Machine size | 29.5" x 4.125" x 5.25" |
| Shipping Size | 31" x 7" x 11" |
| Net weight | 32 lbs. |
| Shipping weight | 55 lbs. |

The Helmold Right and Left Hand Miter Machine



Helmold recommends purchasing spare miter knives. This eliminates down time when sending knives to Helmold for sharpening.

NOTCHER SERIES



| | |
|----------------------------|--|
| Model: | Standard Notcher |
| Maximum thickness | 2 point |
| Standard notch size | 1/8" x 5/8", 1/4" x 5/8", 5/16" x 3/4" |
| Machine size | 37.25" x 4.75" x 6" |
| Shipping Size | 44" x 8" x 8" |
| Net weight | 47 lbs. |
| Shipping weight | 70 lbs. |

- The standard notcher is made with an adjustable link that allows the male knives to be re-set and adjusted after sharpening
- Can notch even if the rule is bent
- When ordering notcher specify Width x Height



| | |
|-----------------------------|---|
| Model: | Heavy Duty EZ Notcher |
| Maximum thickness | 4 point |
| Standard notch sizes | 1/8" x 5/8", 1/4" x 5/8", 5/16" x 3/4", 3/8" x 5/8", 1/2" x 1/2", 3/8" x 3/4", 1/2" x 5/8" |
| Machine size | 37" x 4.750" x 7.750" |
| Shipping Size | 44" x 7.125" x 8.250" |
| Net weight | 49 lbs. |
| Shipping weight | 72 lbs. |

- This machine can be modified to accommodate curved rule

The knives on these tools are removable for sharpening at Helmold.

CUTAWL SAW AND POWER ASSIST SERIES



CUTAWL SAW “THE DIEMAKER’S SAW”



| | |
|------------------------|---|
| Model: | K-12F Cutawl Saw |
| Thickness | 2, 3, and 4 point |
| Electric | 115V, 50-60 HZ Standard (Optional 220V 50-60 HZ) ** |
| Base | Flat |
| Machine size | 6" x 10.5" x 9.5" |
| Shipping Size | 14" x 10" x 12" |
| Net weight | 16 lbs. |
| Shipping weight | 21 lbs. |

| | |
|------------------------|---|
| Model: | K-12C Cutawl Saw |
| Thickness | 2, 3, and 4 point |
| Electric | 115V, 50-60 HZ Standard (Optional 220V 50-60 HZ) ** |
| Base | Curved (Specify 66" or 50") |
| Machine size | 6" x 10.5" x 10" |
| Shipping Size | 14" x 10" x 12" |
| Net weight | 16 lbs. |
| Shipping weight | 21 lbs. |

Current Cutawl Blades:

The high-speed, portable, precision saw specifically designed for making rotary and flat cutting dies. It cuts hard maple and birch dieboards quickly and easily. Straight lines, curves, or intricate patterns are simple to cut with the free floating 360 degree swivel head. The curved base plate for making rotary dies is of high quality, one-piece cast aluminum. The flat base is made of stainless steel.

** An optional Radio Frequency Interference Suppressor is available.

| Cutawl Blades | Pointage | Tooth Hight | Material Thickness | TPI |
|---------------|----------|-------------|--------------------|-----|
| 32 | 2 | 0.120 | 0.025 | 8 |
| 33 | 3 | 0.120 | 0.035 | 8 |
| 34 | 4 | 0.120 | 0.035 | 8 |
| 42 | 2 | 0.175 | 0.025 | 10 |
| 43 | 3 | 0.175 | 0.035 | 10 |
| 44 | 4 | 0.175 | 0.035 | 10 |
| 44HD | 4 | 0.175 | 0.042 | 10 |
| 44HDL | 4 | 0.175 | 0.042 | 10 |

POWER-ASSISTED NOTCHER AND BENDER



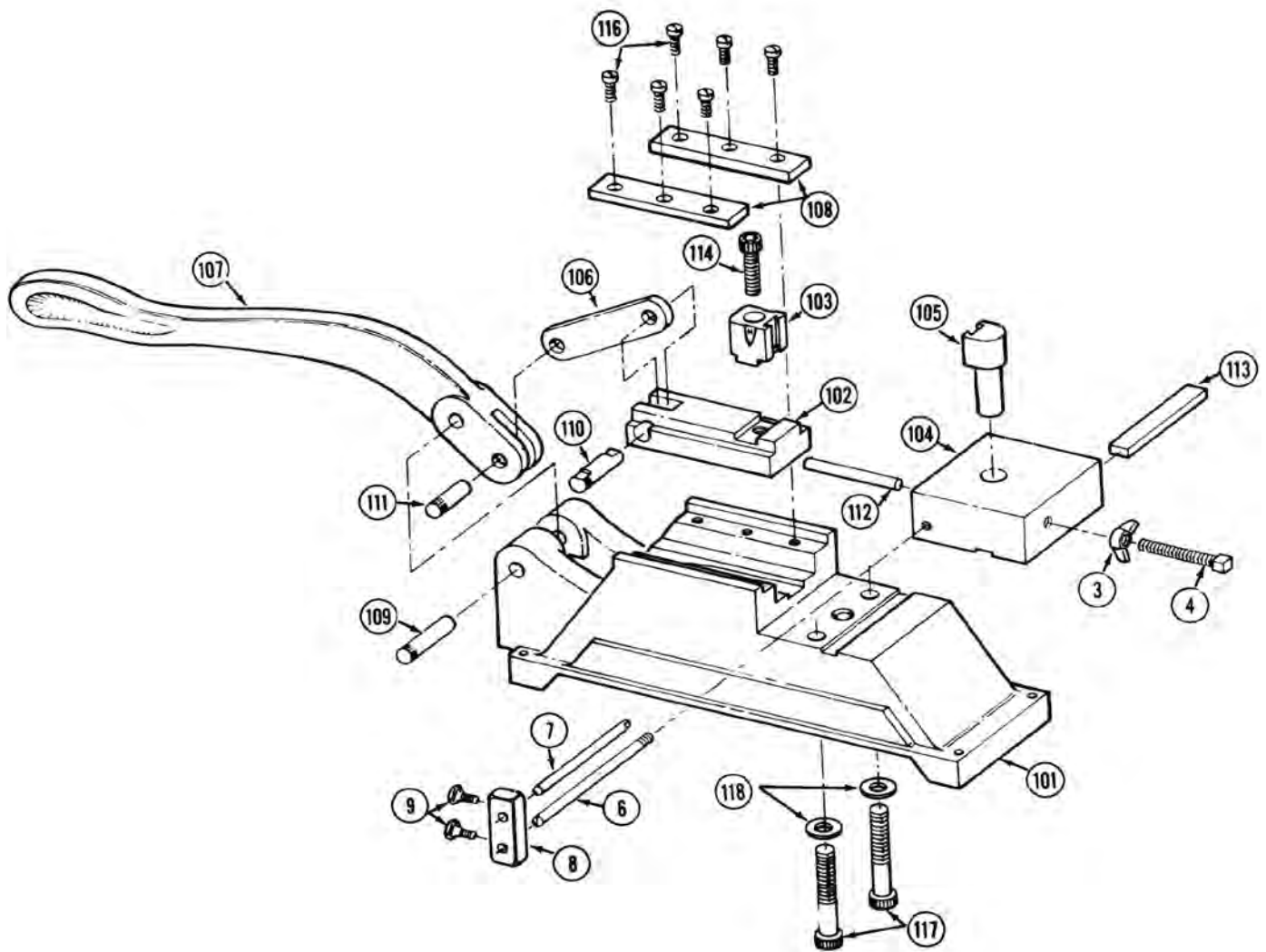
| | |
|-----------------------------|---|
| Model: | Power-Assisted Notcher |
| Maximum thickness | 6 point |
| Standard notch sizes | 1/8" x 5/8", 1/4" x 5/8", 5/16" x 3/4", 3/8" x 5/8", 1/2" x 1/2", 3/8" x 3/4", 1/2" x 5/8" |
| Machine size | 41" x 6.5" x 15" |
| Shipping Size | 46" x 25" x 19" |
| Net weight | 98 lbs. |
| Shipping weight | 150 lbs. |

The knives on these tools are removable for sharpening at Hel mold.



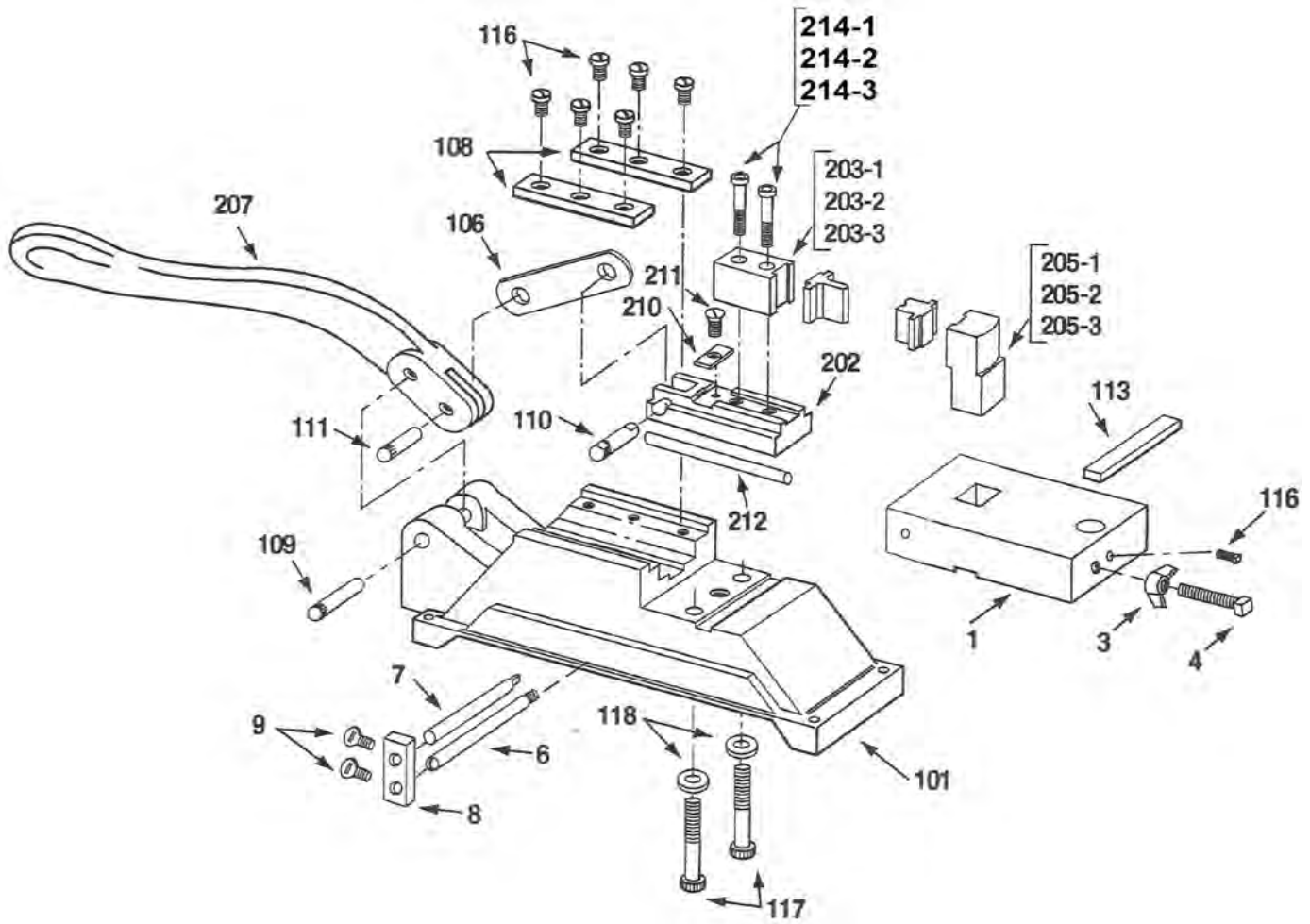
| | |
|--------------------------|-----------------------|
| Model: | Power-Assisted Bender |
| Maximum thickness | 6 point |
| Maximum Height | 2" / 50.8 mm |
| Machine size | 41" x 6.5" x 15" |
| Shipping Size | 46" x 25" x 19" |
| Net weight | 98 lbs. |
| Shipping weight | 150 lbs. |

STANDARD BENDER



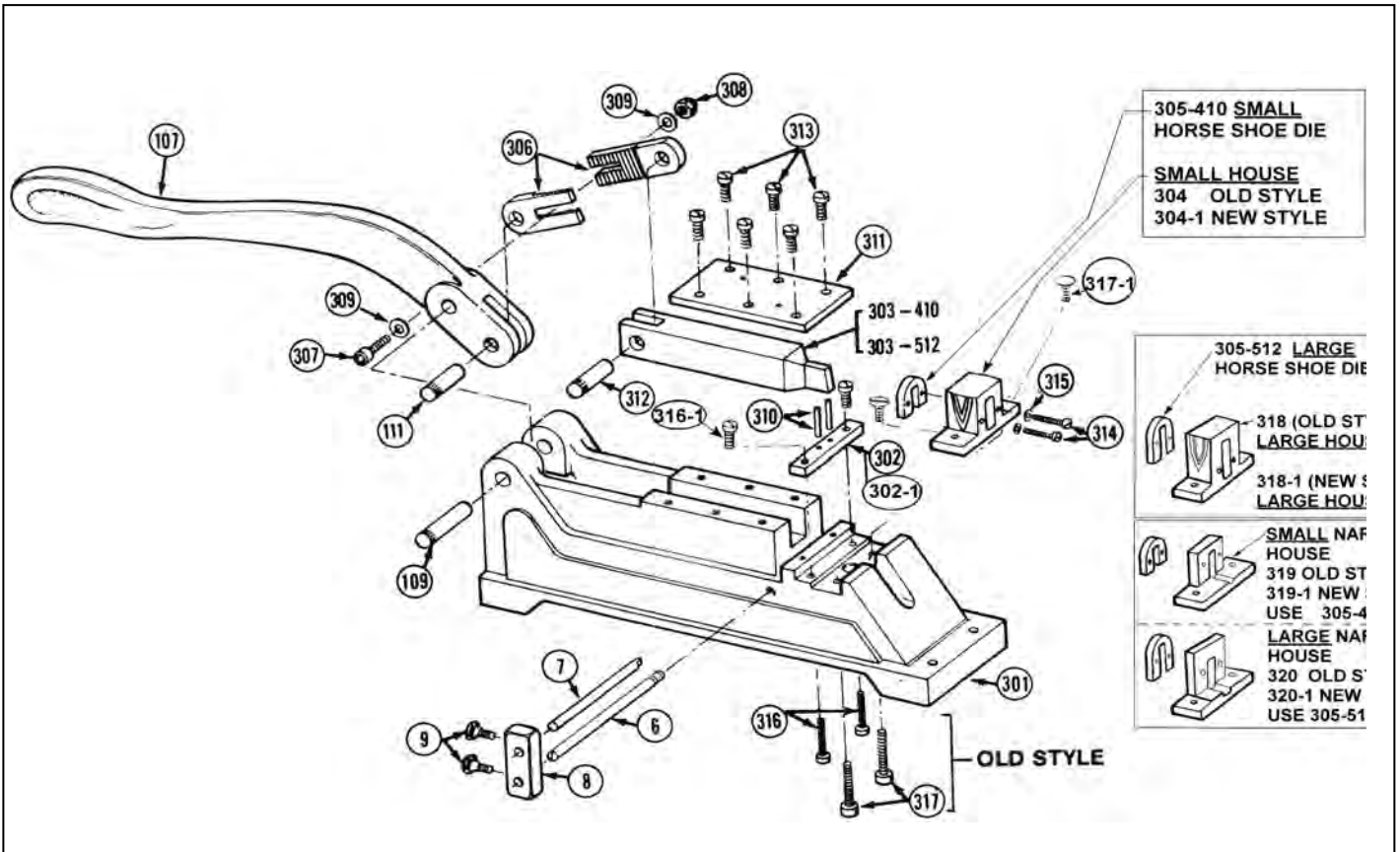
| CAT # | SAP # | QT/MACH | DESCRIPTION | NOTES |
|-------|----------|---------|--|--|
| 3 | 60005455 | 1 | 3/8 - 16 WING NUT | 60005455 (3/8 - 16 Zink Plated Plain Steel Wing Nut) |
| 4 | 60000243 | 1 | 3/8-16 x 2.75" SET SCREW | 60000243 (SQ HD SET SCREW 3/8-16 x 2.75) |
| 6 | 60000245 | 1 | BASE ROD | |
| 7 | 60000246 | 1 | GAUGE ROD | |
| 8 | 60000247 | 1 | ROD HOLDER | |
| 9 | 60005255 | 2 | 1/4 - 20 THUMB SCREW | 60005255 (Spade-Head Thumb Screws 1/4-20 x 1/2) |
| 101 | 60000258 | 1 | BODY | |
| 102 | 60000259 | 1 | SLIDING BLOCK BENDER STD | |
| 103 | 60000954 | 1 | FRONT DOVETAIL POST 1" | |
| 104 | 60000260 | 1 | BACK BLOCK STD BENDER | |
| 105 | 60000955 | 1 | BACK DOVETAIL POST for STANDARD BENDER | |
| 106 | 60000956 | 1 | SOLID LINK | |
| 107 | 60000261 | 1 | STANDARD HANDLE | |
| 108 | 60000957 | 2 | HOLD DOWN PLATES | |
| 109 | 60000262 | 1 | ROUND KNURLED PIN | |
| 110 | 60000958 | 1 | FLAT KNURLED PIN | |
| 111 | 60000263 | 1 | EQ P B/N/C/M SHORT PIN | |
| 112 | 60000264 | 1 | STOP PIN- STANDARD BENDER | |
| 113 | 60000265 | 1 | KEY | |
| 114 | 60000954 | 1 | BENDER FRONT D/T POST ALLEN BOLT | 60000266 (Socket HD Cap Scr 7/16-20 X 1.5) |
| 116 | 60005302 | 6 | FILLISTER HEAD SCREW 1/4-20 X 1/2 | 60005302 (Fillister Head machine screw 1/4-20 x 1/2) |
| 117 | 60000267 | 2 | BODY TO BACK BLOCK BOLT | 60000267 (Socket HD Cap Screw 7/16-14 X 2.75) |
| 118 | 60000268 | 2 | ALLEN BOLT WASHER | 60000268 (7/16 Common Washers) |

HEAVY DUTY BENDER



| CAT # | SAP # | QT/MACH | DESCRIPTION | NOTES |
|-------|----------|---------|--------------------------------------|--|
| 1 | 60000951 | 1 | BACK BLOCK ASSEMBLY | Combines 1-1,1-2,and 1-3 into one part 60005455 (3/8 - 16 Zink Plated Plain Steel Wing Nut) 60000243 9 (3/8-16 x 2.75 Sq. Hd. set screw) |
| 3 | 60005455 | 1 | EQ P BENDER WING NUT | |
| 4 | 50000243 | 1 | SET SCREW | |
| 6 | 60000245 | 1 | BASE ROD | |
| 7 | 60000246 | 1 | GAUGE ROD | |
| 8 | 60000247 | 1 | ROD HOLDER | |
| 9 | 60005255 | 2 | 1/4 - 20 THUMB SCREW | 60005255 (Spade-Head Thumb Screws 1/4-20 x 1/2) |
| 101 | 60000258 | 1 | BODY | |
| 106 | 60000956 | 1 | SOLID LINK | |
| 108 | 60000957 | 2 | HOLD DOWN PLATES | |
| 109 | 60000262 | 1 | ROUND KNURLED PIN | |
| 110 | 60000958 | 1 | FLAT KNURLED PIN | |
| 111 | 60000263 | 1 | EQ P B/N/C/M SHORT PIN | |
| 113 | 60000265 | 1 | KEY | |
| 116 | 60005302 | 7 | FILLISTER HEAD SCREW 1/4-20 x 1/2 | 60005302 (Fillister Head machine screw 1/4-20 x 1/2) |
| 117 | 60000267 | 2 | BODY TO BACK BLOCK BOLT | 60000267 (Socket HD Cap screw 7/16-14 X 2 3/4) |
| 118 | 60000268 | 2 | ALLEN BOLT WASHER | 60000268 (7/16 Common Washers) |
| 202 | 60000270 | 1 | SLIDING BLOCK - HEAVY DUTY BENDER | |
| 207 | 60000961 | 1 | HEAVY DUTY HANDLE | |
| 210 | 60000962 | 1 | MALE BACK UP BLOCK | |
| 211 | 60000274 | 1 | HOLD DOWN SCREW | 60000274 (10-32 x 1/2 Flat hd screw) |
| 212 | 60000979 | 1 | STOP PIN | |
| 203-1 | 60000989 | 1 | FRONT DOVETAIL POST 1.250 | |
| 203-2 | 60000271 | 1 | FRONT DOVETAIL DIEHOLDER 1.500 | |
| 203-3 | 60000272 | 1 | FRONT DOVETAIL DIEHOLDER 2.000 | |
| 205-1 | 60001078 | 1 | BACK REMOVABLE DIEHOLDER 1.250 | |
| 205-2 | 60001117 | 1 | BACK REMOVABLE DIEHOLDER 1.500 | |
| 205-3 | 60000273 | 1 | BACK REMOVABLE DIEHOLDER 2.000 | |
| 214-1 | 60000276 | 2 | FRONT DOVETAIL POST ALLEN BOLT 1.250 | |
| 214-2 | 60000277 | 2 | FRONT DOVETAIL POST ALLEN BOLT 1.500 | |
| 214-3 | 60000278 | 2 | FRONT DOVETAIL POST ALLEN BOLT 2.000 | |

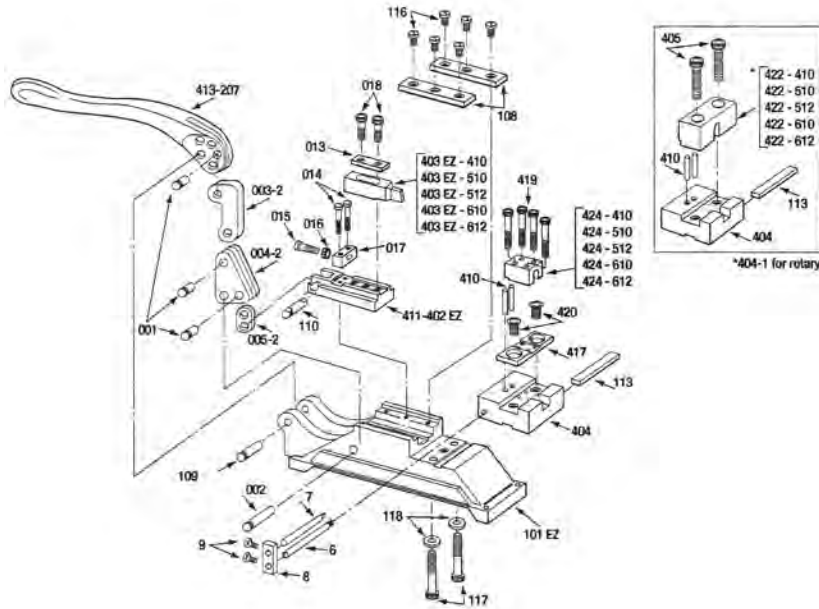
STANDARD HELMOLD NOTCHER



| CAT # | SAP # | QT/MACH | DESCRIPTION | NOTES |
|---------|----------|---------|-------------------------------------|---|
| 6 | 60000245 | 1 | BASE ROD | |
| 7 | 60000246 | 1 | GAUGE ROD | |
| 8 | 60000247 | 1 | ROD HOLDER | |
| 9 | 60005255 | 2 | 1/4 - 20 THUMB SCREW | 60005255 (Spade-Head Thumb Screws 1/4-20 x 1/2) |
| 107 | 60000261 | 1 | STANDARD HANDLE | |
| 109 | 60000262 | 1 | ROUND KNURLED PIN | |
| 111 | 60000263 | 1 | SHORT PIN | |
| 301 | 60000284 | 1 | BODY FOR STD. NOTCHER & MITER | |
| 302 | 60001079 | 1 | WEAR PLATE - OLD STYLE | |
| 304 | 60001120 | 1 | OLD STYLE FEMALE HOUSE 1/4 X 5/8 | |
| 306 | - | X | SOLD AS A LINK ASSEMBLY | 60000288 |
| 307 | - | X | SOLD AS A LINK ASSEMBLY | 60000289 (1/4-20 x 3/4 socket hd cap screw) |
| 308 | - | X | SOLD AS A LINK ASSEMBLY | 60000290 (1/4-20 NYLON-INSERT LOCKNUT) |
| 309 | - | X | SOLD AS A LINK ASSEMBLY | 60000291 (1/4 plain washer,zink plated) |
| 310 | 60005493 | 2 | STRIPPER PIN | |
| 311 | 60000292 | 1 | COVER PLATE | |
| 312 | 60000293 | 1 | STANDARD MALE KNURLED PIN | |
| 313 | 60000294 | 6 | Cover Plate Allen Bolts 10-32 x .50 | 60000294 (10-32 x 1/2 Socket Hd Cap Screw) |
| 314 | 60005299 | 2 | House to Female Knife Screws | 60005299 (6-32 x 1 1/8 Fillister Hd cap screw) |
| 315 | 60000295 | 2 | House Washers | 60000295 (#6 split lock washer) |
| 316 | 60000296 | 2 | BODY TO WEAR PLATE SCREWS | |
| 317 | 60005495 | 2 | BODY TO HOUSE SCREWS | 60000297 5/16"-18 X 7/8" SOC HD CAP SCREW |
| 318 | 60000298 | 1 | OLD FEMALE HOUSE 5/16 X 3/4 | |
| 319 | xxxxxx | | Small Narrow House - old style | |
| 320 | 60001119 | | Large Narrow House - old style | |
| 302-1 | 60000285 | 1 | WEAR PLATE- NEW STYLE | |
| 304-1 | 60000286 | 1 | NEW FEMALE HOUSE 1/4 X 5/8 | |
| 317-1 | 60005495 | | BODY TO HOUSE SCREWS | 60002166 (5/16 dia x 3/4" Button hex hd cap scr.) |
| 318-1 | 60000299 | 1 | NEW FEMALE HOUSE 5/16 X 3/4 | |
| 319-1 | 60001118 | | Small Narrow House - new style | |
| 320-1 | 60000287 | | Large Narrow House - new style | |
| 406 SET | 60002548 | 1 | ADJ LINK ASSMBLY | MADE UP OF 306, 307, 308, 309 |
| 316-1 | 60005494 | 2 | Socket Flat hd screw | 10-32- x 1/2" |
| 303-410 | 60000315 | 1 | MALE KNIFE 1/4 X 5/8 | |
| 303-512 | 60001383 | 1 | MALE KNIFE 5/16 X 3/4 | |
| 305-410 | 60000307 | 1 | FEMALE KNIFE 1/4 X 5/8 | Outside Width of die .760" |
| 305-512 | 60001403 | 1 | FEMALE KNIFE 5/16 X 3/4 | Outside Width of die .885" |

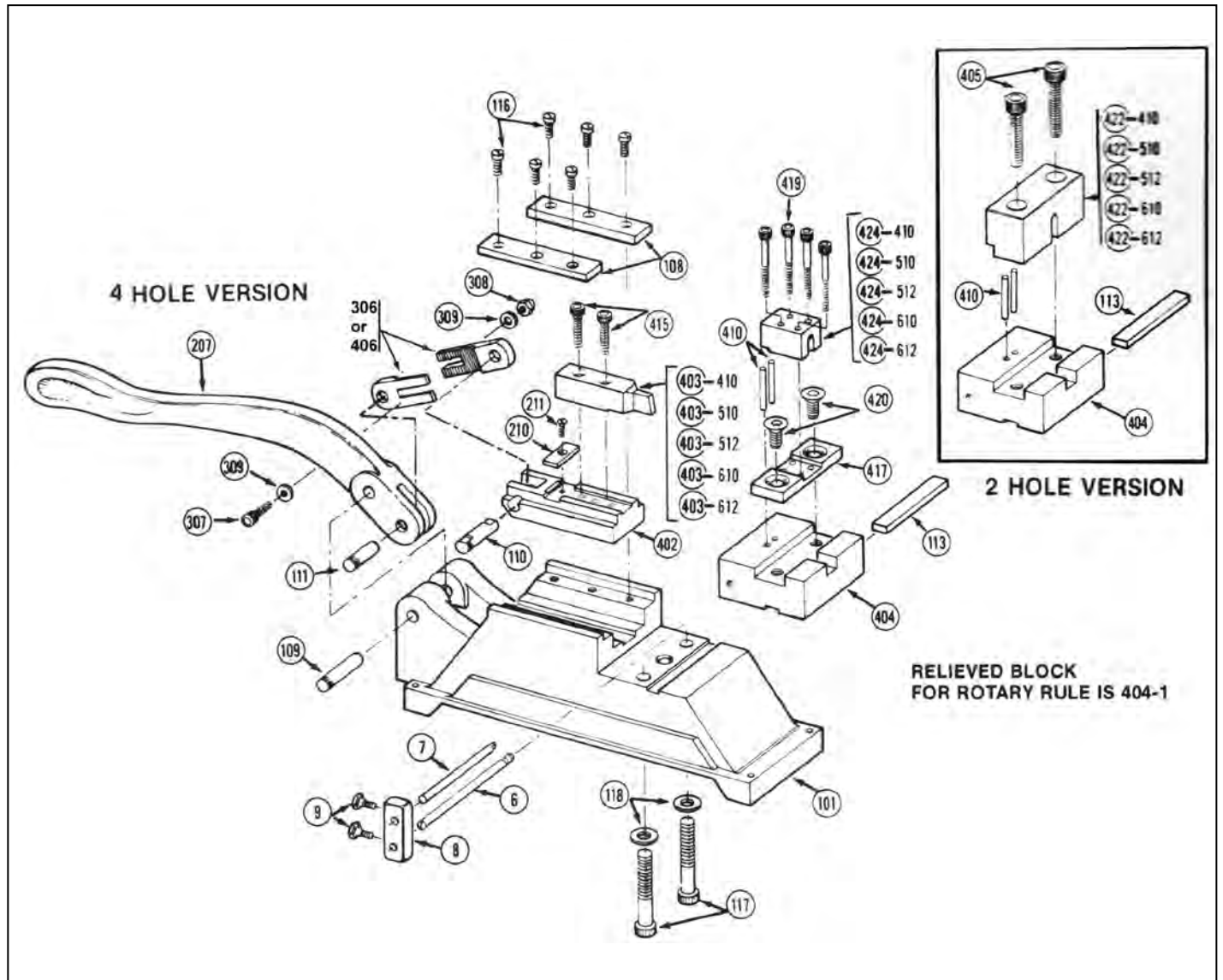
- OLD STYLE machine have house and wear plate mounting screws inserted from the bottom of the machine
- NEW STYLE machines have house and wear plate mounting screws inserted from the top of the machine.
- Notch die that are 1/4" and wider OR 5/8" and higher require large size house and die

EZ NOTCHER



| CAT # | SAP # | QT/MACH | DESCRIPTION | NOTES |
|------------|----------|---------|--|---|
| 1 | 60000263 | 3 | Knurled Pin | |
| 2 | 60000976 | 1 | Knurled Pin | |
| 6 | 60000245 | 1 | BASE ROD | |
| 7 | 60000246 | 1 | GAUGE ROD | |
| 8 | 60000247 | 1 | ROD HOLDER | |
| 9 | 60005255 | 2 | 1/4 - 20 THUMB SCREW | 60005255 (Spade-Head Thumb Screws 1/4-20 x 1/2) |
| 013 | 60000972 | 1 | Washer Plate | |
| 014 | - | 2 | Socket HD Cap Screw(Hold Down) | 60005460 (1/4 - 20 x 1.25" Socket HD Cap Screw) |
| 015 | - | 1 | Socket Hd Cap Scr. (Adj Scr Male Knife) | 60005461 (3/8-16 x 1.5 Socket Hd Cap Scr.) |
| 016 | 60005462 | 1 | Nut | 60005462 (3/8 - 16 Grade 5 Nut-Black Oxide finish) |
| 017 | 60000973 | 1 | EZ NOTCH ADJUSTABLE MALE BACK UP BLOCK | |
| 018 | 60000022 | 2 | Socket HD Cap Scr. | 60005389 (5/16 -18 x 2" Socket HD Cap Scr) |
| 108 | 60000957 | 2 | Hold Down Plates | |
| 109 | 60000262 | 1 | Knurled Pin | 109-EZ / 60000988, Replaced by 109 |
| 110 | 60000958 | 1 | Knurled Pin (Flat) | 110-EZ / 60000987, Replaced by 110 |
| 113 | 60000625 | 1 | Key | |
| 116 | 60005302 | 7 | FILLISTER HEAD SCREW 1/4-20 X 1/2" | 60005302 (Fillister Head machine screw 1/4-20 x1/2) |
| 117 | 60000267 | 2 | 7/16-14 x 2 3/4" Body to Back Block Allen Bolt | 60000267 (Socket HD Cap screw 7/16-14 X 2.75) |
| 118 | - | 2 | 7/16 Plain Washer | 60000268 (7/16 Common Washers) |
| 405 | 60000297 | 2 | Female Allen Bolts | 60005298 (1/2 - 13 x 2" Socket HD Cap Screw) |
| 410 | 60000965 | 2 | Stripper Pins | |
| 417 | 60000966 | 1 | 4-Hole Female Die Holder Block | |
| 419 | - | 4 | 5/16 - 24 x 2.25 Socket HD Cap Scr. 4-Hole | 60000327 (5/16-24 x 2 1/4 Socket Hd Cap Screw) |
| 420 | - | 2 | 4-Hole Die Holder | 60005390 (1/2 - 13 x 1" Flat HD Cap Screw) |
| 003-2 | 60000860 | 1 | Link No. 1 Notcher Version | |
| 004-2 | 60000862 | 1 | Link No. 2 Notcher Version | |
| 005-2 | 60000864 | 1 | Link No. 3 Notcher Version | |
| 101-EZ | 60000985 | 1 | EZ BODY | |
| 411-402 EZ | 60001037 | 1 | EZ SLIDING BLOCK NOTCHER | |
| 413-207 | 60000869 | 1 | HEAVY DUTY HANDLE FOR EZ | |
| 403-410-EZ | 60000371 | | HD Male Knife 1/4" x 5/8" | |
| 403-510-EZ | 60000372 | | HD Male Knife 5/16" x 5/8" | |
| 403-512-EZ | 60000373 | | HD Male Knife 5/16" x 3/4" | |
| 403-610-EZ | 60000374 | | HD Male Knife 3/8" x 5/8" | |
| 403-612-EZ | 60000375 | | HD Male Knife 3/8" x 3/4" | |
| 403-808 | 60000998 | | HD Male Knife 1/2" x 1/2" | |
| 403-810 | 60000376 | | HD Male Knife 1/2" x 5/8" | |
| 404 | 60001914 | | Back Block - STD (Flat Rule) Notch width 1/2" and over | |
| 404 | 60000964 | | Back Block - STD (Flat Rule) Notch width 1/8" to 3/8" | |
| 404-1 | 60002591 | | Rotary Back Block Notch width 1/2" and over" | |
| 404-1 | 60000390 | | Rotary Back Block Notch width 1/8" to 3/8" | |
| 422-410 | 60000347 | | 2-Hole Female Knife 1/4" x 5/8" | |
| 422-510 | 60000348 | | 2-Hole Female Knife 5/16" x 5/8" | |
| 422-512 | 60000349 | | 2-Hole Female Knife 5/16" x 3/4" | |
| 422-610 | 60000350 | | 2-Hole Female Knife 3/8" x 5/8" | |
| 422-612 | 60000999 | | 2-Hole Female Knife 3/8" x 3/4" | |
| 403-808 | 60000364 | | 2-Hole Female Knife 1/2" x 1/2" | |
| 403-810 | 60000351 | | 2-Hole Female Knife 1/2" x 5/8" | |
| 424-410 | 60000352 | | 4-Hole Female Knife 1/4" x 3/8" | |
| 424-510 | 60000353 | | 4-Hole Female Knife 5/16" x 5/8" | |
| 424-512 | 60000354 | | 4-Hole Female Knife 5/16" x 3/4" | |
| 424-610 | 60000355 | | 4-Hole Female Knife 3/8" x 5/8" | |
| 424-612 | 60000356 | | 4-Hole Female Knife 3/8" x 3/4" | |

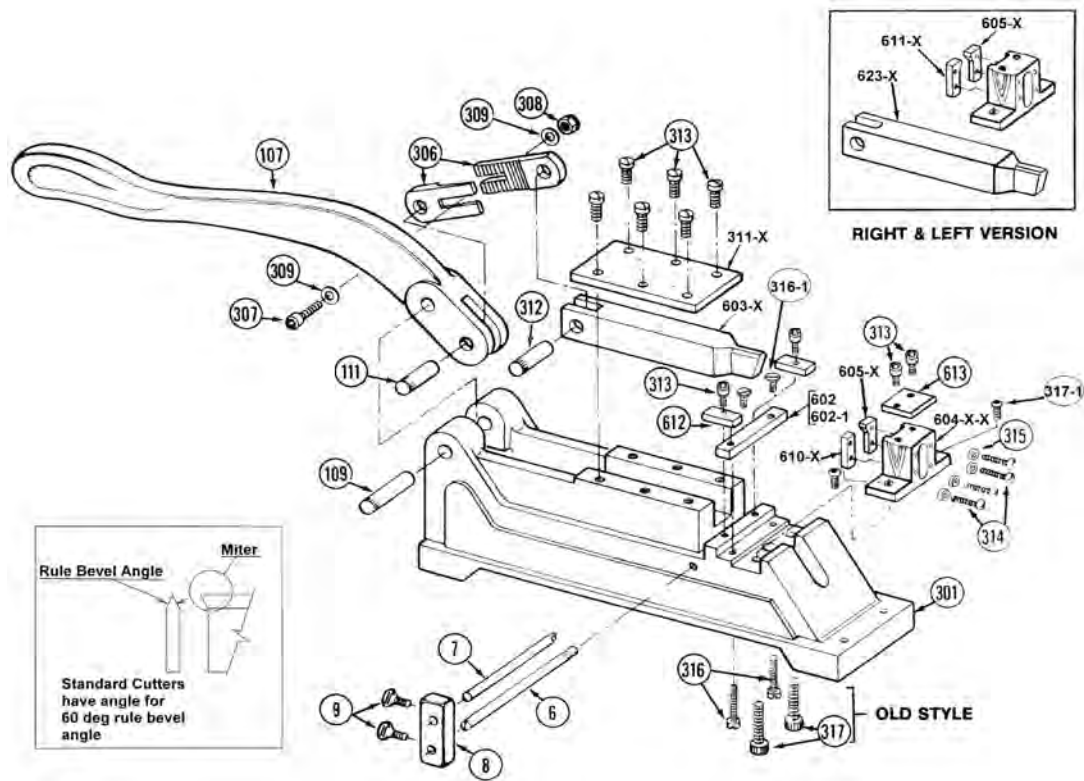
HEAVY DUTY NOTCHER



HEAVY DUTY NOTCHER

| CAT # | SAP # | QT/MACH | DESCRIPTION | NOTES |
|-------------|----------|---------|--|--|
| 6 | 60000245 | 1 | BASE ROD | |
| 7 | 60000246 | 1 | GAUGE ROD | |
| 8 | 60000247 | 1 | ROD HOLDER | |
| 9 | 60005255 | 2 | 1/4 - 20 THUMB SCREW | |
| | 60005255 | | (Spade-Head Thumb Screws 1/4-20 x 1/2) | |
| 101 | 60000258 | 1 | BODY | |
| 108 | 60000957 | 2 | HOLD DOWN PLATES | |
| 109 | 60000262 | 1 | ROUND KNURLED PIN | |
| 110 | 60000958 | 1 | FLAT KNURLED PIN | |
| 111 | 60000263 | 1 | SHORT PIN | |
| 113 | 60000265 | 1 | KEY | |
| 116 | 60005302 | 6 | FILLISTER HEAD SCREW 1/4-20 X 1/2 | 60005302 (Fillister Head machine screw 1/4-20 x 1/2) |
| 117 | 60000267 | 2 | BODY TO BACK BLOCK BOLT | 60000267 (Socket HD Cap screw 7/16-14 X 2.75) |
| 118 | 60000268 | 2 | ALLEN BOLT WASHER | 60000268 (7/16 Common Washers) |
| 207 | 60000961 | 1 | HEAVY DUTY HANDLE | |
| 210 | 60000962 | 1 | MALE BACK UP BLOCK | |
| 211 | 60000274 | 1 | HOLD DOWN SCREW | 60000274 (10-32 x .50 Flat hd screw) |
| 306 | - | X | SOLD AS A LINK ASSEMBLY | 60000288 LINK |
| 307 | - | X | SOLD AS A LINK ASSEMBLY | 60000289 (1/4-20 x 3/4 socket hd cap screw) |
| 308 | - | X | SOLD AS A LINK ASSEMBLY | 60000290 (1/4-20 NYLON-INSERT LOCKNUT) |
| 309 | - | X | SOLD AS A LINK ASSEMBLY | 60000291 (1/4 plain washer,zink plated) |
| 402 | 60000963 | 1 | HEAVY DUTY NOTCHER SLIDING BLOCK | |
| 405 | - | | Female Allen Bolts | 60005298 (1/2 - 13 x 2" Socket HD Cap Screw) |
| 406 | - | X | SOLD AS A LINK ASSEMBLY | 60000325 LINK |
| 410 | 60000965 | 2 | STRIPPER PIN 1/4 | |
| 415 | 60000326 | 2 | ALLEN BOLT FOR MALE NOTCH KNIFE | 60000326 (5/16-24 x 1 1/4 Socket Hd Cap screw) |
| 417 | 60000966 | 1 | 4-HOLE FEMALE KNIFE HOLDER BLOCK | 4 hole machine only |
| 419 | - | 4 | 4-HOLE FEMALE ALLEN BOLT | 60000327 (5/16-24 x 2 1/4 Socket Hd Cap screw) |
| 420 | 60005390 | 2 | EQ P NOTCHER EZ/HD 4-HOLE DH ALLEN BOLT | 4 hole machine only |
| Link ass'sy | 60002548 | | ADJ LINK ASSMBLY notchers 1/2 and wider | 2.3" link |
| | 60002549 | | ADJ LINK ASSMBLY notchers less than 1/2 wide | 2.6" link |
| 403-410 | 60000371 | | HD Male Knife 1/4" x 5/8" | |
| 403-510 | 60000372 | | HD Male Knife 5/16" x 5/8" | |
| | 60000387 | | HD Male Knife 5/16" x 11/16" | |
| 403-512 | 60000373 | | HD Male Knife 5/16" x 3/4" | |
| 403-610 | 60000374 | | HD Male Knife 3/8" x 5/8" | |
| 403-612 | 60000375 | | HD Male Knife 3/8" x 3/4" | |
| 403-808 | 60000998 | | HD Male Knife 1/2" x 1/2" | |
| 403-810 | 60000376 | | HD Male Knife 1/2" x 5/8" | |
| 404 | 60001914 | | Back Block - STD (Flat Rule) Notch width 1/2" and over | |
| | 60000964 | | Back Block - STD (Flat Rule) Notch width 1/8" to 3/8" | |
| 404-1 | 60002591 | | Rotary Back Block Notch width 1/2" and over | |
| | 60000390 | | Rotary Back Block Notch width 1/8" to 3/8" | |
| | 60005318 | | 35" DIA ROTARY - 1/2" +WIDE" | |
| 422-410 | 60000347 | | 2-Hole Female Knife 1/4" x 5/8" | |
| 422-510 | 60000348 | | 2-Hole Female Knife 5/16" x 5/8" | |
| 422-512 | 60000349 | | 2-Hole Female Knife 5/16" x 3/4" | |
| 422-610 | 60000350 | | 2-Hole Female Knife 3/8" x 5/8" | |
| 422-612 | 60000999 | | 2-Hole Female Knife 3/8" x 3/4" | |
| 403-808 | 60000364 | | 2-Hole Female Knife 1/2" x 1/2" | |
| 403-810 | 60000351 | | 2-Hole Female Knife 1/2" x 5/8" | |
| 424-410 | 60000352 | | 4-Hole Female Knife 1/4" x 3/8" | |
| 424-510 | 60000353 | | 4-Hole Female Knife 5/16" x 5/8" | |
| 424-512 | 60000354 | | 4-Hole Female Knife 5/16" x 3/4" | |
| 424-610 | 60000355 | | 4-Hole Female Knife 3/8" x 5/8" | |
| 424-612 | 60000356 | | 4-Hole Female Knife 3/8"x 3/4" | |

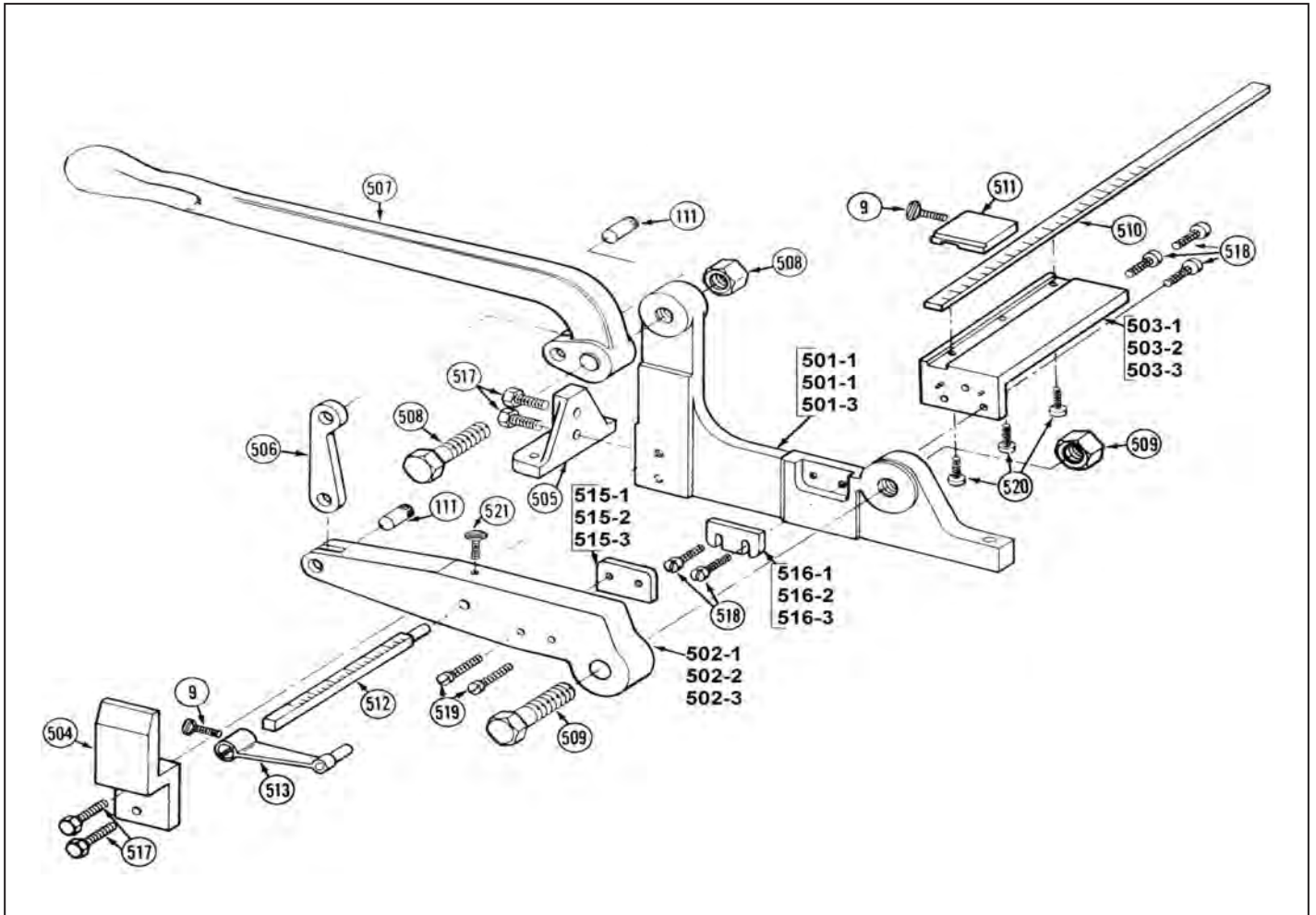
STANDARD MITER MACHINE



| CAT # | SAP # | QT/MACH | DESCRIPTION | NOTES |
|---------|----------|---------|--|---|
| 6 | 60000245 | 1 | BASE ROD | |
| 7 | 60000246 | 1 | GAUGE ROD | |
| 8 | 60000247 | 1 | ROD HOLDER | |
| 9 | 60005255 | 2 | 1/4 - 20 THUMB SCREW | 60005255 (Spade-Head Thumb Screws 1/4-20 x 1/2) |
| 107 | 60000261 | 1 | STANDARD HANDLE | |
| 109 | 60000262 | 1 | ROUND KNURLED PIN | |
| 111 | 60000263 | 1 | EQ P B/N/C/M SHORT PIN | |
| 301 | 60000284 | 1 | BODY FOR STD. NOTCHER & MITER | |
| 306 | - | X | SOLD AS A LINK ASSEMBLY | 60000288 |
| 307 | - | X | SOLD AS A LINK ASSEMBLY | 60000289 (1/4-20 x 3/4 socket hd cap screw) |
| 308 | - | X | SOLD AS A LINK ASSEMBLY | 60000290 (1/4-20 NYLON-INSERT LOCKNUT) |
| 309 | - | X | SOLD AS A LINK ASSEMBLY | 60000291 (1/4 plain washer,zink plated) |
| 311 | 60000292 | 1 | COVER PLATE | |
| 311-1 | 60002181 | 1 | COVER PLATE Relieved | For rule over 1" high |
| 312 | 60000293 | 1 | STANDARD MALE KNURLED PIN | |
| 313 | - | 8 | Cover Plate & Wear plate hold down Allen Bolts | 60000294 (10-32 x .50 Socked hd cap screw) |
| 314 | 60005299 | 4 | House to Female Knife Screws | 60005299 |
| 315 | 60000295 | 4 | House Washers | 60000295 (#6 Plain Steel Washer) |
| 316 | 60000296 | 2 | BODY TO WEAR PLATE SCREWS | 60000296 (10-32 x .5" FLAT HD SOCKET SCR) |
| 317 | 60005495 | 2 | BODY TO HOUSE SCREWS | 60000297 |
| 317-1 | - | - | BODY TO HOUSE SCREWS | 60002166 |
| 602 | 60000969 | 1 | Wear Plate -Old Style | |
| 602-1 | 60001125 | 1 | WEAR PLATE -New Style | |
| 612 | 60001087 | 2 | SHIM HOLD DOWN BLOCK | |
| 613 | 60000430 | - | Female House Cover Plate | |
| ----- | see note | - | SHIMS | |
| 406 SET | 60002548 | 1 | ADJ LINK ASSMBLY HD NOTCH MACHINE | NOT SHOWN Consult dwg. D 6000012 MADE UP OF 306, 307, 308, 309 |
| 604-_-1 | 60001086 | - | MITER HOUSE -Old Style .918,.937 & 1" HIGH | |
| 604-_-4 | 60002345 | - | MITER HOUSE -Old Style 1 1/8" HIGH | |
| 604-_-5 | - | - | MITER HOUSE -Old Style 1 1/4" HIGH | |
| 604-_-6 | - | - | MITER HOUSE -Old Style 1 1/2" HIGH | |
| 604-1-1 | 60001021 | - | MITER HOUSE -New Style .918,.937 & 1" HIGH | |
| 604-1-4 | 60000426 | - | MITER HOUSE -New Style 1 1/8" HIGH | |
| 604-1-5 | 60002180 | - | MITER HOUSE -New Style 1 1/4" HIGH | |
| 604-1-6 | - | - | MITER HOUSE -New Style 1 1/2" HIGH | |
| 610-1 | 60000971 | - | KNIFE SUPPORT for rule heights up to 1" high | Used where left side miter knife is not supplied |
| 610-4 | 60001024 | - | KNIFE SUPPORT for 1 1/8" high rule | |
| 610-5 | 60001303 | - | KNIFE SUPPORT for 1 1/4" high rule | |
| 610-6 | - | - | KNIFE SUPPORT for 1 1/2" high rule | |

- OLD STYLE machine have house and wear plate mounting screws inserted from the bottom of the machine
 - NEW STYLE machines have house and wear plate mounting screws inserted from the top of the machine.

HELMOLD RULE CUTTER (horizontal)



| CAT # | SAP # | QT/MACH | DESCRIPTION | NOTES |
|-------|----------|---------|---------------------------------------|--|
| 9 | - | 2 | 1/4 - 20 THUMB SCREW | 60005255 (Spade-Head Thumb Screws 1/4-20 x 1/2) |
| 111 | 60000263 | 2 | EQ P B/N/C/M SHORT PIN | |
| 504 | 60000401 | 1 | EQ P CUTTER BRACKET | |
| 505 | 60000402 | 1 | EQ P CUTTER LEG MOUNT | |
| 506 | 60000403 | 1 | EQ P CUTTER LINK | |
| 507 | 60000404 | 1 | EQ P CUTTER HANDLE | |
| 508 | 60000405 | 1 | EQ P CUTTER HANDLE BOLT 5/8" | 60000405 - Pt# 508 sold as a nut and bolt set |
| 508 | 60005346 | 1 | EQ P CUTTER HANDLE NUT 5/8" | 60005346 - Pt# 508 sold as a nut and bolt set |
| 509 | 60000406 | 1 | EQ P CUTTER KNIFE BAR BOLT 3/4" | 60000406 - Pt# 509 sold as a nut and bolt set |
| 509 | 60005347 | 1 | EQ P CUTTER KNIFE BAR NUT 3/4" | 60005347 - Pt# 509 sold as a nut and bolt set |
| 510 | 60000967 | 1 | EQ P CUTTER LONG GAUGE BAR | Marked in English units-Consult Engineering for metric gauge |
| 511 | 60000968 | 1 | EQ P CUTTER LONG GAUGE STOP | |
| 512 | 60000407 | 1 | EQ P CUTTER SHORT GAUGE BAR | Marked in English units-Consult Engineering for metric gauge |
| 513 | 60000408 | 1 | EQ P CUTTER SHORT GAUGE STOP | |
| 517 | 60000413 | 4 | EQ P CUTTER BOLT 3/8 X 1" | 60000413 (3/6-16 x 1 Grade 2 Hex Hd Bolt) |
| 518 | 60000414 | 5 | EQ P CUTTER SCREW 1/4 X 3/4" | 60000414 (1/4-20 x 3/4 Button Hd Socket Cap Screw) |
| 519 | 60000415 | 2 | EQ P CUTTER SCREW 1/4 X 1 1/8" | 60000415 (1/4-20 x 1 1/8 Socket Hd Cap Screw) |
| 520 | 60000416 | 3 | EQ P CUTTER SCREW 10-32 X 3/4" | 60000416 (10-32 x 3/4 Fillester Hd Screw) |
| 501-1 | 60000393 | 1 | EQ P CUTTER BODY 1.500 | |
| 501-2 | 60000394 | 1 | EQ P CUTTER BODY 2.125 | |
| 501-3 | 60000395 | 1 | EQ P CUTTER BODY 2.875 | |
| 502-1 | 60000396 | 1 | EQ P CUTTER UPPER KNIFE BAR 1.500 | |
| 502-2 | 60000397 | 1 | EQ P CUTTER UPPER KNIFE BAR 2.125 | |
| 502-3 | 60000398 | 1 | EQ P CUTTER UPPER KNIFE BAR 2.875 | |
| 503-1 | 60000399 | 1 | EQ P CUTTER GAUGE BAR ANGLE 1.500 | |
| 503-2 | 60001017 | 1 | EQ P CUTTER GAUGE BAR ANGLE 2.125 | |
| 503-3 | 60000400 | 1 | EQ P CUTTER GAUGE BAR ANGLE 2.875 | |
| 515-1 | 60000409 | 1 | EQ P CUTTER UPPER CUTTING KNIFE 1.500 | Knife is 1 3/4" long |
| 515-2 | 60001018 | 1 | EQ P CUTTER UPPER CUTTING KNIFE 2.125 | Knife is 2 1/4" long |
| 515-3 | 60000410 | 1 | EQ P CUTTER UPPER CUTTING KNIFE 2.875 | Knife is 3" long |
| 516-1 | 60000411 | 1 | EQ P CUTTER LOWER CUTTING KNIFE 1.500 | Knife is 1 3/4" long |
| 516-2 | 60001019 | 1 | EQ P CUTTER LOWER CUTTING KNIFE 2.125 | Knife is 2 1/4" long |
| 516-3 | 60000412 | 1 | EQ P CUTTER LOWER CUTTING KNIFE 2.875 | Knife is 3" long" |

HELMOLD

voestalpine Precision Strip LLC 901 Morse Ave., Elk Grove Village IL 60007-5107 USA

Phone 1-800-344-7138

www.helmold.com