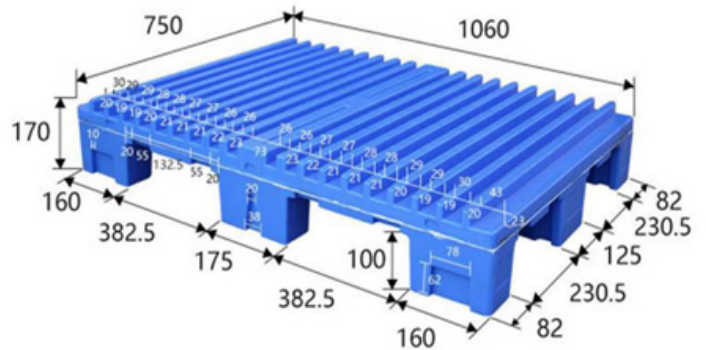
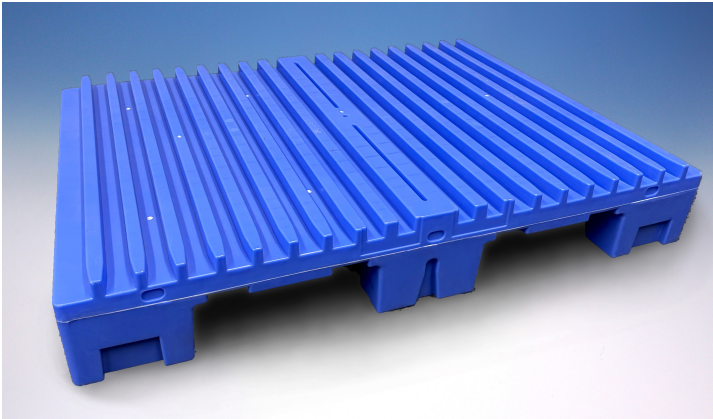




FREEMAN PALLETS



► Freeman's pallets are designed for easy manual handling, featuring a lightweight construction that won't splinter or cause damage to machines.

These versatile pallets can be utilized throughout the entire production process. The grooves on the pallet align perfectly with the feeder swords, allowing for 'non-stop' feeding of board, paper, or corrugated materials during printing and die cutting.

Their smooth, plastic surface makes them easy to clean – just wipe away dust or blow off any powder. The cleanable, food-safe polymer surface also complies with various health and safety standards, hygiene and BRC accreditation requirements.

Sold in packs of 19.

Compliant Machines

Bobst

- 102, 102CE, 102CER, 102E, 102E2, and Evoline
- 103, 103ER
- 104, 104ER
- 106 Commercial/Speria, 106 Spanthera/Sprinter, 106 Nova/Expert Gen 2.0 & 3.0

Heidelberg

- 102CD/CDX, 102SM, 105XL
- 106CDX, 106XL, 106 Prime Fire, 106 Commercial, 106 Pro Matrix

Brause

- 106

Iberica/KBA

- 106 Rapida

Komori

- 40"S, 40"SX

Roland

- 106 (all formats)



Scan for product webpage

**For ordering, visit the webpage and order online
OR contact your local Territory Account Manager**



**Join Freeman 360° today! Use your Customer Number
to create an online account on DieBoard.com!**

Your Freeman Customer Number can be found on any invoice.

