

DIE CUTTING PUNCHES



Freeman is Pace Punches' largest distributor in North America, carrying deep inventories for quick shipping. Pace Punches are the absolute best punches for your tooling – each punch is precision surface ground for height tolerance and the knife edge closely resembles and wears similar to Bohler rule. This results in quicker make-ready and long life on press.



✓ Surface Ground

Every single punch is surface ground to exact height

✓ Close Tolerance

Measurements are within 0.0005"

✓ Even Wear

Pace Punches wear similarly to Bohler rule for long press runs

✓ Long Lasting

Heat treat and precision grinding result in long life on press

✓ Nicks Available

Pace Punches are available pre-nicked for fast make-ready

✓ Customizable

Custom diameters and heights available

"We use Pace Punches because we feel the height tolerance, sharpness and the longer bevel is by far the best punch that we have used as we get a very clean cut even when cutting thicker materials.

The other great future we have found is the punches seem to wear evenly with the cutting rule which helps eliminate over cutting and damaging the cutting strike plate."



Kelly Morris, Die Shop Manager
Hoosier Gasket - Indianapolis, IN



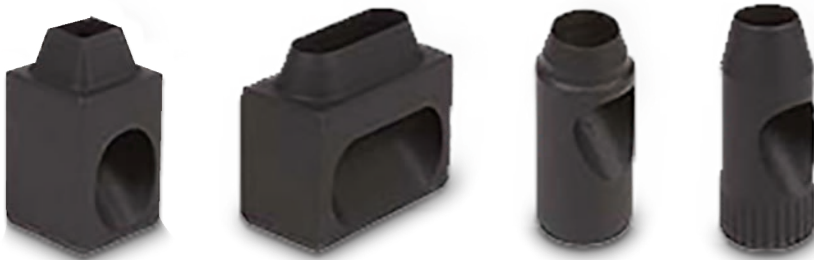
Tube

Available with springs and rubber ejectors



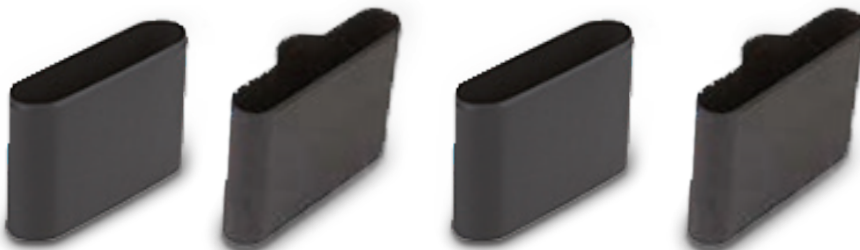
Serrated Rotary

Perfect for cutting corrugated board on both flat and rotary dies



Side Outlet

100% stripping



Seamless

Eliminate nicks for easy stripping



Heavy Duty

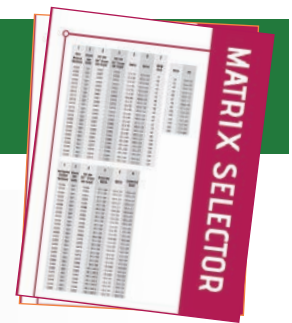
Cut heavier and thicker materials easily



Specialty Shapes

Save time on your irregularly shaped cuts

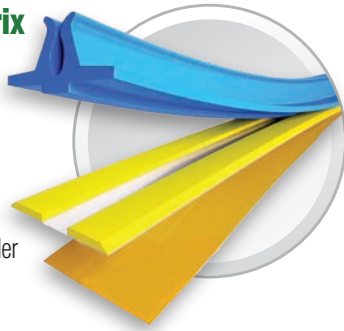
MATRIX



Freeman stocks deep inventories and a wide selection of C&T Matrix, the world's leading manufacturer of creasing matrix. Our Matrix Selector Guide can help you decide which product is best for you. Visit our website, www.DieBoard.com, to view all our technical documents.

Channel XTC Plastrix Matrix

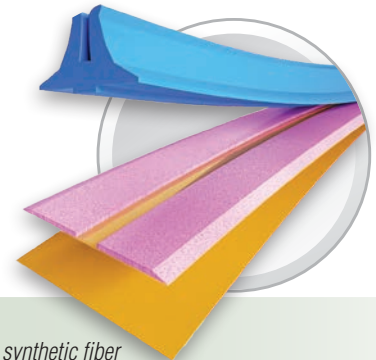
Formerly known as Bobst® Syntrix, Plastrix is a proven high-grade 12mm PVC matrix. It offers the strength of plastic with a lower profile of a mylar base. The mylar base is incredibly strong – even an accidental double sheet will not separate the matrix shoulder from the base. Plastrix is easy to skive and gets operators up and running fast.



- ✓ Best selling & most cost effective solution in our line
- ✓ Widest range of creasing matrix available
- ✓ Manufactured from high grade PVC for excellent cost to performance ratio
- ✓ Available in centered and off-center

Channel Pink Skive-able Matrix

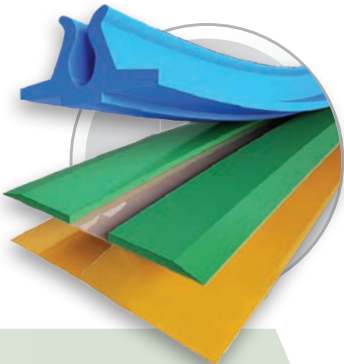
Durable and easy to skive, PINK is made with patent-protected Rosadium fiber. The strong adhesive bond provides the strength and durability for many repeat runs.



- ✓ High-quality matrix from synthetic fiber
- ✓ Rosadium fiber is easy to skive
- ✓ Strong adhesive for long runs
- ✓ Available in centered and off-center

Channel Corrugate Matrix

This matrix was designed specifically for corrugated board. The extra-wide base reduces cracking on corrugated scores, especially when paired with our Red Soft “C” rubber. The extra-wide base also eliminates movement of the matrix on press and fishtailing.



- ✓ 20mm wide base specifically designed for corrugated board
- ✓ Works best paired with Red Soft “C” profile rubber SKU #084815
- ✓ Crushes corrugated top and bottom for improved folding without cracking
- ✓ Available in centered, off-center, and U-bend for double scores

Original Channel Matrix

The Original Channel Matrix is perfect for Heidelberg's and flat bed diecutters. The strong steel-backed matrix provides increased rigidity for cylinder diecutting, and remains rigid even when the cutting plate flexes. Also great for short-medium runs and hand-fed presses.



- ✓ Widest range of metal based PVC matrix available on the market
- ✓ Color coded PVC plastic shoulders according to the size
- ✓ Available in centered and off-center variations
- ✓ Available with both standard and extra strong tape



Red Soft “C” Rubber works well with Channel Corrugate Matrix.



We also offer a matrix cutter featured in our Hardware & Accessories section.

COUNTERPLATES

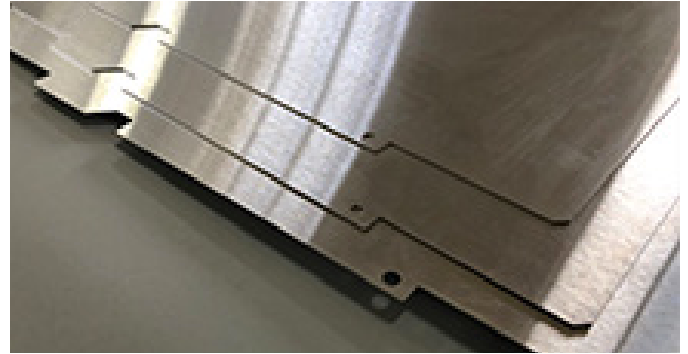
STEEL COUNTERPLATES

MatchPlate Counterplate

MatchPlate Steel Counterplates are manufactured utilizing a proprietary steel that machines easily.

Available in all Bobst sizes as well as Iberica, Sanwa, Kama, Brause, Heidelberg, and custom sizes.

- ✓ Works best with MatchPlate Bits
- ✓ Machines extremely easily on counter cutters
- ✓ Wear hardens on press to Medium-Hard
- ✓ Eliminates ghosting that phenolic counters can cause
- ✓ Faster make-ready than phenolics
- ✓ Reduces angel hair and dust



Marco Medium-Hard Counterplate

Marco Medium-Hard Steel Counterplates are manufactured with heat treat to 35 Rockwell and a special flattening process to ensure a dead flat plate.

Available in most Bobst sizes from 102-162 large format as well as Iberica and Sanwa press sizes. Freeman also stocks 1mm and 1.5mm thick blanks for custom laser-cutting.

- ✓ German precision manufacturing and high quality steel
- ✓ Average 33-35 Rockwell
- ✓ Special flattening process ensures a flat plate every time
- ✓ 1mm, 1.5mm, & blanks available
- ✓ Pairs best with MatchPlate bits

MatchPlate Bits

Our unique tapered single-pass MatchPlate Bits easily mill precisely tapered channels, eliminating double pass cutting and time-consuming rounding of sharp channel edges. Over 30 channel widths in stock.

- ✓ Heavy 1/4" shank solid carbide
- ✓ Unique tapered bit eliminates double pass cutting & sharp corners
- ✓ 30 sizes available from .045" to .119"



Did you know...

The combination of our steel plates and MatchPlate Bits increases throughput, reducing machining time from 4 hours to 1 hour!

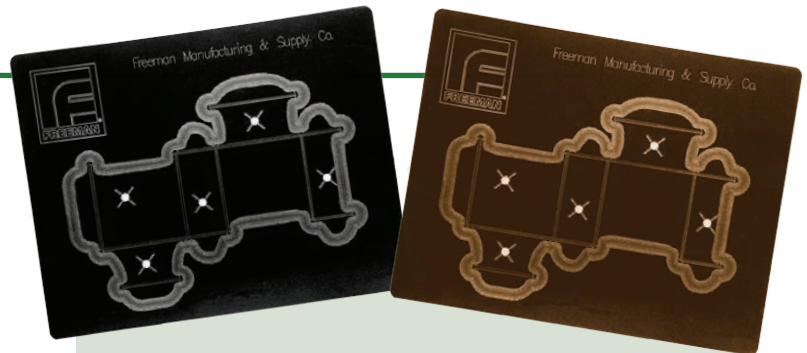
PHENOLIC COUNTERPLATES

Black Rigid Counterplate

This plate is manufactured to very tight tolerances allowing for consistent channel depth accuracy. It mills cleanly with our UHP bits to produce a smooth channel for precise creasing.

Rillma Flex Counterplate

This plate is also manufactured to very tight tolerances, but with the added benefit of a flexible liner or backer. This flexible backer allows the counters to be removed without breaking and be reused. It mills cleanly with our UHP bits to produce a smooth channel for precise creasing. Available with or without PSA.



Black Rigid

- ✓ Thicknesses from 0.4 mm - 1.3 mm (0.016" - .0512")
- ✓ 42" x 42" sheets

Rillma Flex

- ✓ Thicknesses from 0.4 mm - 1.0 mm
- ✓ 42" x 42" sheets
- ✓ With or without PSA

Bits for Counterplate Cutting

Freeman also stocks a full line of UHP Phenolic counter cutter bits, parting bits, and skiving bits. Please see our website, www.DieBoard.com, for complete details and part numbers.



Check out our complete line of Counter Cutting Hardware on page 38.