

GENERAL DIEMAKING HARDWARE

MALLETS



Rawhide and Elastomer Mallets - Regular and Safety Size

Garland Rawhide Mallets



Our Rawhide Mallets are constructed from the finest materials and manufactured in the USA. Freeman's innovative #4 Long Rawhide Safety Mallet offers a 4¾" head – compared to the traditional 3½" – providing an additional level of safety and longer life. Our #2 and larger mallets are available with energy-absorbing foam grips for improved ergonomics and comfort.

SKU	Size	Diameter	Length
081028*	#0	1"	2"
081029*	#1	1¼"	2½"
081030	#2	1½"	3"
081031	#3	1¾"	3½"
081032	#4	2"	3½"
081002	#4 Long Head	2"	4¾"
081003	#4 Long Head & Handle	2"	4¾"
081000	#5	2¾"	4¼"
081001	#6	2¾"	4¾"



Premium Elastomer Mallets

These heavy-duty mallets are constructed with an advanced elastomer resin for durability and toughness. This innovative #4 Long Elastomer Safety Mallet offers a 5" head – compared to the traditional 3½" – providing an additional level of safety. Our elastomer mallets are available with durable foam grips for improved ergonomics, comfort and grip.

SKU	Size	Diameter	Length
081040	#4	2"	3½"
081041	#4L Long	2"	5"
081042	#5	2¾"	4¼"
081043	#6	2¾"	4¾"
59304100	#4 Head Only	2"	3½"
59304500	#4L Head Only	2"	5"
59304900	#5 Head Only	2¾"	4¼"
59305300	#6 Head Only	2¾"	4¾"



Vaughan Rawhide Mallets

Vaughan Rawhide Mallets deliver firm blows from a larger striking face and have a proportionately longer handle. Rawhide heads made in England are compressed under hydraulic pressure, and then seasoned for durability. The mallets are assembled in the USA with top quality hardwood handles. Available with optional foam grips for added comfort and grip.

SKU	Size	Diameter	Length
081037	#4	2"	3½"
081018	#4 with Grip	2"	3½"
081038	#5	2½"	4"
081020	#5 with Grip	2½"	4"
081044	#6	2¾"	4½"
081021	#6 with Grip	2¾"	4½"



Big Red Fiberglass Elastomer Mallets

Big Red Mallets are constructed with a durable elastomer head and a strong yet lightweight fiberglass handle and ergonomic rubber grip for comfort and safety. Heads are removable for replacement or rotation for even better wear. #4 Long and #6 Long are most popular for safety and long life. Sizes include #4, #4L, #5, #6, and #6L.

SKU	Size	Diameter	Length
59308300	#4 - Fiberglass Handle	2"	3½"
59308700	#4L Long - Fiberglass Handle	2"	5"
59309100	#5 - Fiberglass Handle	2¾"	4¼"
59309500	#6 - Fiberglass Handle	2¾"	4¾"
59309600	#6L Long - Fiberglass Handle	2¾"	5½"
59308750	#4L Long Head Only	2"	5"
59309702	#6L Long Head Only	2¾"	5½"



Big Orange Fiberglass Elastomer Mallets

Big Orange Mallets are constructed with a 5½" durable elastomer head and a strong yet lightweight fiberglass handle and ergonomic rubber grip for comfort and safety. Big Orange Mallets are a favorite for serrated-rotary diemaking.

SKU	Size	Diameter	Length
59309900	#6L Long w/ Fiberglass Handle	2¾"	5½"
59309910	#6L Long Head Only	2¾"	5½"

GENERAL DIEMAKING HARDWARE

Standard Mylar®

Freeman Mylar is an economical grade of mylar and provides the best value. Available in 2" & 3" cores, and single-matte for perfect plotting and minimal smudging. Double matte is available via special order. For our Premium Mylar, see page 39.

- ▶ 150 ft. or 300 ft. rolls
- ▶ Thicknesses of .003" or .005"
- ▶ Matte on one side for perfect plotting
- ▶ 2" or 3" cores
- ▶ Roll widths of 36", 42", 48", 54", or 60"



Speedee Puller

The Speedee Puller with magnetic pin and feet extracts rule vertically for reduced fatigue and injury. Eliminates damage to the dieboard and kerf. Works on rule up to 1½" tall and 2PT through 6PT. **SKU #59966200**



Econo-Puller

Economical, heavy-duty rule puller for 2-, 3-, and 4-PT rules up to 1.250". Plastic feet in various heights and feet available. **SKU #59958900**



Manual Rule Pullers

Standard Rule Pullers with hardened teeth for extracting Steel Rule for boards. *Please see our website, www.DieBoard.com, for complete options and part numbers.*

Pneumatic Grinder

This Pneumatic Grinder conveniently hooks up to the on-press air supply. Complete with various depth settings and variable speeds. Creates perfect 90° nicks every time. This grinder uses 50mm x 8mm arbor grinding wheels.

SKU #59952900



Aluminum Oxide Nicking / Grinding Wheels

Nicking and Grinding wheels are bonded and reinforced for easily and quickly creating nicks in steel rule. Aluminum oxide is added to the wheels for longer wear.

- ▶ Bonded and reinforced
- ▶ Thicknesses from .006" to .062"
- ▶ Diameters of 1", 1½", 1¾", 2", 2¼", and 50mm
- ▶ Mandrel sizes of ⅛", ¼", ⅜", 1.8mm, and 8mm



Perf-A-Type & Tracks

This complete selection of numbers, characters, and letters are made from sharper, high-grade material to create perforations with less pressure for identification on corrugated board. Special characters include the dash, slash, recycled symbol, and more. Options include Standard ¾" height, Mini-Perf ⅜" height, and with or without adhesive.

The durable plastic track holds Perf-A-Type in place for pre-assembly and affixing to the dieboard. Tracks are available with tapered or square rails and with or without PSA.

Please see our website, www.DieBoard.com, for all Perf-A-Type part numbers.

Perf-A-Type Track product information is listed below.



SKU	Style	Height	Length
59103430	Perf-A-Track Black	0.055"	36"
59104170	Perf-A-Track Blue Rigid	0.075"	36"
59104910	Perf-A-Track Green	0.074"	60"
59108240	Perf-A-Track Red Rigid	0.125"	36"
59108610	Perf-A-Track White Rigid w/ PSA	0.125"	36"
59108980	Perf-A-Track Yellow Flexible	0.125"	66"
59109350	Perf-A-Track Yellow	0.145"	36"
59105280	Perf-A-Track Blue Mini	0.041"	36"
59105650	Perf-A-Track Blue Mini	0.094"	36"
59106020	Perf-A-Track Red Mini	0.041"	36"
59106390	Perf-A-Track Red Mini	0.190"	36"

ROTARY DIEMAKING HARDWARE



Round Washers

Round die washers made of solid steel protect the bolt holes on rotary tooling. The pre-bent curved washer flattens out and locks into place on a rotary die when installed.



SKU	Style	Washer Diameter	Hole Diameter
59977400	Cone Washer	1"	3/8"
59977200	Plain Washer	1"	7/16"
59939000	Curved Washer	1"	7/16"
59949900	Slotted Washer	1"	3/8"

Speed Washers

Speed Mount Washers save time and money by eliminating slow and costly counterboring of laser-cut holes for steel washers. Simply laser-cut a hole and insert the washer. Available in blue and yellow with solid steel insert washer. Outside dimensions are 1" x 1 1/8".



SKU	Style	Hole Diameter
59965000	Blue Oval	3/8"
59965010	Blue Round	3/8"
59949950	Yellow Round	3/8"

Elongated Oval Washer – Slotted

The slotted elongated oval washer has a 2 1/2" adjustability for rotary die attachments. They are 1.4mm thick and bendable for radius adjustment.



SKU	Washer Width	Washer Length	Slot Width	Slot Length
59977600	1 1/8"	3 1/4"	3/8"	2 1/4"

Adjustable Rotary Washers

These machined adjustable 2- & 4-way washers have an adjustable slot for 2" hole spacing and 3/8" widths for standard bolts. Straight style only. Choose from aluminum, plastic, or steel. Red 2-way adjustable speed washer also available.



SKU #59936435

SKU	Washer Width	Washer Length	Slot Width	Slot Length
59946090	1"	2 1/2"	3/8"	2"
59932100	1 1/4"	3 1/4"	5/16"	2 3/8"
59931800	1 1/8"	1 1/8"	3/8"	3/8"
59931900	3/4"	3"	5/16"	2 3/8"
59932000	3/4"	4"	5/16"	3 3/8"
59932200	1 1/8"	3 3/4"	5/16"	2 7/16"
59936435	1"	3"	10mm	60mm

Key Hole Plate

Steel key hole plate for quick-mount rotary die systems enables safety handle to lock into the die for lifting or adjusting on press.



SKU	Washer Width	Washer Length	Slot Width	Slot Length
59946000	1 1/8"	2 5/8"	3/4"	3/4"

Rule Curve Set

This unique tool block set enables diemakers to re-curve rule to a different diameter, eliminating the need to stock additional diameters of rule. **SKU #59721200**

Miter Blades

These Miter Blades are specifically made for Helmod 1.50" bench cutter, reducing the need to hand-grind bevels on rule joints.



SKU	Description
59906900	7° Miter Set for 1.50" Rotary Rule
59908100	Standard Miter/Cutter Set - 1.50"

LeGard - Lead Edge Guards

LeGards are Lead Edge supports that bolster the knife to prevent bending or complete roll-over of the cutting rule on rotary dies. Available in many proven profiles and also in a new surface mount.



SKU	Description
59966900	L-Shape LeGard for 0.937"-1.125" Knife
59821500	U-Channel LeGard 0.800"
59947000	Jumbo L-Shape LeGard for 1.125"+
59966950	Jumbo U-Shape LeGard Brace

Bridge Supports

These solid steel supports reinforce the rotary die at the bridge or notch. Exclusive, custom design manufacturing available. **SKU #59936300**



Cast LeGard Surface Mount

Surface mount rule supports are used to support the lead edge knife and are also useful for rebuilds, revisions and repairs.



SKU	Size
59957610	1 1/16" L x 1/2" W x 3/8" H with Mounting Holes



Rotary Hoops

Aluminum hoops are made for quick-mounting rotary die systems. The aluminum billet is machined both sides or one side and has hardened threaded inserts.

SKU	Diameter
59811900	7"
59812100	8.2"
59812500	9 1/2"
59813100	10 1/2"
59813400	14 1/2"
59814300	19 3/16"
59814350	19 3/16" (1-Sided)
59814600	Hoop Screws
59814950	Hoop Washers

ROTARY DIEMAKING HARDWARE

FREEMAN CUSHION CREASE

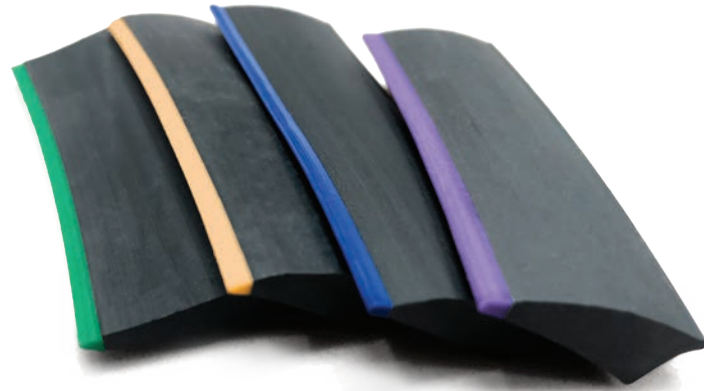


Used primarily on rotary tooling, Freeman Cushion Crease mounts on both sides of 90° scores to reduce cracking and improve scoring on corrugated board. The 60-65 Durometer Cushion Crease crushes the corrugated fluting, allowing proper scoring and better folding.

Stripe Cushion Crease

This style of Cushion Crease has unique colored stripes that allow diemakers to determine the correct height at a glance. Available in boxes or 164' coils.

SKU	Height	Color	Box	SKU	Height	Color	Coil
59634700	0.225"	Gray	50'	59637800	0.225"	Gray	164'
59635300	0.275"	Green	82'	59637810	0.275"	Green	164'
59635900	0.300"	Gold	82'	59637820	0.300"	Gold	164'
59636300	0.315"	Blue	66'	59637830	0.315"	Blue	164'
59636700	0.335"	Purple	66'	59637840	0.335"	Purple	164'
59637300	0.355"	Orange	66'	59637850	0.355"	Orange	164'
59637500	0.375"	White	50'	59637860	0.375"	White	164'
59637310	0.400"	Pink	36'	59637870	0.400"	Pink	164'



Solid Color Cushion Crease

A Freeman exclusive! Solid Color Cushion Crease is manufactured with a proven profile and printed with height identification for mistake-free application. Also available in custom colors and custom logo printing.*

SKU	Height	Color	Length
59634300	0.175"	Black	50'
59634690	0.225"	Gray	50'
59635290	0.275"	Green	50'
59635890	0.300"	Yellow	40'
59636305	0.315"	Blue	40'
59636705	0.335"	Purple	36'
59637295	0.355"	Orange	36'
59637495	0.375"	White	30'
59637330	0.400"	Red	30'

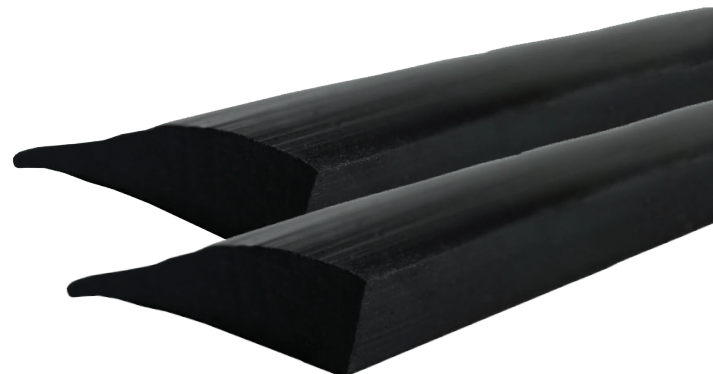
*Minimum order quantities apply. Please call for details.



Black Cushion Crease

The Black Cushion Crease profile has been a diemaker's staple for years. Prevents cracking and aids in folding. This economical version is great for both short and long run applications at a great value.

SKU	Height	Length
59635700	0.300"	40'
59636100	0.315"	40'
59636500	0.335"	36'
59636900	0.355"	36'



FLAT DIEMAKING HARDWARE

T-Nuts

High quality T-Nuts available in threaded or threadless designs, for mounting and aligning dies and fixtures. Standard and heavy duty available. Standard or metric thread. *Please see our website, www.DieBoard.com, for complete dimensions and part numbers.*



Dieboard Glue

Easily and quickly bond birch dieboard with a brush or roller using **BirchBond**. It offers a high built-in wet tack that helps prevent board movement during clamping. **MPG Pink Glue** is a fast-bonding, water-based glue. Its pink color allows the diemaker to easily see the adhesive and whether it was applied evenly.



SKU	Description
022710	BirchBond - 1 Gallon
022715	BirchBond - 5 Gallon
59404100	MPG Pink - 1 Gallon
59404300	MPG Pink - 5 Gallon

H-Clips

H-Clips strengthen the dieboard and hold the knife in place when producing Cavity Dies.



SKU	Style
59946100	A-Type
59946200	B-Type
59946300	C-Type

Edge Corner Protectors

Plastic corner protectors for flat dies.

SKU	Description
59941400	Blue Edge Protector 3/4"
59941500	Red Edge Protector 5/8"



Red Joint Supports

These red plastic supports keep 0.918" and 0.937" steel rule aligned at the joint line. **SKU #59957600**



Guide Pins

Guide pins locate material onto a die prior to platen cutting.

SKU	Style	Base Size	Length	Diameter
59944100	Brass Guide Pins	1/4"	1/8"	
59944200	Brass Guide Pins	3/8"	1/8"	
59944600	P-100 Guide Pins	1/4"	7/8"	1/8"
59944700	P-101 Guide Pins	1/4"	1 1/16"	1/8"
59944800	P-102 Guide Pins	1/4"	1 1/4"	1/8"
59944900	P-104 Guide Pins	1/4"	2"	1/8"
59945000	P-132 Guide Pins	1 1/32"	1 1/16"	1/4"
59945100	Blue Stop Guide Pins (100 pc.)			

GERBER™ DIES

Parting Bit

Parting bits are designed for quick die perimeter separation and hand-hole cutting on 5/16" dieboard.



SKU	Size
59279700	1/4" Quick Parting Tool, spiral cutter

Dowel Pins

Dowel pins are used to perfectly align the two halves of a board produced on a Gerber router system.



SKU	Diameter	Length
59950700	3/16"	5/8"
59950750	1/4"	5/8"

Kerf Bits for Steel Rule Dies

These high-performance bits last longer and have the lowest deflection of any other bit on the market. The improved 5-flute geometry keeps the bit cool so the edges stay sharp. An overheated bit causes the edges to round-over and tear the wood fiber, causing poor kerf quality, extra clean-out, and premature bit breakage. *Please see our website, www.DieBoard.com, for complete dimensions and part numbers.*



- ▶ From 2 pt. to 6 pt.
- ▶ 1/8" Perimeter Cutters
- ▶ 0.240" Clean Out Bits

BAYSEK™ DIES

Suction Cups

Baysek style suction cups are made from high quality silicone for best performance on press. Complete selection of cups, 90° and standard barbed and flanged bases, double-end 6mm fittings and plugs, and high quality, long-lasting vacuum hoses.

SKU	Description
59933300	A-20 Suction Cup
59934200	B-28 Suction Cup
59936400	C-30 Suction Cup
59936405	C-33 Suction Cup
59936430	D-41 Suction Cup - Lead Edge
59936440	D-47 Suction Cup
59936410	Barbed Suction Cup Holder
59936415	Barbed Suction Cup Holder 90°
59936420	Flanged Suction Cup Holder
59932702	6mm x 1/8" RPT 38mm Solid Plug
59943205	M6-1/8" RPT Double-Female, Self-Seal Fitting
59976502	6mm x 4mm Nitra Tubing 100 ft. (30 m) - Black
59976505	6mm x 4mm Nitra Tubing 100 ft. (30 m) - Blue
59976515	6mm x 4mm LLDPE Premium Tubing 984 ft. (~300 m) - Black
59976510	6mm x 4mm LLDPE Premium Tubing 984 ft. (~300 m) - Blue



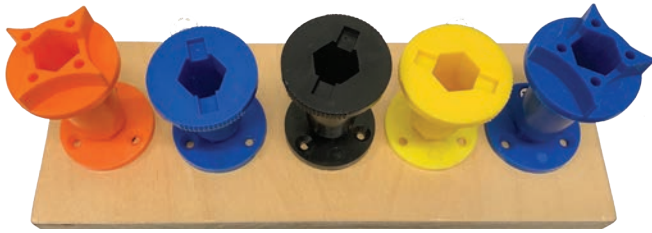
Mini U LeGard

Small U-Channel LeGard for Baysek style dies. Reinforces knife to stand up to roller style press.

SKU	Style
59821500	U-Channel 0.800"



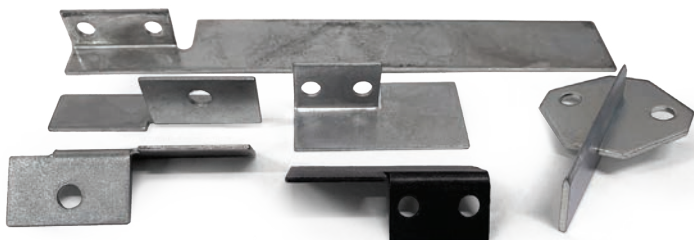
STRIPPING HARDWARE



Bobst® Bolts

Bobst® nuts and bolts are used to hold upper and lower stripping fixtures together. Available in many colors and 43mm or 50mm diameters.

SKU	Style
59805000	Blue Nuts for Centerline
59802900	Blue 43mm Bolts for Centerline
59803200	Blue 50mm Bolts for Centerline
59805301	Green Nuts for Centerline
59803500	Green 50mm Bolts for Centerline
59805600	Orange Nuts for Centerline
59803800	Orange 50mm Bolts for Centerline
59806200	Yellow Nuts for Centerline
59804700	Yellow 43mm Bolts for Centerline
59805900	Red Nuts for Centerline
59804100	Red 43mm Bolts for Centerline - Low Profile
59804400	Red 50mm Bolts for Centerline
59803303	Black Nuts for Centerline
59803304	Black 50mm Bolts for Centerline



Separator Knives

These left and right-handed trim separators, as well as deep and shallow center knives, are for different thicknesses of dieboards.

SKU	Style
59819100	Trim Separator - Left-Handed, Shallow
59819700	Trim Separator - Right-Handed, Shallow
59819150	Trim Separator - Left-Handed, Deep, 2-Hole, Zinc
59819750	Trim Separator - Right-Handed, Deep, 2-Hole, Zinc
59819200	Trim Separator - Left-Handed, Deep, 2-Hole, Black
59819300	Trim Separator - Right-Handed, Deep, 2-Hole, Black
59962200	Center Knife Separator

Tie Bolts

Available in Hex Head for the Quick-Lock System and Hollow for the Sprinthera Blanker.

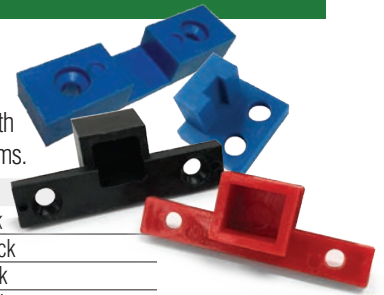
SKU	Style
59817000	Hollow Head Tie Bolt - Silver
59803250	Hollow Head Tie Bolt - Gold
59803100	Hex Head Tie Bolt
59815500	Lock Nut for Tie Bolt
59817600	Tie Bolt Screw
59817900	Tie Bolt Screw - Long



Centerline Blocks

These blocks align the stripping units with the cutting die on Centerline press systems.

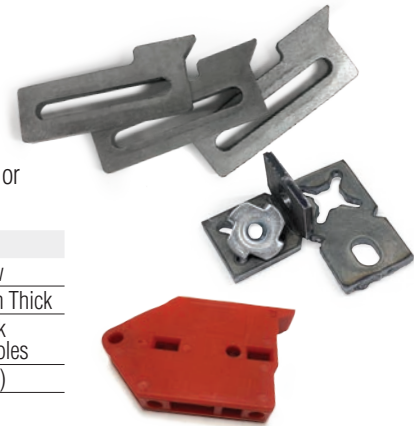
SKU	Style
59802000	Large Red Centerline Block
59800800	Large Black Centerline Block
59801410	Large Blue Centerline Block
59801400	Small Blue Centerline Block



Clamping Jaw

Installed next to the laser-cut rail on an upper stripping unit. Made with plastic or solid steel.

SKU	Style
59808030	Plastic Clamping Jaw
59808010	25mm Clamping Jaw, 6mm Thick
59967220	48" Length x 1/4" Thick Steel Stripper Rails w/Holes
59967225	Rail Clamp (for T-Nut)



Corey Clamp

This nylon clamping jaw is made for a laser-cut dieboard's stripping rail.

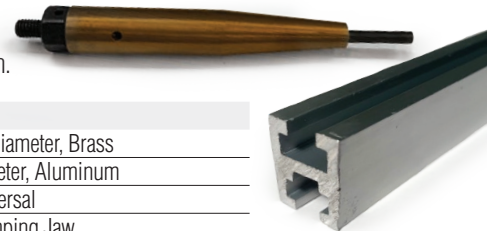
SKU	Size
59808300	15mm
59808600	3/8"



Spring Loaded Pins

Narrow and standard body, spring-loaded lower stripping pin.

SKU	Description
59962600	Thin Body Pin - 3/8" Diameter, Brass
59808020	Lower Pin - 3/8" Diameter, Aluminum
59808025	Lower Pin Rail - Universal
59808015	Lower Pin Rail - Clamping Jaw



Spacers

Wide variety of stripping fixture spacers for reduced weight upper stripper units. The new Blue Oval and Clear-Purple are the most popular.

SKU	Size	Style
59964300	7/8"	Black
59964400	7/8"	Black w/Divets
59964500	7/8"	Clear-Purple
59964600	7/8"	Green
59964700	1 1/8"	Blue
59964710	7/8"	Blue Oval
59964715	1 1/2" x 3/8"	Alum. Blanker Spacer



STRIPPING HARDWARE CONTINUED

Stripping Pins

Stripping pins are used to punch the scrap through an opening in the lower block unit. Machined for accuracy, hardened, and anodized. Available in crowned top (with teeth), pin top, or flat top.



SKU	Size	Style
59967300	1.8 mm	Flat Top
59967400	2 mm	Crown Top
59967600	2 mm	Flat Top
59967700	2 mm	With Point
59967800	3 mm	Crown Top
59968000	3 mm	Flat Top
59968100	3 mm	With Point
59968200	4 mm	Crown Top
59968400	4 mm	Flat Top
59968500	4 mm	With Point
59968600	5 mm	Crown Top
59968700	5 mm	Flat Top
59968800	5 mm	With Point
59968900	6 mm	Crown Top
59969000	6 mm	Flat Top
59969100	6 mm	With Point

SKU	Size	Style
59969200	7 mm	Crown Top
59969300	7 mm	Flat Top
59969400	7 mm	With Point
59969500	8 mm	Crown Top
59969600	8 mm	Flat Top
59969700	8 mm	With Point
59969800	9 mm	Crown Top
59969900	9 mm	Flat Top
59970000	9 mm	With Point
59970100	10 mm	Crown Top
59970200	10 mm	Flat Top
59970300	10 mm	With Point
59970400	14 mm	Flat Top
59970600	15 mm	Flat Top
59970700	15 mm	Crown Top

Automatic Stripping Pins

Stripping pins in cartridges for an automatic pin setter. Available in crown top.

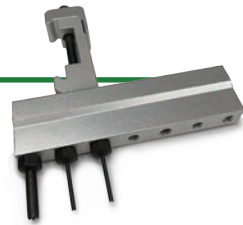


SKU	Size	Style
59967405	2 mm	Crown Top Auto
59967805	3 mm	Crown Top Auto
59968205	4 mm	Crown Top Auto
59968605	5 mm	Crown Top Auto

Screw-In Upper Stripping Pins

Available in Crown Top or Flat Top for upper fixture stripping units.

SKU	Size
59967500	2 mm
59967900	3 mm
59968300	4 mm
59970702	5 mm
59970500	15 mm



Spring Pins

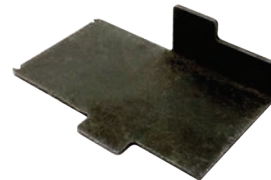
Also known as Roll Pins, these can be used as an alternative to stripping pins. Made of black oxide rolled steel.

SKU	Diameter	Length
59951100	1/4"	2"
59950900	1/8"	2"
59951000	3/16"	2"
59951200	3/16"	2"



Stripping Plates

Hardened steel stripping plates are used where stripping pins won't get the job done. Claws grip the scrap for dynamic stripping. 50mm high and 1mm thick. Available in many sizes with left and right bend.



SKU	Width	Style
59970800	5 mm	Bent Left
59970900	5 mm	Bent Right
59971100	7 mm	Bent Left
59971200	7 mm	Bent Right
59971300	9 mm	Bent Left
59971400	9 mm	Bent Right
59971600	11 mm	Bent Left
59971700	11 mm	Bent Right
59971900	15 mm	Bent Left
59972000	15 mm	Bent Right
59972100	20 mm	Bent Left
59972200	20 mm	Bent Right
59972300	25 mm	Bent Left
59972400	25 mm	Bent Right

COUNTER CUTTING

Counterplate Mounting Pins

Counterplate mounting pins locate and transfer the phenolic counterplates for accurate registration. Made from machined delrin plastic or aluminum.

SKU	Style
59951300	Aluminum Counterplate Pins (Machined)
59951400	Black Counterplate Pins
59951500	Red Counterplate Pins
59951600	White Counterplate Pins (Machined)
59951700	White Counterplate Pins (Molded)
59951800	White Nylon Square Counterplate Bushing
59950500	Blue Counterplate Rubber Rings - 3/8" Diameter



Locator Pin Puller

Handy tool for pulling the phenolic locator pins with ease. **SKU #59938400**



Channel Cutters

Channel Cutters are designed to cut creasing channel profiles in phenolic counter material. The smooth cutting edge geometry virtually eliminates chatter, lifting, and gouging.

SKU	Diameter	Depth of Cut	Shank
59262200	0.045"	0.090"	1/8"
59262300	0.060"	0.125"	1/8"



Counterplates

Black Rigid Counterplate

has the tightest thickness tolerance of +/- 0.03mm, allowing for board-to-board and channel depth consistency. One side of the board has a "structured surface" that allows adhesive to easily bond without affecting the thickness tolerance. When milled, it produces a clean channel for precise creasing.



Black Rigid

- ▶ Thicknesses from 0.4 mm - 1.3 mm (0.016" - .0512")
- ▶ 42" x 42" sheets

Rillma Flex

- ▶ Thicknesses from 0.4 mm - 1.0 mm
- ▶ 42" x 42" sheets
- ▶ With or without PSA

Rillma Flex is made of a phenolic counter material with milled creasing channels. This can be matched perfectly to the paperboard in use. Available with or without adhesive foil on the back as well as a flexible white backer for re-use.

MAKE-READY ITEMS



Premium Mylar®

Freeman Premium Mylar is manufactured with a precise thickness tolerance and unrolls easily with no edge curl or memory. Available in clear both sides, or matte-one-side for smudge-proof plotting. Double matte is available via special order. For our Standard Mylar, see page 33.

- ▶ 300 ft. rolls
- ▶ Thicknesses of .003" or .005"
- ▶ 3" cores
- ▶ Roll widths of 36", 42", 48", 54", or 60"



Ink Jet Exposure Film

This affordable Ink Jet film for rotary plate making negatives will not lift under heat. It is available with a 2" core and is .004" thick, 44" wide, and 33 yards long. **SKU #59500500**



Spot Sheet

Spot Sheet

This pre-compressed, non-tear, moisture-resistant paper with 3" laminate core is perfect for easy spot tape and plotter use.

SKU	Thickness	Width	Length
59966400	0.004"	42"	164'
59966500	0.004"	53½"	164'



Matrix Cutter

The matrix bench press is used to quickly and repeatedly produce 45° cuts in the matrix for a multiple-up die, saving time and money for quick make-ready. The 45° miter cuts allow for tight mounting on the steel counterplate, leading to higher-quality end results. **SKU #59977610**

Paper/Fiber Spot Tape

Make-Ready Tape is used to compensate for uneven rule height or variations in the die cutting surface. Available in many thicknesses and widths.

SKU	Thickness	Width	Color
59953700	.001"	¼"	Blue
59953800	.001"	½"	Blue
59953900	.001"	¾"	Blue
59949002	.002"	¼"	Red
59954000	.002"	½"	Red
59954100	.002"	¾"	Red
59954000	.002"	¼"	Red
59949004	.001"	¼"	Yellow
59954200	.002"	¼"	Yellow
59954300	.003"	½"	Yellow
59973200	0.0015"	½"	N/A
59973300	0.0015"	¼"	N/A
59973400	0.003"	¼"	N/A
59973500	0.003"	¼"	N/A
59973600	0.006"	½"	N/A
59973700	0.006"	¼"	N/A

Steel Tape

Metal self-adhesive tape.

SKU	Thickness	Width	Color
59972700	0.001"	5/16"	Blue
59972800	0.001"	5/16"	Red
59972900	0.002"	7/32"	Green
59973100	0.005"	5/16"	Blue



Quoins

Quoins quickly lock up dies and furniture strips into the chase. The "T" handle (sold separately) is used to operate the quoins.

SKU	Size
59954605	3" (76mm)
59954800	6" (152mm)
59955000	9" (230mm)
59955100	"T" Handle



Cut Resistant Gloves

Tight fitting, cut-reducing gloves, coated for extra durability.

SKU	Style	Size
59300700	Gray Palm	Small
59300500	Gray Palm	Medium
59300300	Gray Palm	Large
59300900	Gray Palm	X-Large
59301100	Gray Palm	2X-Large
59301300	Yellow Kevlar Slip Resistant	One Size



DIEMAKING EQUIPMENT



Hel mold EZ Benders (pictured) and other Hel mold equipment are available on our website.

Hel mold EZ Heavy Duty Rule Benders

An essential shop tool for making steel rule dies, this bender can be used with various male and female dies in order to form rule to the desired shape. Cam design reduces bending force needed. For use up to 6 PT rule. *Please see our website, www.DieBoard.com, for complete dimensions and part numbers.*

Hel mold EZ Heavy Duty Notchers

Used for notching and bridging rule, this heavy duty notcher easily notches steel rule. Cam design reduces bending force needed. Available with a curved base for rotary rule. For use up to 6 PT rule. *Please see our website, www.DieBoard.com, for complete dimensions and part numbers.*

Modular Marco Notcher Set

This tool steel reversible female plate mounts to stationary backing block and one piece male knife set. *Please see our website, www.DieBoard.com, for complete dimensions and part numbers.*



Hel mold Rule Cutters

A sturdy tool to cut steel rule to length, this cutter's knives are readily removable for sharpening or replacement. For use up to 6 PT rule. *Please see our website, www.DieBoard.com, for complete dimensions and part numbers.*

Cutter Blades

Made from high grade tool steel for long life.

SKU	Description
59907200	Cutter Knives - Lower Only 1½"
59907300	Cutter Knives - Lower Only 2⅞"
59907400	Cutter Knives - Lower Only 2⅞"
59907800	Cutter Knives - Upper Only 1½"
59907900	Cutter Knives - Upper Only 2⅞"
59908000	Cutter Knives - Upper Only 2⅞"
59907500	Cutter Blade Set 1½"
59907600	Cutter Blade Set 2"
59907700	Cutter Blade Set 3"

