

# DIE CUTTING PUNCHES



*Freeman is Pace Punches' largest distributor in North America, carrying deep inventories for quick shipping. Pace Punches are the absolute best punches for your tooling – each punch is precision surface ground for height tolerance and the knife edge closely resembles and wears similar to Bohler rule. This results in quicker make-ready and long life on press.*



## ✓ Surface Ground

*Every single punch is surface ground to exact height*

## ✓ Close Tolerance

*Measurements are within 0.0005"*

## ✓ Even Wear

*Pace Punches wear similarly to Bohler rule for long press runs*

## ✓ Long Lasting

*Heat treat and precision grinding result in long life on press*

## ✓ Nicks Available

*Pace Punches are available pre-nicked for fast make-ready*

## ✓ Customizable

*Custom diameters and heights available*

*"We use Pace Punches because we feel the height tolerance, sharpness and the longer bevel is by far the best punch that we have used as we get a very clean cut even when cutting thicker materials.*

*The other great future we have found is the punches seem to wear evenly with the cutting rule which helps eliminate over cutting and damaging the cutting strike plate."*



**Kelly Morris, Die Shop Manager**  
*Hoosier Gasket - Indianapolis, IN*



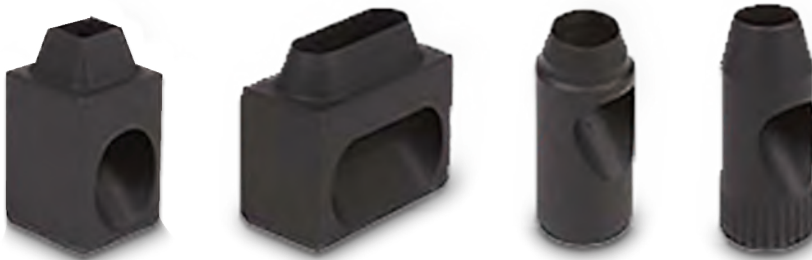
Tube

*Available with springs and rubber ejectors*



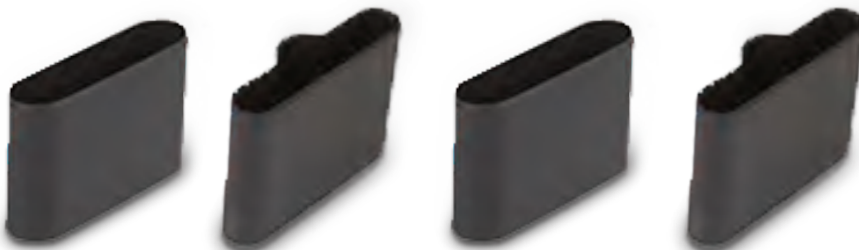
Serrated Rotary

*Perfect for cutting corrugated board on both flat and rotary dies*



Side Outlet

*100% stripping*



Seamless

*Eliminate nicks for easy stripping*



Heavy Duty

*Cut heavier and thicker materials easily*



Specialty Shapes

*Save time on your irregularly shaped cuts*



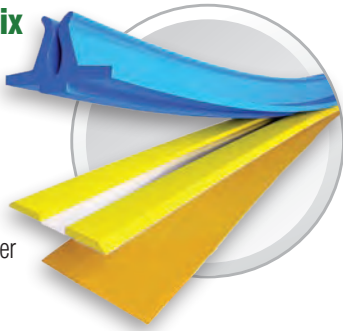
# MATRIX



Freeman stocks deep inventories and a wide selection of C&T Matrix, the world's leading manufacturer of creasing matrix. Our Matrix Selector Guide can help you decide which product is best for you. Visit our website, [www.DieBoard.com](http://www.DieBoard.com), to view all our technical documents.

## Channel XTC Plastrix Matrix

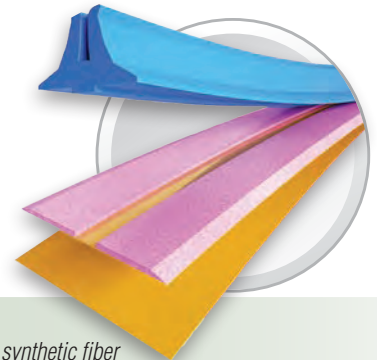
Formerly known as Bobst® Syntrix, Plastrix is a proven high-grade 12mm PVC matrix. It offers the strength of plastic with a lower profile of a mylar base. The mylar base is incredibly strong – even an accidental double sheet will not separate the matrix shoulder from the base. Plastrix is easy to skive and gets operators up and running fast.



- ✓ Best selling & most cost effective solution in our line
- ✓ Widest range of creasing matrix available
- ✓ Manufactured from high grade PVC for excellent cost to performance ratio
- ✓ Available in centered and off-center

## Channel Pink Skive-able Matrix

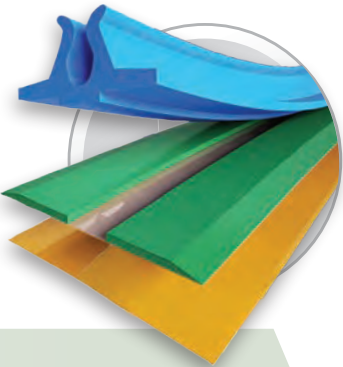
Durable and easy to skive, PINK is made with patent-protected Rosadium fiber. The strong adhesive bond provides the strength and durability for many repeat runs.



- ✓ High-quality matrix from synthetic fiber
- ✓ Rosadium fiber is easy to skive
- ✓ Strong adhesive for long runs
- ✓ Available in centered and off-center

## Channel Corrugate Matrix

This matrix was designed specifically for corrugated board. The extra-wide base reduces cracking on corrugated scores, especially when paired with our Red Soft "C" rubber. The extra-wide base also eliminates movement of the matrix on press and fishtailing.



- ✓ 20mm wide base specifically designed for corrugated board
- ✓ Works best paired with Red Soft "C" profile rubber SKU #084815
- ✓ Crushes corrugated top and bottom for improved folding without cracking
- ✓ Available in centered, off-center, and U-bend for double scores

## Original Channel Matrix

The Original Channel Matrix is perfect for Heidelberg's and flat bed diecutters. The strong steel-backed matrix provides increased rigidity for cylinder diecutting, and remains rigid even when the cutting plate flexes. Also great for short-medium runs and hand-fed presses.



- ✓ Widest range of metal based PVC matrix available on the market
- ✓ Color coded PVC plastic shoulders according to the size
- ✓ Available in centered and off-center variations
- ✓ Available with both standard and extra strong tape



**Red Soft "C" Rubber works well with Channel Corrugate Matrix.**



**We also offer a matrix cutter featured in our Hardware & Accessories section.**

# COUNTERPLATES

## STEEL COUNTERPLATES

### MatchPlate Counterplate

MatchPlate Steel Counterplates are manufactured utilizing a proprietary steel that machines easily.

Available in all Bobst sizes as well as Iberica, Sanwa, Kama, Brause, Heidelberg, and custom sizes.

- ✓ Works best with MatchPlate Bits
- ✓ Machines extremely easily on counter cutters
- ✓ Wear hardens on press to Medium-Hard
- ✓ Eliminates ghosting that phenolic counters can cause
- ✓ Faster make-ready than phenolics
- ✓ Reduces angel hair and dust



### Marco Medium-Hard Counterplate

Marco Medium-Hard Steel Counterplates are manufactured with heat treat to 35 Rockwell and a special flattening process to ensure a dead flat plate.

Available in most Bobst sizes from 102-162 large format as well as Iberica and Sanwa press sizes. Freeman also stocks 1mm and 1.5mm thick blanks for custom laser-cutting.

- ✓ German precision manufacturing and high quality steel
- ✓ Average 33-35 Rockwell
- ✓ Special flattening process ensures a flat plate every time
- ✓ 1mm, 1.5mm, & blanks available
- ✓ Pairs best with MatchPlate bits

### MatchPlate Bits

Our unique tapered single-pass MatchPlate Bits easily mill precisely tapered channels, eliminating double pass cutting and time-consuming rounding of sharp channel edges. Over 30 channel widths in stock.

- ✓ Heavy 1/4" shank solid carbide
- ✓ Unique tapered bit eliminates double pass cutting & sharp corners
- ✓ 30 sizes available from .045" to .119"



### Did you know...

The combination of our steel plates and MatchPlate Bits increases throughput, reducing machining time from 4 hours to 1 hour!

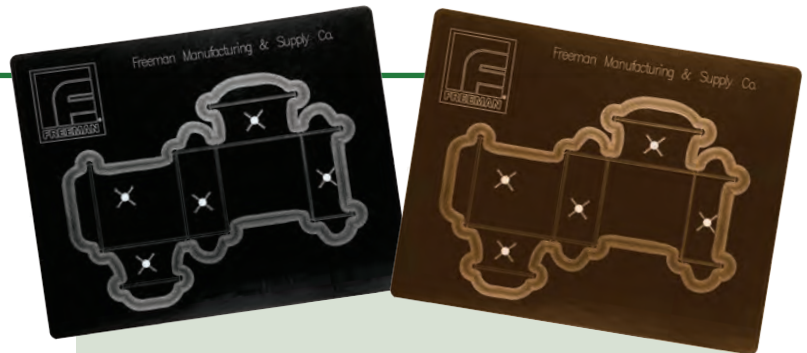
## PHENOLIC COUNTERPLATES

### Black Rigid Counterplate

This plate is manufactured to very tight tolerances allowing for consistent channel depth accuracy. It mills cleanly with our UHP bits to produce a smooth channel for precise creasing.

### Rillma Flex Counterplate

This plate is also manufactured to very tight tolerances, but with the added benefit of a flexible liner or backer. This flexible backer allows the counters to be removed without breaking and be reused. It mills cleanly with our UHP bits to produce a smooth channel for precise creasing. Available with or without PSA.



### Black Rigid

- ✓ Thicknesses from 0.4 mm - 1.3 mm (0.016" - .0512")
- ✓ 42" x 42" sheets

### Rillma Flex

- ✓ Thicknesses from 0.4 mm - 1.0 mm
- ✓ 42" x 42" sheets
- ✓ With or without PSA

### Bits for Counterplate Cutting

Freeman also stocks a full line of UHP Phenolic counter cutter bits, parting bits, and skiving bits. Please see our website, [www.DieBoard.com](http://www.DieBoard.com), for complete details and part numbers.



Check out our complete line of Counter Cutting Hardware on page 38.

# FREEMAN LOCATIONS

## Branch Locations and Public Warehouses

Freeman has strategically placed satellite locations across North America with customer service representatives ready to help. Thousands of products are stocked at these locations as well as public warehouses to reduce your shipping costs.

## Strategic & Effective Stocking

Freeman's inventory staff constantly monitors sales and stocking data across the country to properly provide the right amount of products at each location.

## Worldwide Shipping

Freeman ships orders all across the globe and has various international distributors available to supply customers with top-quality products.



### OHIO (HEADQUARTERS)

1101 Moore Road  
Avon, OH 44011  
TEL 800-321-8511  
TEL 440-934-1902  
FAX 440-934-7200

### ILLINOIS

727 N. Larch Avenue  
Elmhurst, IL 60126  
TEL 800-628-6971  
FAX 440-934-7200

### ONTARIO

3600B Laird Road Unit 8  
Mississauga, ON L5L 6A7  
TEL 800-345-9259  
FAX 586-774-1019

### QUEBEC

3475 boul Pitfield  
Montreal, QC H4S 1H3  
TEL 800-263-7699  
TEL 514-335-3530  
FAX 514-335-3225

### CALIFORNIA

5525 S. Soto St.  
Vernon, CA 90058  
TEL 800-325-2100  
FAX 440-934-7200

### KENTUCKY

917 Landis Lane  
Mt. Washington, KY 40047  
TEL 502-955-5535  
FAX 440-934-7200

### OREGON

15745 N. Lombard St., Ste. 100  
Portland, OR 97203  
TEL 800-558-0866  
FAX 262-789-5407

### TEXAS

3152 S.E. Loop 820  
Fort Worth, TX 76140  
TEL 800-792-1047  
TEL 817-551-7301  
FAX 817-568-0908

### GEORGIA

5060 N. Royal Atlanta Dr. Ste. 6  
Tucker, GA 30084  
TEL 770-493-4131  
FAX 440-934-7200

### KANSAS

5755 S. Hoover Road Bldg. #5  
Wichita, KS 67215  
TEL 800-792-1047  
FAX 817-568-0908

### NORTH CAROLINA

101 Bailey Street  
Mocksville, NC 27028  
TEL 800-321-8511  
FAX 440-934-7200

### WISCONSIN

4921 South 2nd St.  
Milwaukee, WI 53207  
TEL 800-558-0866  
TEL 262-789-9800  
FAX 262-789-5407

### MICHIGAN

27655 Groesbeck Highway  
Roseville, MI 48066  
TEL 800-345-9259  
TEL 586-774-1210  
FAX 586-774-1019

### PENNSYLVANIA

203 Enterprise Rd.  
Lititz, PA 17543  
TEL 800-631-4230  
TEL 717-653-5300  
FAX 717-653-7372

# TERMS & CONDITIONS

### Returned Goods

To save transportation charges, and facilitate handling of merchandise upon our receipt, we request that no merchandise be returned without prior written authorization.

### Damaged Goods

Merchandise given to a transportation firm is their responsibility to deliver in satisfactory condition. If merchandise is delivered damaged, the customer should note as such on freight bill and file a claim with the delivering carrier. Regulations require that hidden damage, identified upon unpacking, must be reported within ten (10) days of delivery in order to file a proper claim.

### Liability/Warranty Statement

Our products are intended for sale to industrial and commercial customers. We request that customers inspect and test our products before use and satisfy themselves as to contents and suitability. Nothing herein shall constitute a warranty, expressed or implied, including any warranty or merchantability or fitness, nor is protection from any law of patent to be inferred. All patent rights are reserved. The exclusive remedy for all proven claims is replacement of our materials and in no event shall we be liable for special, incidental, or consequential damages.

© 2021 Freeman Manufacturing & Supply Co. All Rights Reserved  
Freeman and logo designs are registered trademarks of Freeman.